

Monitoring Switch for Rapidrop Wet Alarm Valves

Product Description

Monitoring switch designed to monitor the open position of the alarm line isolation valve on Wet Alarm Valves. The monitoring switch will send an electrical signal to the alarm panel in the event that the valve has been closed. The monitoring switch is compatible with all sizes of RDAVB AF type wet alarm valves manufactured by Rapidrop Global.

Switch Technical Specification

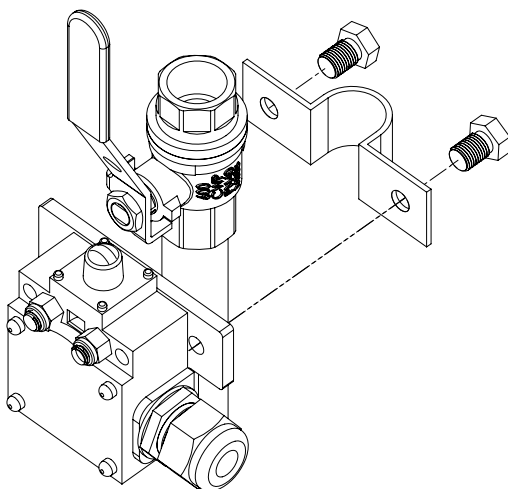
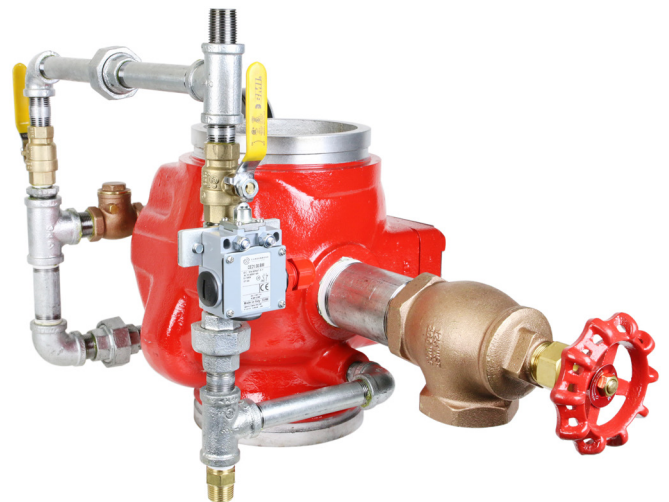
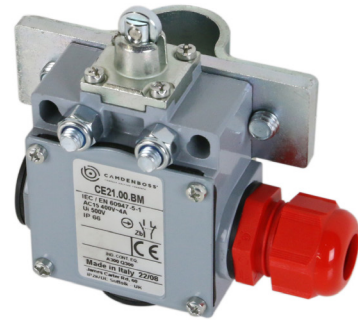
- Double SPST switch (1x NO, 1x NC)
- Current Rating 3A at 240V
- Metal Housing
- Roller Plunger
- M20 Cable Gland
- Working Temperature -25°C to +70°C
- IP66

Compatible Valves

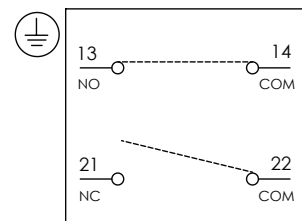
DN80, DN100, DN150 and DN200 RDAVB AF Type Wet Alarm Valves

Installation

1. Close the ball valve.
2. Position the switch directly under the ball valve and attach it to the pipe. Tighten the M8 bolts uniformly using a 13mm socket ensuring the monitored device assembly is secure.
3. Open the ball valve and check if the handle presses on the switch plunger. Readjust position of the switch if required.
4. Using a multimeter, verify correct operation of the switch.



Wiring Diagram



Wiring diagram above shows the switch with plunger fully pressed

Ordering Code

RDBLMSWITCH