



Cast Steel Swing Check Valve Class 300

Description

Rapidrop Fig. 302 is a rubber faced, flanged swing type check valve that allows water flow in one direction only. A hinged clapper remains open with water flowing in one direction, and automatically closes when flow stops preventing back flow. Removable cover allows easy access for inspection and maintenance. These valves are suitable for installation in both horizontal and vertical (with the flow upwards) pipelines

Features

- Valve according to BS1868
- End to End dimensions according to ANSI B16.10
- Eye bolt for sizes bigger than 3"

Connections

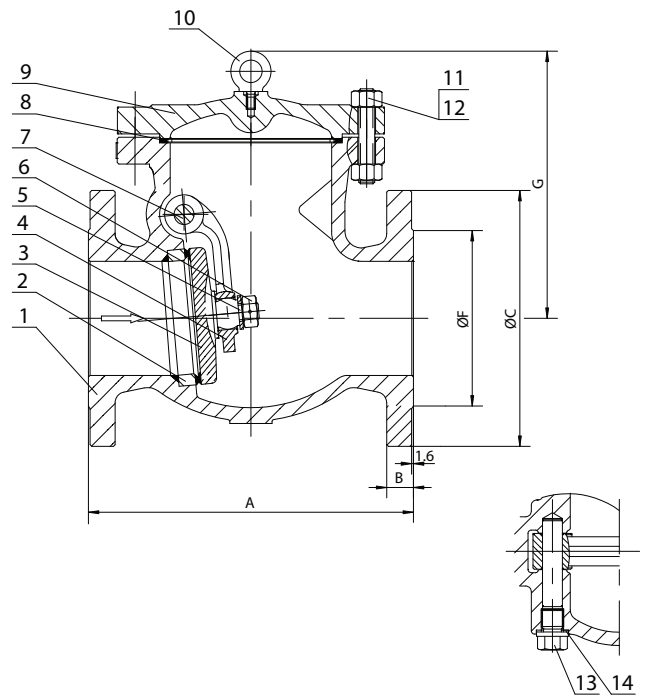
PN40 Flange as per BS EN 1092-1

Maximum Working Pressure

46bar (670psi) at 100°C (Class 300)

Material Specifications

| Part No. | Description | Material | Specification |
|----------|-------------|-----------------|------------------|
| 1 | Body | Cast Steel | ASTM A216 WCB |
| 2 | Body Ring | Carbon Steel | ASTM A105+STL |
| 3 | Disc | Carbon Steel | ASTM A105+F6 |
| 4 | Hinge | Cast Steel | ASTM A216 WCB |
| 5 | Gasket | Stainless Steel | ASTM A276-410 |
| 6 | Nut | Stainless Steel | ASTM A276-410 |
| 7 | Pin | Stainless Steel | ASTM A276-410 |
| 8 | Gasket | Spiral Wound | SS304 + Graphite |
| 9 | Bonnet | Cast Steel | ASTM A216 WCB |
| 10 | Eye Bolt | Carbon Steel | ASTM A29-1035 |
| 11 | Nut | Steel | ASTM A194-2HM |
| 12 | Bolt | Steel | ASTM A193-B7M |
| 13 | Gasket | Stainless Steel | ASTM A276-304 |
| 14 | Plug | Stainless Steel | ASTM A276-410 |



Dimensions

| Size | A | | B | C | F | G | Weight (kg) | Ordering Codes |
|-------|-----|--------|----|-----|-----|-----|-------------|----------------|
| | mm | inch | | | | | | |
| DN65 | 292 | 2 1/2" | 26 | 190 | 105 | 170 | 37 | RDCVS065PN40 |
| DN80 | 318 | 3" | 29 | 210 | 127 | 176 | 43 | RDCVS080PN40 |
| DN100 | 356 | 4" | 32 | 254 | 157 | 256 | 61 | RDCVS100PN40 |
| DN125 | 400 | 5" | 35 | 279 | 186 | 274 | 110 | RDCVS125PN40 |
| DN150 | 444 | 6" | 37 | 318 | 216 | 306 | 131 | RDCVS150PN40 |
| DN200 | 533 | 8" | 42 | 381 | 270 | 362 | 213 | RDCVS200PN40 |



Cast Steel Swing Check Valve Class 300

Straight Section of Pipe Before and After

