



Data Sheet 10.75 Issue A



High Pressure Self Regulating Landing Valve Fig.608 and Fig.608M

General Description

Rapidrop high pressure self regulating landing valves are suitable for installation on wet risers in buildings for fire fighting purposes. Self regulating landing valve allows the user to set the valve outlet pressure as desired according to the conditions of the fire protection system in which the valves are installed. The constant set outlet pressure of the valve protects the fireman from inconsistent hose pressure in a fire protection system. Valve is manufactured in accordance with BS 5041-1. The landing valves have DN65 (2 1/2") threaded or flange inlets; outlet hose connection complies with BS336 standard and is equipped with blanking cap and a chain. Valves are maintenance free and all components are corrosion resistant or coated with a thermally applied fusion-bonded epoxy.

Working Pressure

Max. working pressure 20 bar (290 psi)

Max. test pressure 30 bar (435 psi)

Connections

Inlet

Fig.608

DN65 (2 1/2") PN25 Flange

Fig.608M

DN65 (2 1/2") BSPT male thread

Outlet

DN65 (2 1/2") female instantaneous to BS336

Standards

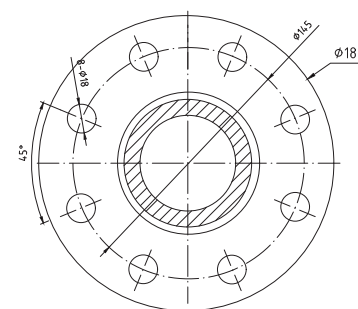
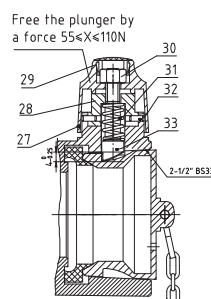
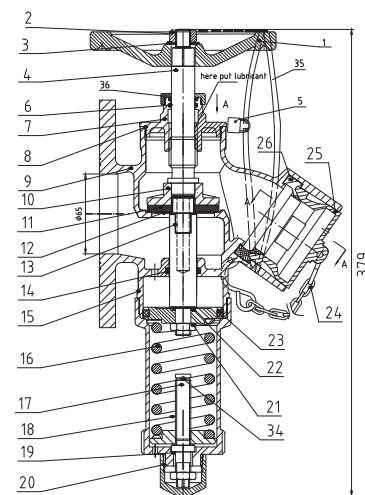
BS 5041-1

Approvals

LPCB Certificate

Material Specification

Item No.	Description	Materials
1	Hand Wheel	Gray Cast Iron 180
2	Nut	Stainless Steel 304
3	Gasket	6063
4	Stem	Brass CZ121
5	Lock	
6	O-Ring	NBR
7	Bonnet	Brass CZ122
8	O-Ring	NBR
9	Valve Body	LG2 Gunmetal
10	Disk	Brass CZ122
11	Seal	Rubber
12	Washer	Brass CZ122
13	Stem	Brass CZ121
14	Seal	NBR
15	Copper Block	LG2 Gunmetal



Item No.	Description	Materials
16	Spring	BS970: 735A50
17	Screw	Brass CZ121
18	Spring Seat	Brass CZ122
19	Locknut	Brass CZ121
20	Glandnut	Brass CZ122
21	Pistons	Brass CZ122
22	O-Ring	NBR
23	Seal	NBR
24	Chain	Stainless Steel 304
25	Cap	LM25
26	Seal	Natural Rubber
27	Lug Pull	Brass CZ122
28	Handle Seat	Brass CZ122
29	Cover	PA66
30	Nut	BS-1C22
31	Spring	Stainless Steel 304
32	Spring pin	Steel
33	Release Bolt	Brass CZ122
34	Pin	Steel
35	Leather Chain	Leather
36	Gland Nut	Brass CZ121