



Pressure Switch

Model: 1381 and 1381V

Description

Type 1381 and 1381V pressure switches are used for monitoring pressure to sound an alarm, operate a warning light or cut off an electrical supply as soon as the pressure rises to the set point. Each unit contains one double pole switch (common, normally open and normally closed connections) activated by a diaphragm. 'Standard Pressure Switch Wiring Instructions' data sheet supplied with each unit.

Pressure Range

Pressure Range	Hysteresis Typical
-1 to +1 bar	0.04 bar
0.2 to 4 bar	0.07 bar
0.5 to 11 bar	0.3 bar
0.7 to 14 bar	0.4 bar
2 to 28 bar	0.6 bar
2 to 42 bar	0.8 bar

Temperature

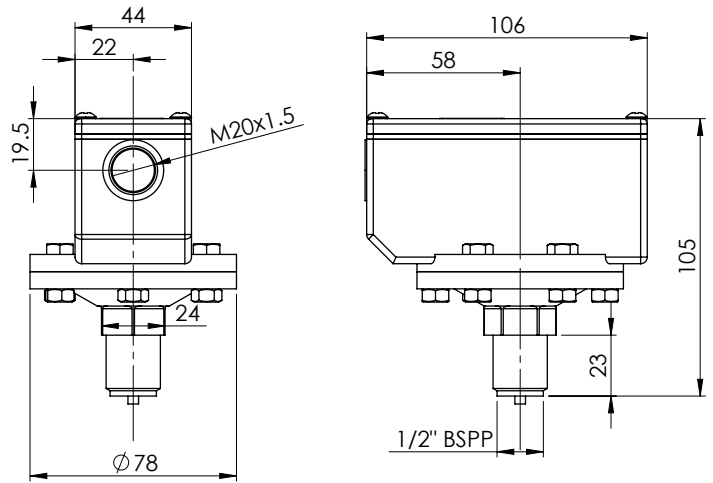
Temperature Range -10°C to +85°C

Approvals

LPCB, CE marked to EN 60730-1 (low voltage directive)

Material Specification

Part Name	Material
Type 1381 (Non Variable)	Factory set @ 0.8 Bar rising, Resets @ 0.4 Bar.
Type 1381V (Variable)	Factory set @ 5 Bar rising, Resets @ 0.4 Bar.
Accuracy	± 2% of range
Enclosure	IP65
Weight	0.9 Kg
Diaphragm	Beryllium Copper
Seal	Glass Filled PTFE
Base / Connection	Brass
Housing	Aluminium/Zinc diecast
Cover	Glass filled nylon with nitrile seal
Contact Rating	10A @ 250V AC 1A @ 30V DC



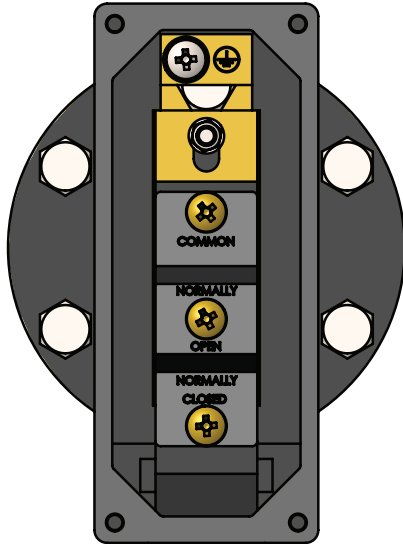
Manufactured by Bailey & Mackey who holds the LPCB and CE certificates

DS: 2.02
Issue D
08/03/2022
© 2022 Rapidrop

Rapidrop Global Ltd
T: +44 (0) 1733 847 510 F: +44 (0) 1733 553 958
e: rapidrop@rapidrop.com
w: www.rapidrop.com

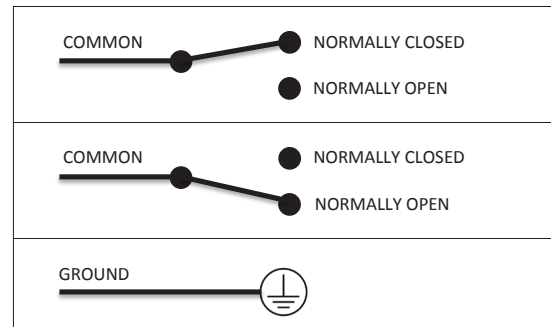
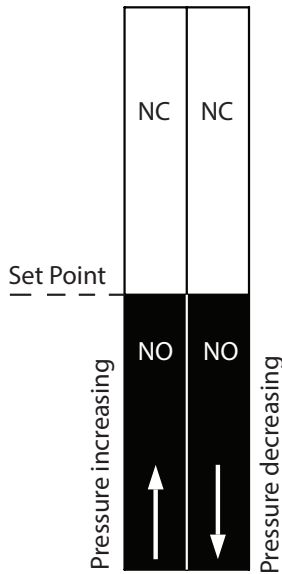
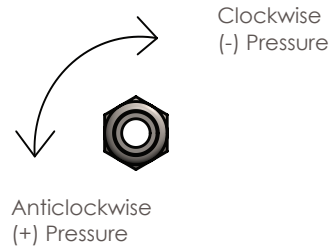
Pressure Switch Model: 1381 and 1381V

Non-Variable Pressure Switch 1381



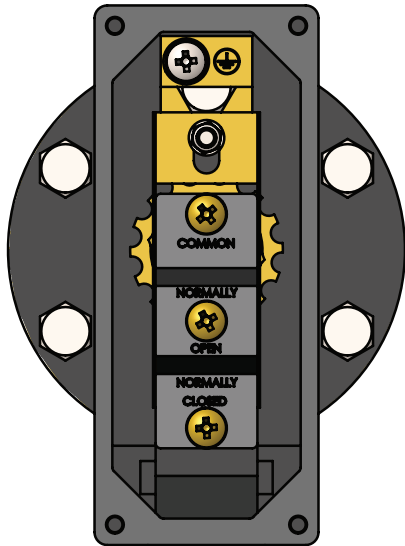
Set point adjustment M3 Nylon Nut (5.5 Socket)

- Remove the four switch lid screws
- Remove the red electrical cover
- Tighten the nylon nut clockwise to reduce the pressure set point
- Loosen the nylon nut anticlockwise to increase the pressure set point
- When the set point is achieved replace the red cover and re-fit the lid
- Please write on the label the new set point and the re-set point



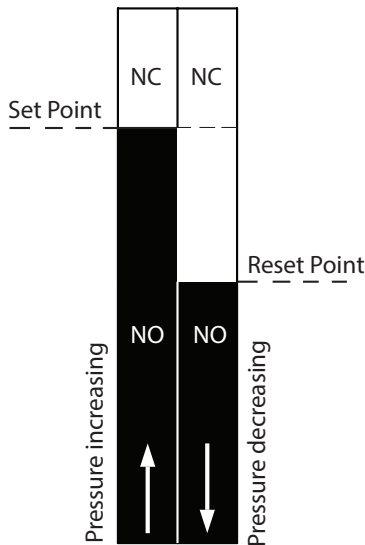
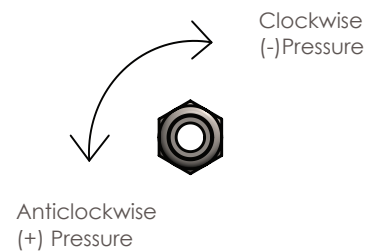
Pressure Switch Model: 1381 and 1381V

Variable Pressure Switch 1381V



Set point adjustment M3 Nylon Nut (5.5 Socket)

- Remove the four switch lid screws
- Remove the red electrical cover
- Tighten the nylon nut clockwise to reduce the pressure set point
- Loosen the nylon nut anticlockwise to increase the pressure set point



Reset point adjustment

- Set the set point as above and then set the reset point as follows:
- Rotate the adjusting gear clockwise to reduce the pressure differential
 - Rotate the adjusting gear anticlockwise to increase the pressure differential
 - Always do one final check as sometimes the set point can move slightly when moving the wheel
 - When the set point achieved replace the red cover and re-fit the lid
 - Please write on the label the new set point and the re-set point

