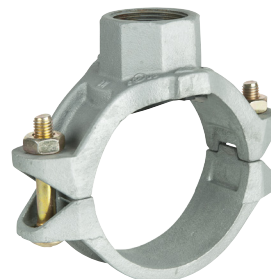


Teu mecanic filetat Model 3J



Specificatii material

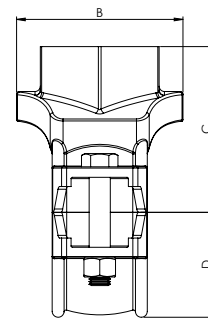
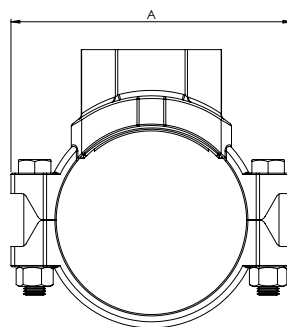
- Corp – Fier ductil, ASTM A536
- Suruburi si piulite – Otel moale zincat, ASTM A183, ISO898

Specificatii garnitura

- EPDM, ASTM D2000

Raza de temperatura -34°C to +110°C (-30°C to +230°F).

Recomandat pentru aplicatii cu apa fierbinte in raza de temperaturi recomandata precum si pentru o varietate de acizi diluati, aer fara uleiuri si alte aplicatii cu elemente chimice. Nerecomandat pentru aplicatii petroliere.



Finisaj

- Vopsti rosu (RAL 3000)
- Galvanizat

Cod Model (Vopsti Rosu)	Cod Model (Galvanizat)	Dimensiune nominala mm/in	D. Ext. Teava mm/in	Presiune maxima de lucru bar/psi				Diametru Carotaj mm/in	Dimensiuni				Surub Piulita mm
				UL	FM	VdS	CNBOP		A mm/in	B mm/in	C mm/in	D mm/in	
RD3J060025	RD3J060025G	50 x 25 2 x 1	60.3 x 33.7 2.375 x 1.315	20.7 300	20.7 300	16 232	20 290	38 1.50	116 4.57	68 2.68	60 2.36	39 1.54	3/8 x 55 M10X57
RD3J060032	RD3J060032G	50 x 32 2 x 1 1/4	60.3 x 42.4 2.375 x 1.660	20.7 300	20.7 300	16 232	20 290	45 1.75	116 4.57	76 2.99	65 2.56	39 1.54	3/8 x 55 M10X57
RD3J060040	RD3J060040G	50 x 40 2 x 1 1/2	60.3 x 48.3 2.375 x 1.900	20.7 300	20.7 300	16 232	-	45 1.75	116 4.57	76 2.99	65 2.56	39 1.54	3/8 x 55 M10X57
RD3J076032	RD3J076032G	65 x 32 76.1 x 1 1/4	76.1 x 42.4 3.000 x 1.660	20.7 300	20.7 300	16 232	20 290	51 2.00	137 5.39	84.5 3.33	75 3.05	49.5 1.95	1/2 x 70 M12X70
RD3J076040	RD3J076040G	65 x 40 76.1 x 1 1/2	76.1 x 48.3 3.000 x 1.900	20.7 300	20.7 300	16 232	20 290	51 2.00	137 5.39	84.5 3.33	61.5 2.42	49.5 1.95	1/2 x 70 M12X70
RD3J089025	RD3J089025G	80 x 25 3 x 1	88.9 x 33.7 3.500 x 1.315	20.7 300	20.7 300	16 232	20 290	38 1.50	152 5.98	72.5 2.85	80 3.15	56.5 2.22	1/2 x 75 M12X76
RD3J089032	RD3J089032G	80 x 32 3 x 1 1/4	88.9 x 42.4 3.500 x 1.660	20.7 300	20.7 300	16 232	-	51 2.00	152 5.98	85.5 3.37	80 3.15	56.5 2.22	1/2 x 75 M12X76
RD3J089040	RD3J089040G	80 x 40 3 x 1 1/2	88.9 x 48.3 3.500 x 1.900	20.7 300	20.7 300	16 232	20 290	51 2.00	152 5.98	85.5 3.37	80 3.15	56.5 2.22	1/2 x 75 M12X76
RD3J089050	RD3J089050G	80 x 50 3 x 2	88.9 x 60.3 3.500 x 2.375	20.7 300	20.7 300	16 232	20 290	64 2.50	152 5.98	98 3.86	80 3.15	56.5 2.22	1/2 x 75 M12X76
RD3J114025	RD3J114025G	100 x 25 4 x 1	114.3 x 33.7 4.500 x 1.315	20.7 300	20.7 300	16 232	20 290	38 1.50	188 7.40	78.5 3.09	93 3.66	70 2.76	1/2 x 75 M12X76
RD3J114032	RD3J114032G	100 x 32 4 x 1 1/4	114.3 x 42.4 4.500 x 1.660	20.7 300	20.7 300	16 232	20 290	51 2.00	188 7.40	89 3.50	95 3.74	70 2.76	1/2 x 75 M12X76



Fisa Tehnica 8.61

Revizia B



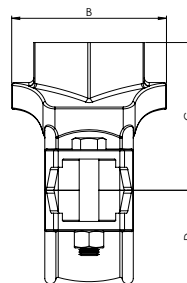
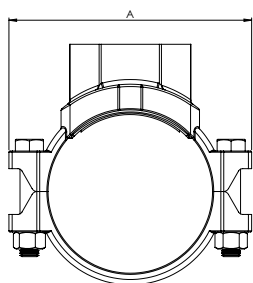
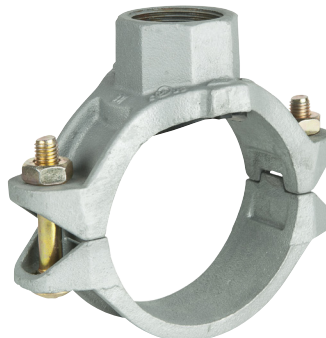
063-UWB-0273



G412018

Teu mecanic filetat

Model 3J



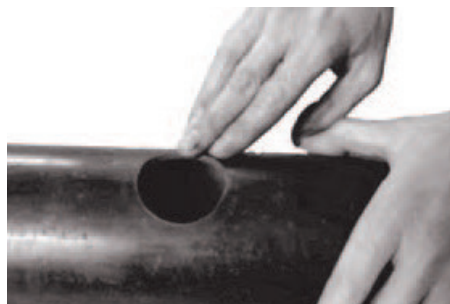
Cod Model (Vopsti Rosu)	Cod Model (Galvanizat)	Dimensiune nominala mm/in	D. Ext. Teava mm/in	Presiune maxima de lucru bar/psi				Diametru Carotaj mm/in	Dimensiuni				Surub Piulita mm
				UL	FM	VdS	CNBOP		A mm/in	B mm/in	C mm/in	D mm/in	
RD3J114040	RD3J114040G	100 × 40 4 × 1½	114.3 × 48.3 4.500 × 1.900	20.7 300	20.7 300	16 232	-	51 2.00	188 7.40	89 3.50	97 3.82	70 2.76	1/2 × 75 M10X76
RD3J114050	RD3J114050G	100 × 50 4 × 2	114.3 × 60.3 4.500 × 2.375	20.7 300	20.7 300	16 232	-	64 2.50	188 7.40	104.5 4.11	100 3.94	70 2.76	1/2 × 75 M10X76
RD3J114065	RD3J114065G	100 × 65 4 × 2½	114.3 × 76.1 4.500 × 3.000	20.7 300	20.7 300	16 232	20 290	70 2.75	188 7.40	104.5 4.11	102 4.02	70 2.76	1/2 × 75 M10X76
RD3J114080	RD3J114080G	100 × 80 4 × 3	114.3 × 88.9 4.500 × 3.500	20.7 300	20.7 300	16 232	20 290	89 3.50	188 7.40	128 5.039	102 4.02	70 2.76	1/2 × 75 M10X76
RD3J139042	RD3J139042G	125 × 32 139.7 × 1¼	139.7 × 42.4 5.500 × 1.660	20.7 300	20.7 300	16 232	20 290	51 2.00	221.5 8.72	95 3.74	112 4.41	84 3.31	5/8 × 105 M16X105
RD3J168032	RD3J168032G	150 × 32 6 × 1¼	168.3 × 42.4 6.500 × 1.660	20.7 300	20.7 300	16 232	20 290	51 2.00	247 9.72	95 3.74	122 4.80	98.5 3.88	5/8 × 105 M16X105
RD3J168040	RD3J168040G	150 × 40 6 × 1½	168.3 × 48.3 6.500 × 1.900	20.7 300	20.7 300	16 232	20 290	51 2.00	247 9.72	95 3.74	122 4.80	98.5 3.88	5/8 × 105 M16X105
RD3J168050	RD3J168050G	150 × 50 6 × 2	168.3 × 60.3 6.625 × 2.375	20.7 300	20.7 300	16 232	-	64 2.50	247 9.72	112.5 4.43	132 5.20	98.5 3.88	5/8 × 105 M16X105
RD3J168065	RD3J168065G	150 × 65 6 × 2½	168.3 × 76.7 6.625 × 3.000	20.7 300	20.7 300	16 232	20 290	70 2.75	247 9.72	112.5 4.43	132 5.20	98.5 3.88	5/8 × 105 M16X105
RD3J168080G	RD3J168080G	150 × 80 6 × 3	168.3 × 88.9 6.625 × 3.500	20.7 300	20.7 300	16 232	20 290	89 3.50	247 9.72	132 5.20	140 5.51	98.5 3.88	5/8 × 105 M16X105
RD3J219050	RD3J219050G	200 × 50 8 × 2	219.1 × 60.3 8.625 × 2.375	20.7 300	20.7 300	16 232	20 290	64 2.50	320 12.60	117 4.61	160 6.30	125 4.92	3/4 × 115 M20X115
RD3J219065	RD3J219065G	200 × 65 8 × 2½	219.1 × 76.1 8.625 × 3.000	20.7 300	20.7 300	16 232	20 290	70 2.75	320 12.60	118 4.65	160 6.30	125 4.92	3/4 × 115 M20X115
RD3J219080	RD3J219080G	200 × 80 8 × 3	219.1 × 88.9 8.625 × 3.500	20.7 300	20.7 300	16 232	20 290	89 3.50	320 12.60	136.5 5.37	160 6.30	125 4.92	3/4 × 115 M20X115

FT: 8.61
Revizia B
01/03/2022
© 2022 Rapidrop

Rapidrop Global Ltd
T: +44 (0) 1733 847 510 F: +44 (0) 1733 553 958
e: rapidrop@rapidrop.com
w: www.rapidrop.com

Page 2 of 3

Teu mecanic filetat Model 3J



1. Pregatirea conductei

Curatati o zona de cel putin 16mm de la gaura din conducta si inspectati aria vizual pentru defecte ce ar putea prevenii etansarea. Nu dati gauri pe linia de sudura.



2. Debavurati zona

Pentru a proteja garnitura si a evita scurgeri de apa, este recomandata debaurarea gaurii din conducta.



3. Instalarea garniturii

Inserati garnitura in gaura din carcasa. Aliniati orificiul peste gaura din conducta si asigurativa ca se muleaza peste aceasta.



4. Aliniere

Aliniati cupla in jurul conductei, inserati suruburile si strangeti piulitele.



5. Strangerea piulitei

Strangeti piulitele alternativ si aplicati forta torque recomandata



6. Asamblare finalizata

Nu ar trebui sa fie goluri vizibile intre partea de sus si partea de jos a instalatiei.

Atentie

Aplicati doar forta troque recomandata pentru o obtine performanta maxima la strangere.

- Strangerea cu o forta mai mare decat cea recomandata poate cauza daune surubului si/sau carcasei ce ar duce la separarea forzata a conductelor.
- Strangerea cu o forta mai mica decat cea recomandata poate duce la o eficienta redusa in refinerea presiunii, scurgeri de apa si separarea forzata a conductelor. Aceste efecte pot duce la accidente sau daune materiale.

Fora torque la strangerea surubului

Marime surub inch	Fora torque recomandata	
	Lbs-Ft.	N.m
3/8	30-45	40-60
1/2	80-100	110-135
5/8	100-130	135-175
3/4	-	-
7/8	-	-