



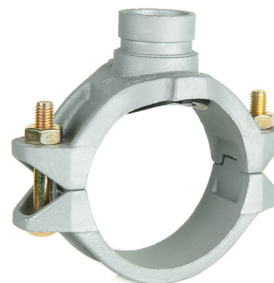
Fisa Tehnica 8.59

Revizia B



Teu mecanic canelat

Model 3G



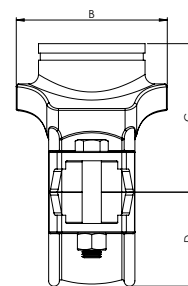
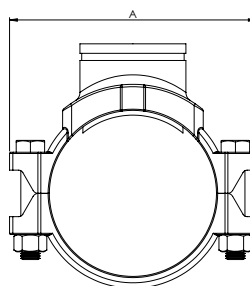
Specificatii material

- Corp – Fonta Ductila, ASTM A536
- Suruburi si piulite – Otel Galvanizat, ASTM A183, ISO898

Specificatii garnitura

- EPDM, ASTM D2000

Interval de temperatura -34°C to +110°C (-30°F to +230°F).
Recomandat pentru aplicatii de alimentare cu apa calda in intervalul de temperatura recomandat, precum si pentru o varietate de acizi diluati, aer fara uleiuri si alte aplicatii chimice.
Nerecomandat pentru aplicatii petroliere.



Finisaj

- Vopsit in rosu (RAL 3000)
- Galvanizat

Cod Produs (Vopsit rosu)	Cod produs (Galvanizat)	Dimensiune nominala mm/in	D. ext. Teava mm/in	Presiune maxima de lucru bar/psi				Diametru Carotaj	Dimensiuni				Surub Piulita mm
				UL	FM	VdS	CNBOP		A mm/in	B mm/in	C mm/in	D mm/in	
RD3G060042	RD3G060042G	50 x 32 2 x 1¼	60.3 x 42.4 2.375 x 1.660	20.7 300	20.7 300	16 232	20 290	45 1.75	116 4.57	76 2.99	69.5 2.74	39 1.54	3/8 x 55 M10X57
RD3G060048	RD3G060048G	50 x 40 2 x 1½	60.3 x 48.3 2.375 x 1.900	20.7 300	20.7 300	16 232	20 290	45 1.75	116 4.57	76 2.99	69.5 2.74	39 1.54	3/8 x 55 M10X57
RD3G076042	RD3G076042G	65 x 32 2½ x 1¼	76.1 x 42.4 3.000 x 1.660	20.7 300	20.7 300	16 232	20 290	51 2.00	137 5.39	84.5 3.33	78 3.07	49.5 1.95	1/2 x 70 M12X70
RD3G076048	RD3G076048G	65 x 40 2½ x 1½	76.1 x 48.3 3.000 x 1.900	20.7 300	20.7 300	16 232	20 290	51 2.00	137 5.39	84.5 3.33	78 3.07	49.5 1.95	1/2 x 70 M12X70
RD3G089042	RD3G089042G	80 x 32 3 x 1¼	88.9 x 42.4 3.500 x 1.660	20.7 300	20.7 300	16 232	20 290	51 2.00	152 5.98	85.5 3.37	84.5 3.33	56.5 2.22	1/2 x 75 M12X76
RD3G089048	RD3G089048G	80 x 40 3 x 1½	88.9 x 48.3 3.500 x 1.900	20.7 300	20.7 300	16 232	20 290	51 2.00	152 5.98	85.5 3.37	84.5 3.33	56.5 2.22	1/2 x 75 M12X76
RD3G089060	RD3G089060G	80 x 50 3 x 2	88.9 x 60.3 3.500 x 2.375	20.7 300	20.7 300	16 232	20 290	64 2.50	152 5.98	98 3.86	84.5 3.33	56.5 2.22	1/2 x 75 M12X76
RD3G114042	RD3G114042G	100 x 32 4 x 1¼	114.3 x 42.4 4.500 x 1.660	20.7 300	20.7 300	16 232	20 290	51 2.00	188 7.40	89 3.50	102 4.02	70 2.76	1/2 x 75 M12X76
RD3G114048	RD3G114048G	100 x 40 4 x 1½	114.3 x 48.3 4.500 x 1.900	20.7 300	20.7 300	16 232	20 290	51 2.00	188 7.40	89 3.50	102 4.02	70 2.76	1/2 x 75 M12X76
RD3G114060	RD3G114060G	100 x 50 4 x 2	114.3 x 60.3 4.500 x 2.375	20.7 300	20.7 300	16 232	20 290	64 2.50	188 7.40	104.5 4.11	102 4.02	70 2.76	1/2 x 75 M12X76
RD3G114076	RD3G114076G	100 x 65 4 x 2½	114.3 x 76.1 4.500 x 3.000	20.7 300	20.7 300	16 232	20 290	70 2.75	188 7.40	104.5 4.11	102 4.02	70 2.76	1/2 x 75 M12X76
RD3G114089	RD3G114089G	100 x 80 4 x 3	114.3 x 88.9 4.500 x 3.500	20.7 300	20.7 300	16 232	20 290	89 3.5	188 7.40	125 5.03	102 4.02	70 2.76	1/2 x 75 M12X76

DS: 8.59
Revizia B
01/03/2022
© 2022 Rapidrop

Rapidrop Global Ltd
T: +44 (0) 1733 847 510 F: +44 (0) 1733 553 958
e: rapidrop@rapidrop.com
w: www.rapidrop.com



Fisa Tehnica 8.59

Revizia B



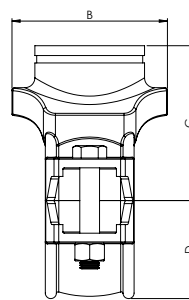
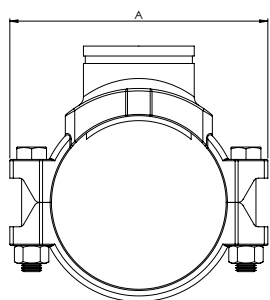
063-UWB-0273



G412018

Teu mecanic canelat

Model 3G



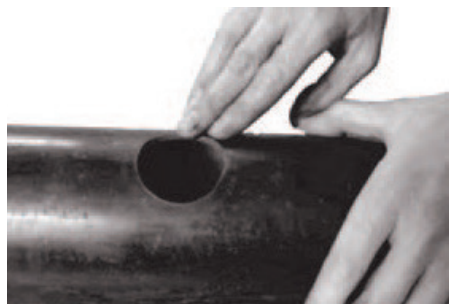
Cod Produs (Vopsit rosu)	Cod produs (Galvanizat)	Dimensiune nominala mm/in	D. ext. Teava mm/in	Presiune maxima de lucru bar/psi				Diametru Carotaj	Dimensiuni				Surub Piulita mm
				UL	FM	VdS	CNBOP		A mm/in	B mm/in	C mm/in	D mm/in	
RD3G139060	RD3G139060G	125 x 50 5 x 2	139.7 x 60.3 5.500 x 2.375	20.7 300	20.7 300	16 232	20 290	64 2.5	221.5 8.72	112.5 4.43	118 4.65	84 3.31	5/8 x 85 M16X85
RD3G139076	RD3G139076G	125 x 65 5 x 2½	139.7 x 76.1 5.500 x 3.000	20.7 300	20.7 300	16 232	20 290	70 2.75	221.5 8.72	112.5 4.43	118 4.65	84 3.31	5/8 x 85 M16X85
RD3G139089	RD3G139089G	125 x 80 5 x 3	139.7 x 88.9 5.500 x 3.500	20.7 300	20.7 300	16 232	20 290	89 3.5	221.5 8.72	132 5.20	118 4.65	84 3.31	5/8 x 85 M16X85
RD3G168042	RD3G168042G	150 x 32 6 x 1¼	168.3 x 42.4 6.500 x 1.660	20.7 300	20.7 300	-	20 290	51 2.00	240 9.45	92.5 3.64	126 4.96	96.5 3.80	5/8 x 105 M16X108
RD3G168048	RD3G168048G	150 x 40 6 x 1½	168.3 x 48.3 6.500 x 1.900	20.7 300	20.7 300	16 232	20 290	51 2.00	247 9.72	95 3.74	128 5.04	98.5 3.88	5/8 x 105 M16X108
RD3G168060	RD3G168060G	150 x 50 6 x 2	168.3 x 60.3 6.625 x 2.375	20.7 300	20.7 300	16 232	20 290	64 2.5	247 9.72	114 4.49	134 5.28	98.5 3.88	5/8 x 105 M16X108
RD3G168076	RD3G168076G	150 x 65 6 x 2½	168.3 x 76.1 6.625 x 3.000	20.7 300	20.7 300	16 232	20 290	70 2.75	247 9.72	112.5 4.43	135 5.32	98.5 3.88	5/8 x 105 M16X108
RD3G168089	RD3G168089G	150 x 80 6 x 3	168.3 x 88.9 6.625 x 3.500	20.7 300	20.7 300	16 232	20 290	89 3.50	247 9.72	160 6.30	141 5.55	98.5 3.88	5/8 x 105 M16X108
RD3G168114	RD3G168114G	150 x 100 6 x 4	168.3 x 114.3 6.625 x 4.500	20.7 300	20.7 300	16 232	20 290	114 4.50	247 9.72	156.5 6.16	138 5.43	98.5 3.88	5/8 x 105 M16X108
RD3G219076	RD3G219076G	200 x 65 8 x 2½	219.1 x 76.1 8.625 x 3.000	20.7 300	20.7 300	16 232	20 290	70 2.75	320 12.60	118 4.65	158 6.22	125 4.92	3/4 x 115 M20X115
RD3G219089	RD3G219089G	200 x 80 8 x 3	219.1 x 88.9 8.625 x 3.500	20.7 300	20.7 300	16 232	20 290	89 3.50	320 12.60	136.5 5.37	161 6.34	125 4.92	3/4 x 115 M20X115
RD3G219114	RD3G219114G	200 x 100 8 x 4	219.1 x 114.3 8.625 x 4.500	20.7 300	20.7 300	16 232	20 290	114 4.50	320 12.60	162 6.38	161 6.34	125 4.92	3/4 x 115 M20X115

DS: 8.59
Revizia B
01/03/2022
© 2022 Rapidrop

Rapidrop Global Ltd
T: +44 (0) 1733 847 510 F: +44 (0) 1733 553 958
e: rapidrop@rapidrop.com
w: www.rapidrop.com

Teu mecanic canelat

Model 3G



1. Pregatirea conductei

Curatati suprafata de etansare in contact cu garniture (min 16mm) si asigurati-va ca nu exista defecte care ar putea impiedica o etansare perfecta. Nu realizati carotarea pe linia de sudura a tevii.



2. Debavurati zona

Orice impuritati existente in urma carotarii trebuie indepartate inaintea asamblarii fittingului, pentru a proteja garniture si a evita posibile scurgeri sau pierderi de presiune.



3. Instalarea garniturii

Pozitionati garnitura in interiorul teului mecanic in mod corespunzator. Aliniati teul mecanic si asigurati-va ca acesta este pozitionat pe teava in asa fel incat gulerul din jurul garniturii sa intre in orificiul tevii.



4. Aliniere

Pozitionati cealalta jumatatea de teu mecanic peste teava, introduceti suruburile si strangeti piulitele manual.



5. Strangerea piulitei

Strangeti piulitele alternativ si aplicati cuplul de strangere recomandat in tabel.



6. Asamblare finalizata

Ar trebui sa existe o distanta egala intre cele doua componente ale teului mecanic, vizibila pe ambele parti de strangere.

Atentie

Pentru obtinerea performantei optime, este necesara strangerea corespunzatoare a suruburilor, conform prescriptiilor din tabel.

- Strangerea excesiva poate cauza daune surubului si/sau cuplajului, rezultand o posibila deconectare a tevilor.
- Strangerea insuficienta poate cauza pierderi de presiune, scurgeri sau o posibila deconectare a tevilor. Aceste efecte pot duce la daune materiale deosebite si/sau accidente grave.

Cuplu Specificat Surub Surub ANSI

Dim. Surub Inch	Cuplu Strangere Surub	
	Lbs-Ft.	N.m
3/8	30-45	40-60
1/2	80-100	110-135
5/8	100-130	135-175
3/4	-	-
7/8	-	-