



Mechanical Tee Grooved Outlet Model 3G



Material Specification

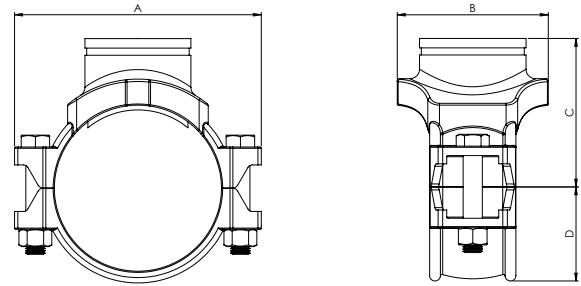
- Body - Ductile Iron, ASTM A536
- Bolts and nuts - Mild steel Zinc Plated, ASTM A183, ISO898

Gasket Specification

- EPDM, ASTM D2000

Temperature range -34°C to +110°C (-30°C to +230°F).

Recommended for hot water service within specified temperature range plus a variety of diluted acids, oil free air and many chemical services. Not recommended for petroleum service.

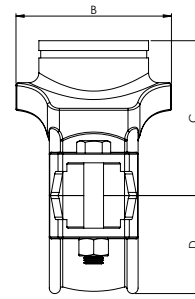
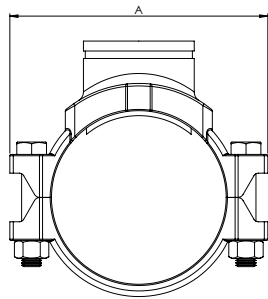
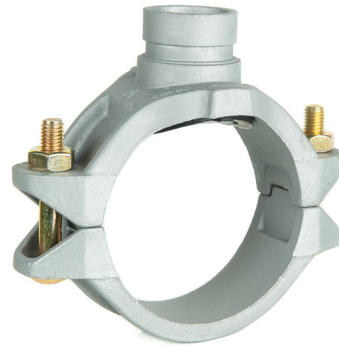


Finish

- Red painted (RAL 3000)
- Galvanised

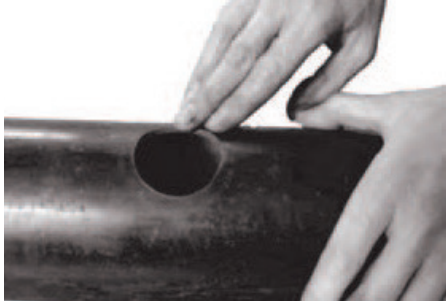
Model Number (Red Painted)	Model Number (Galvanised)	Nominal Size mm/in	Pipe O.D mm/in	Working Pressure bar/psi				Hole Dia mm/in	Dimensions				Bolt Size No.-Size mm
				UL	FM	VdS	CNBOP		A mm/in	B mm/in	C mm/in	D mm/in	
RD3G060042	RD3G060042G	50 x 32 2 x 1¼	60.3 x 42.4 2.375 x 1.660	20.7 300	20.7 300	16 232	20 290	45 1.75	116 4.57	76 2.99	69.5 2.74	39 1.54	3/8 x 55 M10X57
RD3G060048	RD3G060048G	50 x 40 2 x 1½	60.3 x 48.3 2.375 x 1.900	20.7 300	20.7 300	16 232	20 290	45 1.75	116 4.57	76 2.99	69.5 2.74	39 1.54	3/8 x 55 M10X57
RD3G076042	RD3G076042G	65 x 32 2½ x 1¼	76.1 x 42.4 3.000 x 1.660	20.7 300	20.7 300	16 232	20 290	51 2.00	137 5.39	84.5 3.33	78 3.07	49.5 1.95	1/2 x 70 M12X70
RD3G076048	RD3G076048G	65 x 40 2½ x 1½	76.1 x 48.3 3.000 x 1.900	20.7 300	20.7 300	16 232	20 290	51 2.00	137 5.39	84.5 3.33	78 3.07	49.5 1.95	1/2 x 70 M12X70
RD3G089042	RD3G089042G	80 x 32 3 x 1¼	88.9 x 42.4 3.500 x 1.660	20.7 300	20.7 300	16 232	20 290	51 2.00	152 5.98	85.5 3.37	84.5 3.33	56.5 2.22	1/2 x 75 M12X76
RD3G089048	RD3G089048G	80 x 40 3 x 1½	88.9 x 48.3 3.500 x 1.900	20.7 300	20.7 300	16 232	20 290	51 2.00	152 5.98	85.5 3.37	84.5 3.33	56.5 2.22	1/2 x 75 M12X76
RD3G089060	RD3G089060G	80 x 50 3 x 2	88.9 x 60.3 3.500 x 2.375	20.7 300	20.7 300	16 232	20 290	64 2.50	152 5.98	98 3.86	84.5 3.33	56.5 2.22	1/2 x 75 M12X76
RD3G114042	RD3G114042G	100 x 32 4 x 1¼	114.3 x 42.4 4.500 x 1.660	20.7 300	20.7 300	16 232	20 290	51 2.00	188 7.40	89 3.50	102 4.02	70 2.76	1/2 x 75 M12X76
RD3G114048	RD3G114048G	100 x 40 4 x 1½	114.3 x 48.3 4.500 x 1.900	20.7 300	20.7 300	16 232	20 290	51 2.00	188 7.40	89 3.50	102 4.02	70 2.76	1/2 x 75 M12X76
RD3G114060	RD3G114060G	100 x 50 4 x 2	114.3 x 60.3 4.500 x 2.375	20.7 300	20.7 300	16 232	20 290	64 2.50	188 7.40	104.5 4.11	102 4.02	70 2.76	1/2 x 75 M12X76
RD3G114076	RD3G114076G	100 x 65 4 x 2½	114.3 x 76.1 4.500 x 3.000	20.7 300	20.7 300	16 232	20 290	70 2.75	188 7.40	104.5 4.11	102 4.02	70 2.76	1/2 x 75 M12X76
RD3G114089	RD3G114089G	100 x 80 4 x 3	114.3 x 88.9 4.500 x 3.500	20.7 300	20.7 300	16 232	20 290	89 3.5	188 7.40	125 5.03	102 4.02	70 2.76	1/2 x 75 M12X76

Mechanical Tee Grooved Outlet Model 3G



Model Number (Red Painted)	Model Number (Galvanised)	Nominal Size mm/in	Pipe O.D mm/in	Working Pressure bar/psi				Hole Dia mm/in	Dimensions				Bolt Size No.-Size mm
				UL	FM	VdS	CNBOP		A mm/in	B mm/in	C mm/in	D mm/in	
RD3G139060	RD3G139060G	125 × 50 5 × 2	139.7 × 60.3 5.500 × 2.375	20.7 300	20.7 300	16 232	20 290	64 2.5	221.5 8.72	112.5 4.43	118 4.65	84 3.31	5/8 × 85 M16X85
RD3G139076	RD3G139076G	125 × 65 5 × 2½	139.7 × 76.1 5.500 × 3.000	20.7 300	20.7 300	16 232	20 290	70 2.75	221.5 8.72	112.5 4.43	118 4.65	84 3.31	5/8 × 85 M16X85
RD3G139089	RD3G139089G	125 × 80 5 × 3	139.7 × 88.9 5.500 × 3.500	20.7 300	20.7 300	16 232	20 290	89 3.5	221.5 8.72	132 5.20	118 4.65	84 3.31	5/8 × 85 M16X85
RD3G168042	RD3G168042G	150 × 32 6 × 1¼	168.3 × 42.4 6.500 × 1.660	20.7 300	20.7 300	-	20 290	51 2.00	240 9.45	92.5 3.64	126 4.96	96.5 3.80	5/8 × 105 M16X108
RD3G168048	RD3G168048G	150 × 40 6 × 1½	168.3 × 48.3 6.500 × 1.900	20.7 300	20.7 300	16 232	20 290	51 2.00	247 9.72	95 3.74	128 5.04	98.5 3.88	5/8 × 105 M16X108
RD3G168060	RD3G168060G	150 × 50 6 × 2	168.3 × 60.3 6.625 × 2.375	20.7 300	20.7 300	16 232	20 290	64 2.5	247 9.72	114 4.49	134 5.28	98.5 3.88	5/8 × 105 M16X108
RD3G168076	RD3G168076G	150 × 65 6 × 2½	168.3 × 76.1 6.625 × 3.000	20.7 300	20.7 300	16 232	20 290	70 2.75	247 9.72	112.5 4.43	135 5.32	98.5 3.88	5/8 × 105 M16X108
RD3G168089	RD3G168089G	150 × 80 6 × 3	168.3 × 88.9 6.625 × 3.500	20.7 300	20.7 300	16 232	20 290	89 3.50	247 9.72	160 6.30	141 5.55	98.5 3.88	5/8 × 105 M16X108
RD3G168114	RD3G168114G	150 × 100 6 × 4	168.3 × 114.3 6.625 × 4.500	20.7 300	20.7 300	16 232	20 290	114 4.50	247 9.72	156.5 6.16	138 5.43	98.5 3.88	5/8 × 105 M16X108
RD3G219076	RD3G219076G	200 × 65 8 × 2½	219.1 × 76.1 8.625 × 3.000	20.7 300	20.7 300	16 232	20 290	70 2.75	320 12.60	118 4.65	158 6.22	125 4.92	3/4 × 115 M20X115
RD3G219089	RD3G219089G	200 × 80 8 × 3	219.1 × 88.9 8.625 × 3.500	20.7 300	20.7 300	16 232	20 290	89 3.50	320 12.60	136.5 5.37	161 6.34	125 4.92	3/4 × 115 M20X115
RD3G219114	RD3G219114G	200 × 100 8 × 4	219.1 × 114.3 8.625 × 4.500	20.7 300	20.7 300	16 232	20 290	114 4.50	320 12.60	162 6.38	161 6.34	125 4.92	3/4 × 115 M20X115

Mechanical Tee Grooved Outlet Model 3G



1. Pipe Preparation

Clean the gasket sealing surface within 16mm of the hole and visually inspect the sealing surface for defects that may prevent proper sealing of the gasket. Don't drill the hole on weld line.



2. Remove Burrs

If any burrs or slug exists at the pipe hole, please remove them before assembly, to protect the gasket and avoid leakage.



3. Gasket installation

Insert the gasket into outlet housing making sure the tab in the gasket line up with the tab recesses in the housing. Align outlet housing over the pipe hole making sure that the locating collar is in the pipe hole.



4. Alignment

Align the strap around the pipe, insert the bolts and tighten the nuts finger tight.



5. Tighten Nuts

Alternatively and evenly tighten the nuts to the specified bolt torque.



6. Assembly completed

There should be even gaps on two sides between upper and lower housings.

Caution

Proper torquing of bolts is required to obtain specified performance.

- Over torquing the bolts may result in damage to the bolt and / or casting which could result in pipe joint separation.
- Under torquing the bolts may result in lower pressure retention capabilities, lower bend load capabilities, joint leakage and pipe joint separation. Pipe joint separation may result in significant property damage and serious injury.

Specified Bolt Torque ANSI BOLTS

Bolt Size Inch	Specified Bolt Torque	
	Lbs-Ft.	N.m
3/8	30-45	40-60
1/2	80-100	110-135
5/8	100-130	135-175
3/4	-	-
7/8	-	-