



Rapidrop Europe Ltd

Fire Detection & Suppression Equipment

Product Guide
2020



3	Typical Sprinkler Layout		32-33	Residential Concealed and Flush Pendent Sprinklers	
4	Flexible Sprinkler Connection Kits		34-35	Wet Alarm Valves	
5	Flexible Sprinkler Connections Components		36	Switches and Guages	
6	Standard Response Pendent Sprinklers 15mm K80 (SSP)		37-38	Residential Sprinkler System Equipment	
7	Quick Response Pendent Sprinklers 15mm K80 (SSP)		39-43	Butterfly Valves	
8	Special Response Pendent Sprinklers 15mm K80 (SSP)		44-45	NRS Gate Valves	
9	Standard Response Upright Sprinklers 15mm K80 (SSU)		46	OS&Y Gate Valves	
10	Quick Response Upright Sprinklers 15mm K80 (SSU)		47	PIV Gate Valves	
11	Special Response Upright Sprinklers 15mm K80 (SSU)		48-49	Test & Drain Valves	
12	Standard Response Conventional Sprinklers 15mm K80 (CUP)		50	Ball Valves	
13	Quick Response Conventional Sprinklers 15mm K80 (CUP)		51-52	Non-Return Valves	
14	Special Response Conventional Sprinklers 15mm K80 (CUP)		53	Double Door Wafer Check Valves	
15	Standard Response Sprinklers Sidewall 15mm (K80) HSW		54	Brass Spring Check Valves	
16	Quick Response Sprinklers Sidewall 15mm (K80) HSW		55	Y-Type Strainers	
17	Standard Response Sprinklers Pendent 20mm (K115) SSP		56	Foot Valves	
18	Quick Response Sprinklers Pendent 20mm (K115) SSP		57	Brass Gate Valves	
19	Standard Response Sprinklers Upright 20mm (K115) SSU		58	Zone Assemblies	
20	Quick Response Sprinklers Upright 20mm (K115) SSU		59-62	Flow Meters	
21	Standard Response Sprinklers Pendent 15mm (K115) SSP		63	High Pressure Valves	
22	Quick Response Sprinklers Pendent 15mm (K115) SSP		64-65	Cla-Val Pressure Reducing Valves	
23	Standard Response Sprinklers Upright 15mm (K115) SSU		66-68	Cla-Val Pressure Relief Valves	
24	Quick Response Sprinklers Upright 15mm (K115) SSU		69-70	Cla-Val Deluge Valves	
25	Sprinkler Accessories		71	Dry Barrel Fire Hydrants	
26	Sprinkler Guard and Shields		72-77	Grooved Couplings and Fittings	
27	Shielding Caps		78-79	Water Spray Nozzles	
28-31	Commercial Concealed and Flush Pendent Sprinklers		80	Contact Information	

1. RAPIDROP FLEXIBLE

CNBOP/LPCB/UL
(no braiding SP)

RDRSP1A (780mm)
RDRSP2AS (1000mm)
RDRSP2A (1220mm)
RDRSP3A (1540mm)
RDRSP4A (1880mm)
RDRSP5A (2540mm)
RDRSP6A (3220mm)

FM/VdS/CNBOP
(with braiding SPB)

RDRSPB1AV (780mm)
RDRSPB2AV (1220mm)
RDRSPB3AV (1540mm)
RDRSPB4AV (1880mm)
RDRSPB5AV (2540mm)

FM/LPCB
(with braiding SMB)

RDSMB01 (780mm)
RDSMB02 (1000mm)
RDSMB03 (1220mm)
RDSMB04 (1540mm)
RDSMB05 (1880mm)

MINIMUM RADIUS INDICATOR

RDRMRI075
(non-braided model SP)

RDBMRI075
(Braided model SMB)

6. B BRACKET (X 2)

FOR LAY-IN GRID CEILINGS

Pendent Sprinkler Head
(Bracket B11) **RDRB11**
Concealed Sprinkler Head
(Bracket B07) **RDRB07**

FOR PLASTERBOARD CEILINGS

Pendent Sprinkler Head
(Bracket B01) **RDRB01**
Concealed Sprinkler Head
(Bracket B90) **RDRB900**

2. INLET NIPPLE

RDRNIPLER1
(25mm x 25mm)

RDRNIPLER1.1/4
(32mm x 25mm) - UK

3. OUTLET REDUCER

STRAIGHT REDUCER
RDREDR 1/2 NPT or **RDREDR 3/4 NPT**
1/2" NPT (15mm) or 3/4" NPT (20mm)

REDUCING ELBOW
RDREDELB015S or **RDREDELB020S**
1/2" NPT (15mm) or 3/4" NPT (20mm)

5. A BRACKET

A2 Bracket
RDRBA

4. SUPPORT BAR

RDRSBAR0640 (640mm)
RDRSBAR0800 (800mm)
RDRSBAR1000 (1000mm)
RDRSBAR1RD240 (1240mm)
RDRSBAR1600 (1600mm)



Cert/LPCB/ ref. 566e/01



FLEXIBLE SPRINKLER CONNECTION KITS

Each standard kit includes:

- 1x Flexible Hose
- 1x A Bracket
- 2x B Bracket
- 1x Reducer
- 1x Support Bar (up to 1000mm in length)
- 1x Inlet Nipple
- 1x Outlet Reducer

PART NUMBER	DESCRIPTION	BOX QTY
Datasheet No. 3.01, 3.03, 3.11		
RDRSP1A	Flexible Connection Kit with 780mm Model SP Flexible Hose, LPCB, UL, CNBOP	10
RDRSP2AS	Flexible Connection Kit with 1000mm Model SP Flexible Hose, LPCB, UL, CNBOP	10
RDRSP2A	Flexible Connection Kit with 1220mm Model SP Flexible Hose, LPCB, UL, CNBOP	10
RDRSP3A	Flexible Connection Kit with 1540mm Model SP Flexible Hose, LPCB, UL, CNBOP	10
RDRSP4A	Flexible Connection Kit with 1880mm Model SP Flexible Hose, LPCB, UL, CNBOP	10
RDRSP5A	Flexible Connection Kit with 2540mm Model SP Flexible Hose, LPCB, CNBOP	10
RDSMB01	Flexible Connection Kit with 780mm Model SMB Braided Flexible Hose, FM, LPCB	10
RDSMB02	Flexible Connection Kit with 1000mm Model SMB Braided Flexible Hose, FM, LPCB	10
RDSMB03	Flexible Connection Kit with 1220mm Model SMB Braided Flexible Hose, FM, LPCB	10
RDSMB04	Flexible Connection Kit with 1540mm Model SMB Braided Flexible Hose, FM, LPCB	10
RDSMB05	Flexible Connection Kit with 1830mm Model SMB Braided Flexible Hose, FM, LPCB	10
RDRSPB1AV	Flexible Connection Kit with 780mm Model SPB Braided Flexible Hose, FM, VdS, CNBOP	10
RDRSP2BAV	Flexible Connection Kit with 1220mm Model SPB Braided Flexible Hose, FM, VdS, CNBOP	10
RDRSP3AV	Flexible Connection Kit with 1540mm Model SPB Braided Flexible Hose, FM, VdS, CNBOP	10
RDRSP4AV	Flexible Connection Kit with 1880mm Model SPB Braided Flexible Hose, FM, VdS, CNBOP	10
RDRSP5AV	Flexible Connection Kit with 2540mm Model SPB Braided Flexible Hose, VdS, CNBOP	10



FLEXIBLE SPRINKLER CONNECTION COMPONENTS

- Full range of bars, brackets and reducers for the different ceiling applications
- Bars over 1600mm are available as special order

PART NUMBER	DESCRIPTION	BAG / BOX QTY
Datasheet No. 3.05, 3.12		
RDRBA	A2 bracket	10 / 200
RDRB01	B01 bracket (SSP sprinkler head in plasterboard ceiling)	20 / 400
RDRB09	B09 bracket (concealed sprinkler head in plasterboard ceiling)	20 / 200
RDRB900	B900 bracket (concealed sprinkler head in plasterboard ceiling)	20 / 200
RDRB11	B11 bracket (SSP sprinkler head in lay-in grid ceiling)	20 / 200
RDRB07	B07 bracket (concealed sprinkler head in lay-in grid ceiling)	20 / 360
RDRB04-1E	B04-1E bracket (FM approved)	20 / 360
RDRMRI075	Minimum Radius Indicator (For unbraided SP)	100
RDBMRI075	Minimum Radius Indicator (For braided SMB)	100
RDRNIPPLER1	1" inlet nipple	10 / 100
RDRNIPPLER1.1/4	1 1/4" inlet nipple	10 / 100
RDREDR1/2NPT	1/2" reducer 110mm long	80
RDREDR3/4NPT	3/4" reducer 110mm long	80
RDREDR1/2NPT140	1/2" reducer 140mm long	80
RDREDR3/4NPT140	3/4" reducer 140mm long	80
RDREDR1/2L	1/2" reducer 170mm long	50
RDREDR1/2LTH	1/2" reducer threaded 170mm long, Inc Nut	50
RDREDELB015S	Short radius 90 degree elbow 1/2"	36
RDREDELB020S	Short radius 90 degree elbow 3/4"	36
RDREDELB015	Standard radius 90 degree elbow 1/2"	36
RDREDELB020	Standard radius 90 degree elbow 3/4"	36
RDRSBAR0640	640mm long support bar	60
RDRSBAR0800	800mm long support bar	60
RDRSBAR1000	1000mm long support bar	60
RDRSBAR1RD240	1240mm long support bar	40
RDRSBAR1600	1600mm long support bar	40

Standard Response Pendent Sprinklers 15mm K80 (SSP)



Cert/LPCB/ ref. 566d/01



MODEL: RD022

- CE, LPCB, UL, FM & VdS approved
- Spray Pendent (SSP)
- Brass, Chrome and paint finish
- Special RAL colours available on request
- Standard Response
- 5mm Bulb
- UK Manufactured



RAL Colour Match



Sprinkler Wrench
RDSPKSPANV2

PART NUMBER	DESCRIPTION	BOX QTY
Datasheet No. 4.18		
RDM022057P	½" SSP (Pendent) brass sprinkler standard response (5mm bulb) K=80, 57 degrees	100
RDM022068P	½" SSP (Pendent) brass sprinkler standard response (5mm bulb) K=80, 68 degrees	100
RDM022079P	½" SSP (Pendent) brass sprinkler standard response (5mm bulb) K=80, 79 degrees	100
RDM022093P	½" SSP (Pendent) brass sprinkler standard response (5mm bulb) K=80, 93 degrees	100
RDM022141P	½" SSP (Pendent) brass sprinkler standard response (5mm bulb) K=80, 141 degrees	100
RDM022057C	½" SSP (Pendent) chrome sprinkler standard response (5mm bulb) K=80, 57 degrees	100
RDM022068C	½" SSP (Pendent) chrome sprinkler standard response (5mm bulb) K=80, 68 degrees	100
RDM022079C	½" SSP (Pendent) chrome sprinkler standard response (5mm bulb) K=80, 79 degrees	100
RDM022093C	½" SSP (Pendent) chrome sprinkler standard response (5mm bulb) K=80, 93 degrees	100
RDM022141C	½" SSP (Pendent) chrome sprinkler standard response (5mm bulb) K=80, 141 degrees	100
RDM022057R9010	½" SSP (Pendent) white sprinkler standard response (5mm bulb) K=80, 57 degrees "	100
RDM022068R9010	½" SSP (Pendent) white sprinkler standard response (5mm bulb) K=80, 68 degrees	100
RDM022079R9010	½" SSP (Pendent) white sprinkler standard response (5mm bulb) K=80, 79 degrees	100
RDM022093R9010	½" SSP (Pendent) white sprinkler standard response (5mm bulb) K=80, 93 degrees	100
RDM022141R9010	½" SSP (Pendent) white sprinkler standard response (5mm bulb) K=80, 141 degrees	100



Cert/LPCB/ ref. 566d/02



MODEL: RD023

- CE, LPCB, UL, FM & VdS approved
- Spray Pendent (SSP)
- Brass, Chrome and paint finish
- Special RAL colours available on request
- Quick Response
- 3mm Bulb
- UK Manufactured



RAL Colour Match



Sprinkler Wrench
RDSPKSPANV2

PART NUMBER	DESCRIPTION	BOX QTY
Datasheet No. 4.18		
RDM023057P	½" SSP (Pendent) brass sprinkler quick response (3mm bulb) K=80, 57 degrees	100
RDM023068P	½" SSP (Pendent) brass sprinkler quick response (3mm bulb) K=80, 68 degrees	100
RDM023079P	½" SSP (Pendent) brass sprinkler quick response (3mm bulb) K=80, 79 degrees	100
RDM023093P	½" SSP (Pendent) brass sprinkler quick response (3mm bulb) K=80, 93 degrees	100
RDM023141P	½" SSP (Pendent) brass sprinkler quick response (3mm bulb) K=80, 141 degrees	100
RDM023057C	½" SSP (Pendent) chrome sprinkler quick response (3mm bulb) K=80, 57 degrees	100
RDM023068C	½" SSP (Pendent) chrome sprinkler quick response (3mm bulb) K=80, 68 degrees	100
RDM023079C	½" SSP (Pendent) chrome sprinkler quick response (3mm bulb) K=80, 79 degrees	100
RDM023093C	½" SSP (Pendent) chrome sprinkler quick response (3mm bulb) K=80, 93 degrees	100
RDM023141C	½" SSP (Pendent) chrome sprinkler quick response (3mm bulb) K=80, 141 degrees	100
RDM023057R9010	½" SSP (Pendent) white sprinkler quick response (3mm bulb) K=80, 57 degrees	100
RDM023068R9010	½" SSP (Pendent) white sprinkler quick response (3mm bulb) K=80, 68 degrees	100
RDM023079R9010	½" SSP (Pendent) white sprinkler quick response (3mm bulb) K=80, 79 degrees	100
RDM023093R9010	½" SSP (Pendent) white sprinkler quick response (3mm bulb) K=80, 93 degrees	100
RDM023141R9010	½" SSP (Pendent) white sprinkler quick response (3mm bulb) K=80, 141 degrees	100



MODEL: RD0031

- CE, LPCB & VdS approved
- Conventional (CUP)
- Brass, Chrome and paint finish
- Special RAL colours available on request
- Special Response
- 4mm Bulb
- UK Manufactured



RAL Colour Match



Sprinkler Wrench
RDSPKSPANV2

PART NUMBER	DESCRIPTION	BOX QTY
Datasheet No. 4.18		
RD031057P	½" SSP (pendent) brass sprinkler special response (4mm bulb) K=80, 57 degrees	100
RD031068P	½" SSP (pendent) brass sprinkler special response (4mm bulb) K=80, 68 degrees	100
RD031079P	½" SSP (pendent) brass sprinkler special response (4mm bulb) K=80, 79 degrees	100
RD031093P	½" SSP (pendent) brass sprinkler special response (4mm bulb) K=80, 93 degrees	100
RD031141P	½" SSP (pendent) brass sprinkler special response (4mm bulb) K=80, 141 degrees	100
RD031057C	½" SSP (pendent) chrome sprinkler special response (4mm bulb) K=80, 57 degrees	100
RD031068C	½" SSP (pendent) chrome sprinkler special response (4mm bulb) K=80, 68 degrees	100
RD031079C	½" SSP (pendent) chrome sprinkler special response (4mm bulb) K=80, 79 degrees	100
RD031093C	½" SSP (pendent) chrome sprinkler special response (4mm bulb) K=80, 93 degrees	100
RD031141C	½" SSP (pendent) chrome sprinkler special response (4mm bulb) K=80, 141 degrees	100
RD031057R9010	½" SSP (pendent) white sprinkler special response (4mm bulb) K=80, 57 degrees	100
RD031068R9010	½" SSP (pendent) white sprinkler special response (4mm bulb) K=80, 68 degrees	100
RD031079R9010	½" SSP (pendent) white sprinkler special response (4mm bulb) K=80, 79 degrees	100
RD031093R9010	½" SSP (pendent) white sprinkler special response (4mm bulb) K=80, 93 degrees	100
RD031141R9010	½" SSP (pendent) white sprinkler special response (4mm bulb) K=80, 141 degrees	100



Cert/LPCB/ ref. 566d/01



MODEL: RD024

- CE, LPCB, UL, FM & VdS approved
- Upright (SSU)
- Brass, Chrome and paint finish
- Special RAL colours available on request
- Standard Response
- 5mm Bulb
- UK Manufactured



RAL Colour Match



Sprinkler Wrench
RDSPKSPANV2

PART NUMBER	DESCRIPTION	BOX QTY
Datasheet No. 4.18		
RDM024057P	½" SSU (upright) brass sprinkler standard response (5mm bulb) K=80, 57 degrees	100
RDM024068P	½" SSU (upright) brass sprinkler standard response (5mm bulb) K=80, 68 degrees	100
RDM024079P	½" SSU (upright) brass sprinkler standard response (5mm bulb) K=80, 79 degrees	100
RDM024093P	½" SSU (upright) brass sprinkler standard response (5mm bulb) K=80, 93 degrees	100
RDM024141P	½" SSU (upright) brass sprinkler standard response (5mm bulb) K=80, 141 degrees	100
RDM024057C	½" SSU (upright) chrome sprinkler standard response (5mm bulb) K=80, 57 degrees	100
RDM024068C	½" SSU (upright) chrome sprinkler standard response (5mm bulb) K=80, 68 degrees	100
RDM024079C	½" SSU (upright) chrome sprinkler standard response (5mm bulb) K=80, 79 degrees	100
RDM024093C	½" SSU (upright) chrome sprinkler standard response (5mm bulb) K=80, 93 degrees	100
RDM024141C	½" SSU (upright) chrome sprinkler standard response (5mm bulb) K=80, 141 degrees	100
RDM024057R9010	½" SSU (upright) white sprinkler standard response (5mm bulb) K=80, 57 degrees	100
RDM024068R9010	½" SSU (upright) white sprinkler standard response (5mm bulb) K=80, 68 degrees	100
RDM024079R9010	½" SSU (upright) white sprinkler standard response (5mm bulb) K=80, 79 degrees	100
RDM024093R9010	½" SSU (upright) white sprinkler standard response (5mm bulb) K=80, 93 degrees	100
RDM024141R9010	½" SSU (upright) white sprinkler standard response (5mm bulb) K=80, 141 degrees	100



Cert/LPCB/ ref. 566d/02



MODEL: RD025



- CE, LPCB, UL, FM & VdS approved
- Upright (SSU)
- Brass, Chrome and paint finish
- Special RAL colours available on request
- Quick Response
- 3mm Bulb
- UK Manufactured



RAL Colour Match



Sprinkler Wrench
RDSPKSPANV2

PART NUMBER	DESCRIPTION	BOX QTY
Datasheet No. 4.18		
RDM025057P	½" SSU (upright) brass sprinkler quick response (3mm bulb) K=80, 57 degrees	100
RDM025068P	½" SSU (upright) brass sprinkler quick response (3mm bulb) K=80, 68 degrees	100
RDM025079P	½" SSU (upright) brass sprinkler quick response (3mm bulb) K=80, 79 degrees	100
RDM025093P	½" SSU (upright) brass sprinkler quick response (3mm bulb) K=80, 93 degrees	100
RDM025141P	½" SSU (upright) brass sprinkler quick response (3mm bulb) K=80, 141 degrees	100
RDM025057C	½" SSU (upright) chrome sprinkler quick response (3mm bulb) K=80, 57 degrees	100
RDM025068C	½" SSU (upright) chrome sprinkler quick response (3mm bulb) K=80, 68 degrees	100
RDM025079C	½" SSU (upright) chrome sprinkler quick response (3mm bulb) K=80, 79 degrees	100
RDM025093C	½" SSU (upright) chrome sprinkler quick response (3mm bulb) K=80, 93 degrees	100
RDM025141C	½" SSU (upright) chrome sprinkler quick response (3mm bulb) K=80, 141 degrees	100
RDM025057R9010	½" SSU (upright) white sprinkler quick response (3mm bulb) K=80, 57 degrees	100
RDM025068R9010	½" SSU (upright) white sprinkler quick response (3mm bulb) K=80, 68 degrees	100
RDM025079R9010	½" SSU (upright) white sprinkler quick response (3mm bulb) K=80, 79 degrees	100
RDM025093R9010	½" SSU (upright) white sprinkler quick response (3mm bulb) K=80, 93 degrees	100
RDM025141R9010	½" SSU (upright) white sprinkler quick response (3mm bulb) K=80, 141 degrees	100



MODEL: RD0032

- CE, LPCB & VdS approved
- Conventional (CUP)
- Brass, Chrome and paint finish
- Special RAL colours available on request
- Special Response
- 4mm Bulb
- UK Manufactured



RAL Colour Match



Sprinkler Wrench
RDSPKSPANV2

PART NUMBER	DESCRIPTION	BOX QTY
Datasheet No. 4.18		
RD032057P	½" SSU (upright) brass sprinkler special response (4mm bulb) K=80, 57 degrees	100
RD032068P	½" SSU (upright) brass sprinkler special response (4mm bulb) K=80, 68 degrees	100
RD032079P	½" SSU (upright) brass sprinkler special response (4mm bulb) K=80, 79 degrees	100
RD032093P	½" SSU (upright) brass sprinkler special response (4mm bulb) K=80, 93 degrees	100
RD032141P	½" SSU (upright) brass sprinkler special response (4mm bulb) K=80, 141 degrees	100
RD032057C	½" SSU (upright) chrome sprinkler special response (4mm bulb) K=80, 57 degrees	100
RD032068C	½" SSU (upright) chrome sprinkler special response (4mm bulb) K=80, 68 degrees	100
RD032079C	½" SSU (upright) chrome sprinkler special response (4mm bulb) K=80, 79 degrees	100
RD032093C	½" SSU (upright) chrome sprinkler special response (4mm bulb) K=80, 93 degrees	100
RD032141C	½" SSU (upright) chrome sprinkler special response (4mm bulb) K=80, 141 degrees	100
RD032057R9010	½" SSU (upright) white sprinkler special response (4mm bulb) K=80, 57 degrees	100
RD032068R9010	½" SSU (upright) white sprinkler special response (4mm bulb) K=80, 68 degrees	100
RD032079R9010	½" SSU (upright) white sprinkler special response (4mm bulb) K=80, 79 degrees	100
RD032093R9010	½" SSU (upright) white sprinkler special response (4mm bulb) K=80, 93 degrees	100
RD032141R9010	½" SSU (upright) white sprinkler special response (4mm bulb) K=80, 141 degrees	100

Standard Response Conventional Sprinklers 1/2" K80 (CUP)



Cert/LPCB/ ref. 566d/01



MODEL: RD020

- CE, LPCB, VdS approved
- Conventional (CUP)
- Brass, Chrome and paint finish
- Special RAL colours available on request
- Standard Response
- 5mm Bulb
- UK Manufactured



RAL Colour Match



Sprinkler Wrench
RDSPKSPANV2

PART NUMBER	DESCRIPTION	BOX QTY
Datasheet No. 4.18		
RD020057P	1/2" CUP (conventional) brass sprinkler standard response (5mm bulb) K=80, 57 degrees	100
RD020068P	1/2" CUP (conventional) brass sprinkler standard response (5mm bulb) K=80, 68 degrees	100
RD020079P	1/2" CUP (conventional) brass sprinkler standard response (5mm bulb) K=80, 79 degrees	100
RD020093P	1/2" CUP (conventional) brass sprinkler standard response (5mm bulb) K=80, 93 degrees	100
RD020141P	1/2" CUP (conventional) brass sprinkler standard response (5mm bulb) K=80, 141 degrees	100
RD020057C	1/2" CUP (conventional) chrome sprinkler standard response (5mm bulb) K=80, 57 degrees	100
RD020068C	1/2" CUP (conventional) chrome sprinkler standard response (5mm bulb) K=80, 68 degrees	100
RD020079C	1/2" CUP (conventional) chrome sprinkler standard response (5mm bulb) K=80, 79 degrees	100
RD020093C	1/2" CUP (conventional) chrome sprinkler standard response (5mm bulb) K=80, 93 degrees	100
RD020141C	1/2" CUP (conventional) chrome sprinkler standard response (5mm bulb) K=80, 141 degrees	100
RD020057R9010	1/2" CUP (conventional) white sprinkler standard response (5mm bulb) K=80, 57 degrees	100
RD020068R9010	1/2" CUP (conventional) white sprinkler standard response (5mm bulb) K=80, 68 degrees	100
RD020079R9010	1/2" CUP (conventional) white sprinkler standard response (5mm bulb) K=80, 79 degrees	100
RD020093R9010	1/2" CUP (conventional) white sprinkler standard response (5mm bulb) K=80, 93 degrees	100
RD020141R9010	1/2" CUP (conventional) white sprinkler standard response (5mm bulb) K=80, 141 degrees	100



MODEL: RD021

- CE, LPCB VdS approved
- Conventional (CUP)
- Brass, Chrome and paint finish
- Special RAL colours available on request
- Quick Response
- 3mm Bulb
- UK Manufactured



RAL Colour Match



Sprinkler Wrench
RDSPKSPANV2

PART NUMBER	DESCRIPTION	BOX QTY
Datasheet No. 4.18		
RD021057P	½" CUP (conventional) brass sprinkler quick response (3mm bulb) K=80, 57 degrees	100
RD021068P	½" CUP (conventional) brass sprinkler quick response (3mm bulb) K=80, 68 degrees	100
RD021079P	½" CUP (conventional) brass sprinkler quick response (3mm bulb) K=80, 79 degrees	100
RD021093P	½" CUP (conventional) brass sprinkler quick response (3mm bulb) K=80, 93 degrees	100
RD021141P	½" CUP (conventional) brass sprinkler quick response (3mm bulb) K=80, 141 degrees	100
RD021057C	½" CUP (conventional) chrome sprinkler quick response (3mm bulb) K=80, 57 degrees	100
RD021068C	½" CUP (conventional) chrome sprinkler quick response (3mm bulb) K=80, 68 degrees	100
RD021079C	½" CUP (conventional) chrome sprinkler quick response (3mm bulb) K=80, 79 degrees	100
RD021093C	½" CUP (conventional) chrome sprinkler quick response (3mm bulb) K=80, 93 degrees	100
RD021141C	½" CUP (conventional) chrome sprinkler quick response (3mm bulb) K=80, 141 degrees	100
RD021057R9010	½" CUP (conventional) white sprinkler quick response (3mm bulb) K=80, 57 degrees	100
RD021068R9010	½" CUP (conventional) white sprinkler quick response (3mm bulb) K=80, 68 degrees	100
RD021079R9010	½" CUP (conventional) white sprinkler quick response (3mm bulb) K=80, 79 degrees	100
RD021093R9010	½" CUP (conventional) white sprinkler quick response (3mm bulb) K=80, 93 degrees	100
RD021141W	½" CUP (conventional) white sprinkler quick response (3mm bulb) K=80, 141 degrees	100



MODEL: RD0030

- CE, LPCB & VdS approved
- Conventional (CUP)
- Brass, Chrome and paint finish
- Special RAL colours available on request
- Special Response
- 4mm Bulb
- UK Manufactured



RAL Colour Match



Sprinkler Wrench
RDSPKSPANV2

PART NUMBER	DESCRIPTION	BOX QTY
Datasheet No. 4.18		
RD030057P	1/2" CUP (conventional) brass sprinkler special response (4mm bulb) K=80, 57 degrees	100
RD030068P	1/2" CUP (conventional) brass sprinkler special response (4mm bulb) K=80, 68 degrees	100
RD030079P	1/2" CUP (conventional) brass sprinkler special response (4mm bulb) K=80, 79 degrees	100
RD030093P	1/2" CUP (conventional) brass sprinkler special response (4mm bulb) K=80, 93 degrees	100
RD030141P	1/2" CUP (conventional) brass sprinkler special response (4mm bulb) K=80, 141 degrees	100
RD030057C	1/2" CUP (conventional) chrome sprinkler special response (4mm bulb) K=80, 57 degrees	100
RD030068C	1/2" CUP (conventional) chrome sprinkler special response (4mm bulb) K=80, 68 degrees	100
RD030079C	1/2" CUP (conventional) chrome sprinkler special response (4mm bulb) K=80, 79 degrees	100
RD030093C	1/2" CUP (conventional) chrome sprinkler special response (4mm bulb) K=80, 93 degrees	100
RD030141C	1/2" CUP (conventional) chrome sprinkler special response (4mm bulb) K=80, 141 degrees	100
RD030057R9010	1/2" CUP (conventional) white sprinkler special response (4mm bulb) K=80, 57 degrees	100
RD030068R9010	1/2" CUP (conventional) white sprinkler special response (4mm bulb) K=80, 68 degrees	100
RD030079R9010	1/2" CUP (conventional) white sprinkler special response (4mm bulb) K=80, 79 degrees	100
RD030093R9010	1/2" CUP (conventional) white sprinkler special response (4mm bulb) K=80, 93 degrees	100
RD030141R9010	1/2" CUP (conventional) white sprinkler special response (4mm bulb) K=80, 141 degrees	100



Cert/LPCB/ ref. 566d/01



MODEL: RD060

- CE, LPCB, UL, FM & VdS approved
- Sidewall (HSW)
- Brass, Chrome and paint finish
- Special RAL colours available on request
- Standard Response
- 5mm Bulb
- UK Manufactured



RAL Colour Match



Sprinkler Wrench
RDSPKSPANV2

PART NUMBER	DESCRIPTION	BOX QTY
Datasheet No. 4.53		
RDM060057P	½" HSW (Horizontal Side Wall) brass sprinkler standard response (5mm bulb) K=80, 57 degrees	100
RDM060068P	½" HSW (Horizontal Side Wall) brass sprinkler standard response (5mm bulb) K=80, 68 degrees	100
RDM060079P	½" HSW (Horizontal Side Wall) brass sprinkler standard response (5mm bulb) K=80, 79 degrees	100
RDM060093P	½" HSW (Horizontal Side Wall) brass sprinkler standard response (5mm bulb) K=80, 93 degrees	100
RDM060141P	½" HSW (Horizontal Side Wall) brass sprinkler standard response (5mm bulb) K=80, 141 degrees	100
RDM060057C	½" HSW (Horizontal Side Wall) chrome sprinkler standard response (5mm bulb) K=80, 57 degrees	100
RDM060068C	½" HSW (Horizontal Side Wall) chrome sprinkler standard response (5mm bulb) K=80, 68 degrees	100
RDM060079C	½" HSW (Horizontal Side Wall) chrome sprinkler standard response (5mm bulb) K=80, 79 degrees	100
RDM060093C	½" HSW (Horizontal Side Wall) chrome sprinkler standard response (5mm bulb) K=80, 93 degrees	100
RDM060141C	½" HSW (Horizontal Side Wall) chrome sprinkler standard response (5mm bulb) K=80, 141 degrees	100
RDM060057R9010	½" HSW (Horizontal Side Wall) white sprinkler standard response (5mm bulb) K=80, 57 degrees	100
RDM060068R9010	½" HSW (Horizontal Side Wall) white sprinkler standard response (5mm bulb) K=80, 68 degrees	100
RDM060079R9010	½" HSW (Horizontal Side Wall) white sprinkler standard response (5mm bulb) K=80, 79 degrees	100
RDM060093R9010	½" HSW (Horizontal Side Wall) white sprinkler standard response (5mm bulb) K=80, 93 degrees	100
RDM060141R9010	½" HSW (Horizontal Side Wall) white sprinkler standard response (5mm bulb) K=80, 141 degrees	100



Cert/LPCB/ ref. 566d/02



MODEL: RD061

- CE, LPCB, UL, FM & VdS approved
- Sidewall (HSW)
- Brass, Chrome and paint finish
- Special RAL colours available on request
- Quick Response
- 3mm Bulb
- UK Manufactured



RAL Colour Match



Sprinkler Wrench
RDSPKSPANV2

PART NUMBER	DESCRIPTION	BOX QTY
Datasheet No. 4.53		
RDM061057P	½" HSW (Horizontal Side Wall) brass sprinkler quick response (3mm bulb) K=80, 57 degrees	100
RDM061068P	½" HSW (Horizontal Side Wall) brass sprinkler quick response (3mm bulb) K=80, 68 degrees	100
RDM061079P	½" HSW (Horizontal Side Wall) brass sprinkler quick response (3mm bulb) K=80, 79 degrees	100
RDM061093P	½" HSW (Horizontal Side Wall) brass sprinkler quick response (3mm bulb) K=80, 93 degrees	100
RDM061141P	½" HSW (Horizontal Side Wall) brass sprinkler quick response (3mm bulb) K=80, 141 degrees	100
RDM061057C	½" HSW (Horizontal Side Wall) chrome sprinkler quick response (3mm bulb) K=80, 57 degrees	100
RDM061068C	½" HSW (Horizontal Side Wall) chrome sprinkler quick response (3mm bulb) K=80, 68 degrees	100
RDM061079C	½" HSW (Horizontal Side Wall) chrome sprinkler quick response (3mm bulb) K=80, 79 degrees	100
RDM061093C	½" HSW (Horizontal Side Wall) chrome sprinkler quick response (3mm bulb) K=80, 93 degrees	100
RDM061141C	½" HSW (Horizontal Side Wall) chrome sprinkler quick response (3mm bulb) K=80, 141 degrees	100
RDM061057R9010	½" HSW (Horizontal Side Wall) white sprinkler quick response (3mm bulb) K=80, 57 degrees	100
RDM061068R9010	½" HSW (Horizontal Side Wall) white sprinkler quick response (3mm bulb) K=80, 68 degrees	100
RDM061079R9010	½" HSW (Horizontal Side Wall) white sprinkler quick response (3mm bulb) K=80, 79 degrees	100
RDM061093R9010	½" HSW (Horizontal Side Wall) white sprinkler quick response (3mm bulb) K=80, 93 degrees	100
RDM061141R9010	½" HSW (Horizontal Side Wall) white sprinkler quick response (3mm bulb) K=80, 141 degrees	100



Cert/LPCB/ ref. 566d/01



MODEL: RD042

- CE, LPCB, UL, FM & VdS approved
- Pendent (SSP)
- Brass, Chrome and paint finish
- Special RAL colours available on request
- Standard Response
- 5mm Bulb
- UK Manufactured



RAL Colour Match



Sprinkler Wrench
RDSPKSPANV2

PART NUMBER	DESCRIPTION	BOX QTY
Datasheet No. 4.51		
RDM042057P	3/4" SSP (pendent) brass sprinkler standard response (5mm bulb) K=115, 57 degrees	100
RDM042068P	3/4" SSP (pendent) brass sprinkler standard response (5mm bulb) K=115, 68 degrees	100
RDM042079P	3/4" SSP (pendent) brass sprinkler standard response (5mm bulb) K=115, 79 degrees	100
RDM042093P	3/4" SSP (pendent) brass sprinkler standard response (5mm bulb) K=115, 93 degrees	100
RDM042141P	3/4" SSP (pendent) brass sprinkler standard response (5mm bulb) K=115, 141 degrees	100
RDM042057C	3/4" SSP (pendent) chrome sprinkler standard response (5mm bulb) K=115, 57 degrees	100
RDM042068C	3/4" SSP (pendent) chrome sprinkler standard response (5mm bulb) K=115, 68 degrees	100
RDM042079C	3/4" SSP (pendent) chrome sprinkler standard response (5mm bulb) K=115, 79 degrees	100
RDM042093C	3/4" SSP (pendent) chrome sprinkler standard response (5mm bulb) K=115, 93 degrees	100
RDM042141C	3/4" SSP (pendent) chrome sprinkler standard response (5mm bulb) K=115, 141 degrees	100
RDM042057R9010	3/4" SSP (pendent) white sprinkler standard response (5mm bulb) K=115, 57 degrees	100
RDM042068R9010	3/4" SSP (pendent) white sprinkler standard response (5mm bulb) K=115, 68 degrees	100
RDM042079R9010	3/4" SSP (pendent) white sprinkler standard response (5mm bulb) K=115, 79 degrees	100
RDM042093R9010	3/4" SSP (pendent) white sprinkler standard response (5mm bulb) K=115, 93 degrees	100
RDM042141R9010	3/4" SSP (pendent) white sprinkler standard response (5mm bulb) K=115, 141 degrees	100



Cert/LPCB/ ref. 566d/02



MODEL: RD043

- CE, LPCB, UL, FM & VdS approved
- Pendent (SSP)
- Brass, Chrome and paint finish
- Special RAL colours available on request
- Quick Response
- 3mm Bulb
- UK Manufactured



RAL Colour Match



Sprinkler Wrench
RDSPKSPANV2

PART NUMBER	DESCRIPTION	BOX QTY
Datasheet No. 4.51		
RDM043057P	¾" SSP (pendent) brass sprinkler quick response (3mm bulb) K=115, 57 degrees	100
RDM043068P	¾" SSP (pendent) brass sprinkler quick response (3mm bulb) K=115, 68 degrees	100
RDM043079P	¾" SSP (pendent) brass sprinkler quick response (3mm bulb) K=115, 79 degrees	100
RDM043093P	¾" SSP (pendent) brass sprinkler quick response (3mm bulb) K=115, 93 degrees	100
RDM043141P	¾" SSP (pendent) brass sprinkler quick response (3mm bulb) K=115, 141 degrees	100
RDM043057C	¾" SSP (pendent) chrome sprinkler quick response (3mm bulb) K=115, 57 degrees	100
RDM043068C	¾" SSP (pendent) chrome sprinkler quick response (3mm bulb) K=115, 68 degrees	100
RDM043079C	¾" SSP (pendent) chrome sprinkler quick response (3mm bulb) K=115, 79 degrees	100
RDM043093C	¾" SSP (pendent) chrome sprinkler quick response (3mm bulb) K=115, 93 degrees	100
RDM043141C	¾" SSP (pendent) chrome sprinkler quick response (3mm bulb) K=115, 141 degrees	100
RDM043057R9010	¾" SSP (pendent) white sprinkler quick response (3mm bulb) K=115, 57 degrees	100
RDM043068R9010	¾" SSP (pendent) white sprinkler quick response (3mm bulb) K=115, 68 degrees	100
RDM043079R9010	¾" SSP (pendent) white sprinkler quick response (3mm bulb) K=115, 79 degrees	100
RDM043093R9010	¾" SSP (pendent) white sprinkler quick response (3mm bulb) K=115, 93 degrees	100
RDM043141R9010	¾" SSP (pendent) white sprinkler quick response (3mm bulb) K=115, 141 degrees	100



Cert/LPCB/ ref. 566d/01



MODEL: RD044

- CE, LPCB, UL, FM & VdS approved
- Upright (SSU)
- Brass, Chrome and paint finish
- Special RAL colours available on request
- Standard Response
- 5mm Bulb
- UK Manufactured



RAL Colour Match



Sprinkler Wrench
RDSPKSPANV2

PART NUMBER	DESCRIPTION	BOX QTY
Datasheet No. 4.52		
RDM044057P	¾" SSU (upright) brass sprinkler standard response (5mm bulb) K=115, 57 degrees	100
RDM044068P	¾" SSU (upright) brass sprinkler standard response (5mm bulb) K=115, 68 degrees	100
RDM044079P	¾" SSU (upright) brass sprinkler standard response (5mm bulb) K=115, 79 degrees	100
RDM044093P	¾" SSU (upright) brass sprinkler standard response (5mm bulb) K=115, 93 degrees	100
RDM044141P	¾" SSU (upright) brass sprinkler standard response (5mm bulb) K=115, 141 degrees	100
RDM044057C	¾" SSU (upright) chrome sprinkler standard response (5mm bulb) K=115, 57 degrees	100
RDM044068C	¾" SSU (upright) chrome sprinkler standard response (5mm bulb) K=115, 68 degrees	100
RDM044079C	¾" SSU (upright) chrome sprinkler standard response (5mm bulb) K=115, 79 degrees	100
RDM044093C	¾" SSU (upright) chrome sprinkler standard response (5mm bulb) K=115, 93 degrees	100
RDM044141C	¾" SSU (upright) chrome sprinkler standard response (5mm bulb) K=115, 141 degrees	100
RDM044057R9010	¾" SSU (upright) white sprinkler standard response (5mm bulb) K=115, 57 degrees	100
RDM044068R9010	¾" SSU (upright) white sprinkler standard response (5mm bulb) K=115, 68 degrees	100
RDM044079R9010	¾" SSU (upright) white sprinkler standard response (5mm bulb) K=115, 79 degrees	100
RDM044093R9010	¾" SSU (upright) white sprinkler standard response (5mm bulb) K=115, 93 degrees	100
RDM044141R9010	¾" SSU (upright) white sprinkler standard response (5mm bulb) K=115, 141 degrees	100



Cert/LPCB/ ref. 566d/02



MODEL: RD045

- CE, LPCB, UL, FM & VdS approved
- Upright (SSU)
- Brass, Chrome and paint finish
- Special RAL colours available on request
- Quick Response
- 3mm Bulb
- UK Manufactured



RAL Colour Match



Sprinkler Wrench
RDSPKSPANV2

PART NUMBER	DESCRIPTION	BOX QTY
Datasheet No. 4.52		
RDM045057P	¾" SSU (upright) brass sprinkler quick response (3mm bulb) K=115, 57 degrees	100
RDM045068P	¾" SSU (upright) brass sprinkler quick response (3mm bulb) K=115, 68 degrees	100
RDM045079P	¾" SSU (upright) brass sprinkler quick response (3mm bulb) K=115, 79 degrees	100
RDM045093P	¾" SSU (upright) brass sprinkler quick response (3mm bulb) K=115, 93 degrees	100
RDM045141P	¾" SSU (upright) brass sprinkler quick response (3mm bulb) K=115, 141 degrees	100
RDM045057C	¾" SSU (upright) chrome sprinkler quick response (3mm bulb) K=115, 57 degrees	100
RDM045068C	¾" SSU (upright) chrome sprinkler quick response (3mm bulb) K=115, 68 degrees	100
RDM045079C	¾" SSU (upright) chrome sprinkler quick response (3mm bulb) K=115, 79 degrees	100
RDM045093C	¾" SSU (upright) chrome sprinkler quick response (3mm bulb) K=115, 93 degrees	100
RDM045141C	¾" SSU (upright) chrome sprinkler quick response (3mm bulb) K=115, 141 degrees	100
RDM045057R9010	¾" SSU (upright) white sprinkler quick response (3mm bulb) K=115, 57 degrees	100
RDM045068R9010	¾" SSU (upright) white sprinkler quick response (3mm bulb) K=115, 68 degrees	100
RDM045079R9010	¾" SSU (upright) white sprinkler quick response (3mm bulb) K=115, 79 degrees	100
RDM045093R9010	¾" SSU (upright) white sprinkler quick response (3mm bulb) K=115, 93 degrees	100
RDM045141R9010	¾" SSU (upright) white sprinkler quick response (3mm bulb) K=115, 141 degrees	100



Cert/LPCB/ ref. 566d/01



MODEL: RD052

- CE, LPCB, UL, FM & VdS approved
- Pendent (SSP)
- Brass, Chrome and paint finish
- Special RAL colours available on request
- Standard Response
- 5mm Bulb
- UK Manufactured



RAL Colour Match



Sprinkler Wrench
RDSPKSPANV2

PART NUMBER	DESCRIPTION	BOX QTY
Datasheet No. 4.52		
RDM052057P	½" SSP (pendent) brass sprinkler standard response (5mm bulb) K=115, 57 degrees	100
RDM052068P	½" SSP (pendent) brass sprinkler standard response (5mm bulb) K=115, 68 degrees	100
RDM052079P	½" SSP (pendent) brass sprinkler standard response (5mm bulb) K=115, 79 degrees	100
RDM052093P	½" SSP (pendent) brass sprinkler standard response (5mm bulb) K=115, 93 degrees	100
RDM052141P	½" SSP (pendent) brass sprinkler standard response (5mm bulb) K=115, 141 degrees	100
RDM052057C	½" SSP (pendent) chrome sprinkler standard response (5mm bulb) K=115, 57 degrees	100
RDM052068C	½" SSP (pendent) chrome sprinkler standard response (5mm bulb) K=115, 68 degrees	100
RDM052079C	½" SSP (pendent) chrome sprinkler standard response (5mm bulb) K=115, 79 degrees	100
RDM052093C	½" SSP (pendent) chrome sprinkler standard response (5mm bulb) K=115, 93 degrees	100
RDM052141C	½" SSP (pendent) chrome sprinkler standard response (5mm bulb) K=115, 141 degrees	100
RDM052057R9010	½" SSP (pendent) white sprinkler standard response (5mm bulb) K=115, 57 degrees	100
RDM052068R9010	½" SSP (pendent) white sprinkler standard response (5mm bulb) K=115, 68 degrees	100
RDM052079R9010	½" SSP (pendent) white sprinkler standard response (5mm bulb) K=115, 79 degrees	100
RDM052093R9010	½" SSP (pendent) white sprinkler standard response (5mm bulb) K=115, 93 degrees	100
RDM052141R9010	½" SSP (pendent) white sprinkler standard response (5mm bulb) K=115, 141 degrees	100



Cert/LPCB/ ref. 566d/02



MODEL: RD053

- CE, LPCB, UL, FM & VdS approved
- Pendent (SSP)
- Brass, Chrome and paint finish
- Special RAL colours available on request
- Quick Response
- 3mm Bulb
- UK Manufactured



RAL Colour Match



Sprinkler Wrench
RDSPKSPANV2

PART NUMBER	DESCRIPTION	BOX QTY
Datasheet No. 4.52		
RDM053057P	½" SSP (pendent) brass sprinkler quick response (3mm bulb) K=115, 57 degrees	100
RDM053068P	½" SSP (pendent) brass sprinkler quick response (3mm bulb) K=115, 68 degrees	100
RDM053079P	½" SSP (pendent) brass sprinkler quick response (3mm bulb) K=115, 79 degrees	100
RDM053093P	½" SSP (pendent) brass sprinkler quick response (3mm bulb) K=115, 93 degrees	100
RDM053141P	½" SSP (pendent) brass sprinkler quick response (3mm bulb) K=115, 141 degrees	100
RDM053057C	½" SSP (pendent) chrome sprinkler quick response (3mm bulb) K=115, 57 degrees	100
RDM053068C	½" SSP (pendent) chrome sprinkler quick response (3mm bulb) K=115, 68 degrees	100
RDM053079C	½" SSP (pendent) chrome sprinkler quick response (3mm bulb) K=115, 79 degrees	100
RDM053093C	½" SSP (pendent) chrome sprinkler quick response (3mm bulb) K=115, 93 degrees	100
RDM053141C	½" SSP (pendent) chrome sprinkler quick response (3mm bulb) K=115, 141 degrees	100
RDM053057R9010	½" SSP (pendent) white sprinkler quick response (3mm bulb) K=115, 57 degrees	100
RDM053068R9010	½" SSP (pendent) white sprinkler quick response (3mm bulb) K=115, 68 degrees	100
RDM053079R9010	½" SSP (pendent) white sprinkler quick response (3mm bulb) K=115, 79 degrees	100
RDM053093R9010	½" SSP (pendent) white sprinkler quick response (3mm bulb) K=115, 93 degrees	100
RDM053141R9010	½" SSP (pendent) white sprinkler quick response (3mm bulb) K=115, 141 degrees	100



Cert/LPCB/ ref. 566d/01



MODEL: RD0054

- CE, LPCB, UL, FM & VdS approved
- Upright (SSU)
- Brass, Chrome and paint finish
- Special RAL colours available on request
- Standard Response
- 5mm Bulb
- UK Manufactured



RAL Colour Match



Sprinkler Wrench
RDSPKSPANV2

PART NUMBER	DESCRIPTION	BOX QTY
Datasheet No. 4.52		
RDM054057P	½" SSU (upright) brass sprinkler standard response (5mm bulb) K=115, 57 degrees	100
RDM054068P	½" SSU (upright) brass sprinkler standard response (5mm bulb) K=115, 68 degrees	100
RDM054079P	½" SSU (upright) brass sprinkler standard response (5mm bulb) K=115, 79 degrees	100
RDM054093P	½" SSU (upright) brass sprinkler standard response (5mm bulb) K=115, 93 degrees	100
RDM054141P	½" SSU (upright) brass sprinkler standard response (5mm bulb) K=115, 141 degrees	100
RDM054057C	½" SSU (upright) chrome sprinkler standard response (5mm bulb) K=115, 57 degrees	100
RDM054068C	½" SSU (upright) chrome sprinkler standard response (5mm bulb) K=115, 68 degrees	100
RDM054079C	½" SSU (upright) chrome sprinkler standard response (5mm bulb) K=115, 79 degrees	100
RDM054093C	½" SSU (upright) chrome sprinkler standard response (5mm bulb) K=115, 93 degrees	100
RDM054141C	½" SSU (upright) chrome sprinkler standard response (5mm bulb) K=115, 141 degrees	100
RDM054057R9010	½" SSU (upright) white sprinkler standard response (5mm bulb) K=115, 57 degrees	100
RDM054068R9010	½" SSU (upright) white sprinkler standard response (5mm bulb) K=115, 68 degrees	100
RDM054079R9010	½" SSU (upright) white sprinkler standard response (5mm bulb) K=115, 79 degrees	100
RDM054093R9010	½" SSU (upright) white sprinkler standard response (5mm bulb) K=115, 93 degrees	100
RDM054141R9010	½" SSU (upright) white sprinkler standard response (5mm bulb) K=115, 141 degrees	100



Cert/LPCB/ ref. 566d/02



MODEL: RD0055

- CE, LPCB, UL, FM & VdS approved
- Upright (SSU)
- Brass, Chrome and paint finish
- Special RAL colours available on request
- Quick Response
- 3mm Bulb
- UK Manufactured



RAL Colour Match



Sprinkler Wrench
RDSPKSPANV2

PART NUMBER	DESCRIPTION	BOX QTY
Datasheet No. 4.52		
RDM055057P	½" SSU (upright) brass sprinkler quick response (3mm bulb) K=115, 57 degrees	100
RDM055068P	½" SSU (upright) brass sprinkler quick response (3mm bulb) K=115, 68 degrees	100
RDM055079P	½" SSU (upright) brass sprinkler quick response (3mm bulb) K=115, 79 degrees	100
RDM055093P	½" SSU (upright) brass sprinkler quick response (3mm bulb) K=115, 93 degrees	100
RDM055141P	½" SSU (upright) brass sprinkler quick response (3mm bulb) K=115, 141 degrees	100
RDM055057C	½" SSU (upright) chrome sprinkler quick response (3mm bulb) K=115, 57 degrees	100
RDM055068C	½" SSU (upright) chrome sprinkler quick response (3mm bulb) K=115, 68 degrees	100
RDM055079C	½" SSU (upright) chrome sprinkler quick response (3mm bulb) K=115, 79 degrees	100
RDM055093C	½" SSU (upright) chrome sprinkler quick response (3mm bulb) K=115, 93 degrees	100
RDM055141C	½" SSU (upright) chrome sprinkler quick response (3mm bulb) K=115, 141 degrees	100
RDM055057R9010	½" SSU (upright) white sprinkler quick response (3mm bulb) K=115, 57 degrees	100
RDM055068R9010	½" SSU (upright) white sprinkler quick response (3mm bulb) K=115, 68 degrees	100
RDM055079R9010	½" SSU (upright) white sprinkler quick response (3mm bulb) K=115, 79 degrees	100
RDM055093R9010	½" SSU (upright) white sprinkler quick response (3mm bulb) K=115, 93 degrees	100
RDM055141R9010	½" SSU (upright) white sprinkler quick response (3mm bulb) K=115, 141 degrees	100



SPRINKLER ACCESSORIES

- Sprinkler spares cabinets
- Single escutcheons
- Two piece escutcheons
- Sprinkler guards
- Combined sprinkler guard and baffle plate
- Baffle plates

NOTE

SPECIAL RAL COLOURS FOR ESCUTCHEONS ARE AVAILABLE ON REQUEST

PART NUMBER	DESCRIPTION	BOX QTY
Datasheet No. 4.01, 4.02, 4.04, 4.06, 4.09, 4.55, 4.56		
RDESC1/21PCR9010	1 piece rosette, White RAL9010	500
RDES1/21PCC	1 piece rosette, 1/2" , Chrome	500
RDES1/22PCW9010	2 piece rosette, 1/2" , White RAL9010	200
RDES1/22PCC	2 piece rosette, 1/2" , Chrome	200
RDES2TW9010	2 piece rosette, White RAL9010 , threaded type	200
RDES3/41PCC	1 piece rosette 3/4" Chrome	500
RDES3/41PCW	1 piece rosette 3/4" White RAL9010	500
RDES3/42PCC	2 piece rosette, 3/4" Chrome	200
RDES3/42PCW	2 piece rosette, 3/4" White RAL9010	200
RDSPKSPANV2	Standard sprinkler Wrench to suit RD020, RD021, RD022, RD023, RD024 & RD025 sprinkler heads	1
RDSOCKETFQR	Sprinkler socket to suit RD101, RD102, RD105, RD107 & RD205 sprinkler heads	1
RDSOCKETFQR208	Sprinkler socket to suit RD207, RD208 sprinkler head	1
RDCRT100/200	Cap removal tool for RD100 & RD200 range	1
RDCAB12	Sprinkler Spares Cabinet, 12 heads	20
RDCAB24	Sprinkler Spares Cabinet, 24 heads	10
RDCAB36	Sprinkler Spares Cabinet, 36 heads	10

Special RAL colours for rosettes to match sprinkler heads are available on request



SPRINKLER GUARDS AND SHIELDS FOR SSP, SSU AND CUP SPRINKLERS

- Rapidrop Sprinkler Guard encases the sprinkler to protect it from physical damage.
- FM Approved Sprinkler Guard and Sprinkler Shields for SSU and SSP Sprinklers
- Sprinkler Guard with Baffle Plate for SSU Sprinklers
- Baffle plates for 15mm (1/2") and 20mm (3/4") SSP Sprinkler head
- Miniature Sprinkler Guard for use with most 15mm (1/2") and 20mm (3/4") SSU, SSP and CUP Sprinklers
- RAL colours available on request

PART NUMBER	DESCRIPTION	BOX QTY
Datasheet No. 4.54, 4.56		
RDSPRGUARDCFM	Sprinkler Guard to suit RD022, RD023, RD042, RD043, RD044, RD045 sprinkler heads, FM approved	100
RDSPRGUARD65C	Combined sprinkler guard 65mm with 100mm baffle plate for SSU sprinkler head * 58mm with 95mm baffle palat available on special request RDSPRGUARD82C	100
RDSPRGUARDC	Miniature sprinkler guard, 50mm to fit 1/2" and 3/4" * 60mm for 1/2" and 3/4" available on special request RDSPRGUARDCUK	200
RDBAFFSSP015FM	Sprinkler Shield (Baffle) suitable to suit RD022, RD023 sprinkler heads, FM Approved	200
RDBAFFSSP020FM	Sprinkler Shield (Baffle) suitable to suit RD042, RD043 sprinkler heads, FM approved	200
RDBAFFSSUFM	Sprinkler Shield (Baffle) suitable to suit RD044, RD045 sprinkler heads, FM approved	100
RDBAFFLE08315SSP	Baffle Plate for 1/2" (15mm) sprinklers, 83mm diameter	500
RDBAFF8326	Baffle Plate for 3/4" (20mm) sprinklers, 83mm diameter	500

Ordering Information		No approval	FM approved	
SSP	Baffle Plate	1/2"	RDBAFFLE08315SSP <i>Needs to be installed with a guard</i>	RDBAFFSSP015FM
		3/4"	RDBAFF8326G	RDBAFFSSP020FM
SSP + SSU	Guard	1/2"	RDSPRGUARDC	RDSPRGUARDCFM
		3/4"		
SSP + SSU	Guard and baffle assembly	1/2"	RDSPRGUARDC + RDBAFFLE08315SSP	RDSPRGUARDCFM + RDBAFFSSP015FM
		3/4"	RDSPRGUARDC + RDBAFF8326	RDSPRGUARDCFM + RDBAFFSSP020FM



SHIELDING CAPS FOR 1/2" AND 3/4" SPRINKLERS

- VdS Approved Shielding Cap for 1/2" and 3/4" Sprinkler
- Universal 110mm diameter
- Standard 165mm diameter
- For Double Sprinkler 165mm

PART NUMBER	DESCRIPTION	BOX QTY
Datasheet No. 4.57		
RDUNISHCAP	Shielding cap universal 110mm, 15mm (1/2") Chrome, VdS approved	1
RDSRSC020C	Shielding cap universal 110mm, 20mm (3/4") Chrome, VdS approved	1
RDSRSCST015C	Shielding cap standard 165mm, 15mm (1/2") Chrome, VdS approved	1
RDSRSCST020C	Shielding cap standard 165mm, 20mm (3/4") Chrome, VdS approved	1
RDSRSCA015C	Shielding cap for double spr 165mm, 15mm (1/2") Chrome, VdS approved	1
RDSRSCA020C	Shielding cap for double spr 165mm, 20mm (3/4") Chrome, VdS approved	1



Commercial Sprinklers Comparison Chart



Model		RD105	RD107	RD103	RD101	RD102	
							
K Factor	Metric	K80	K80	K80	K80	K80	
	Imperial	K5.6	K5.6	K5.6	K5.6	K5.6	
Frame Thread		1/2" NPT	1/2" NPT	1/2" NPT	1/2" NPT	1/2" NPT	
Sprinkler Type		Concealed Pendent	Concealed Pendent	Flush Pendent	Flush Pendent	Flush Pendent	
Heat Responsive Element		Solder Link	Solder Link	Solder Link	Solder Link	Solder Link	
Response Type		Quick (UL) Standard* (FM)	Standard*	Quick	Quick	Quick	
Operating Temperature		Sprinkler: 72°C (162°F) Cover Plate: 60°C (140°F)	Sprinkler: 96°C (205°F) Cover Plate: 72°C (162°F) (UL only)	72°C (162°F)	72°C (162°F) 96°C (205°F)	72°C (162°F) 96°C (205°F)	72°C (162°F)
Approvals							
Cover Plate Size		N/A	N/A	N/A	ø60mm	ø60mm	



Cert/LPCB/ ref. 5661/01



MODEL: RD107 (LPCB, CE) / RD105 (FM, UL)

- Concealed type.
- Quick & Standard response.
- Standard coverage K80 (5.6) 1/2" NPT.
- Compact Size, Lay flat 60mm cover plate the smallest approved concealed on the market.
- Standard White, Black & Chrome available from Stock.
- Optional RAL colour cover plates & wood grain finishes.
- Fusible Solder Link, No glass debris when activated.
- Protective cap with the ceiling label and tolerance Vertical height adjustment 9.5mm (3/8 inch).
- Cap removal tool, ensures the cap is pulled straight down.

PART NUMBER	DESCRIPTION	BOX QTY
Datasheet No. 4.20 (RD107), 4.19 (RD105)		
RD107CNEU162	RD107 commercial concealed sprinkler head, LPCB / CE approved	100
RDCNCOV140R9010	RD107 cover plate, white RAL9010 (60mm Diameter) to match above	100
RD105CNPQR162	RD105 commercial concealed sprinkler head, FM / UL approved	100
RDCNCOV140R9003	RD105 cover plate, white RAL9003 (60mm Diameter) to match above	100
RDSOCKETFQR	Installation socket for RD107 & RD105	1
RDCRT100/200	Cap removal tool for RD101, RD107, RD105	1

Special RAL colour and wood grain cover plates available on request



Cert/LPCB/ ref. 566e/01



MODEL: RD101 & RD103

- RD101 LPCB and CE Approved
- RD103 UL Approved
- Flush pendent life safety sprinkler
- White, chrome plated & black finish
- Special RAL colours available on request



RAL Colour Match



Sprinkler Wrench
RDSOCKETFQR

PART NUMBER	DESCRIPTION	BOX QTY
Datasheet No. 4.12		
RD101FQREU072W	RD101 Flush Pendent Sprinkler head c/w white RAL9003 escutcheon, LPCB, CE	100
RDESCFR9003	RD101 Escutcheon, white RAL9003	100
RD101FQREU072W2	RD101 Flush Pendent Sprinkler head c/w white RAL9010 escutcheon, LPCB, CE	100
RDESCFW9010	RD101 Escutcheon, white RAL9010	100
RD101FQREU072BK	RD101 Flush Pendent Sprinkler head c/w Black escutcheon, LPCB, CE	100
RDESCFR9005	RD101 Escutcheon, Black RAL9010	100
RD101FQREU072C	RD101 Flush Pendent Sprinkler head c/w Chrome escutcheon, LPCB, CE	100
RDESCFC	RD101 Escutcheon, Chrome RAL9010	100
RD103FQR162W	RD103 Flush Pendent Sprinkler head c/w white RAL9003 escutcheon, UL	100
RDESCFR9003	RD103 Escutcheon, white RAL9003	100
RD103FQR162C	RD103 Flush Pendent Sprinkler head c/w Chrome escutcheon, UL	100
RDESCFC	RD103 Escutcheon, Chrome RAL9010	100
RDSOCKETFQR	Installation socket for RD101, RD107, RD105, RD205	1
RDCRT100/200	Cap removal tool for RD101, RD107, RD105, RD205	1



MODEL: RD102

- LPCB / CE Approved
- Flush pendent life safety sprinkler
- White, chrome plated & black finish
- Special RAL colours available on request



RAL Colour Match



**Sprinkler Wrench
RDSOCKETFQR**

PART NUMBER	DESCRIPTION	BOX QTY
Datasheet No. 4.27		
RD102FP5072R9010	RD102 Flush Pendent Sprinkler head c/w white RAL9010 escutcheon, LPCB / CE approved	100
RDESCFW9010	RD102 Escutcheon, white RAL9010	100
RD102FP5072R9005	RD102 Flush Pendent Sprinkler head c/w black RAL9005 escutcheon, LPCB / CE approved	100
RDESCFR9005	RD102 Escutcheon, black RAL9005	100
RD102FP5072C	RD102 Flush Pendent Sprinkler head c/w Chrome escutcheon, LPCB / CE approved	100
RDESCFC	RD102 Escutcheon, Chrome RAL9010	100
RDSOCKETFQR	Installation Socket for RD102	1



Residential Sprinklers Comparison Chart



Model		RD208	RD207	RD205	RD203	RD201
						
K Factor	Metric	K70	K43	K70	K60	K60
	Imperial	K4.9	K3.0	K4.9	K4.2	K4.2
Frame Thread		1/2" NPT	1/2" NPT	1/2" NPT	1/2" NPT	1/2" NPT
Sprinkler Type		Concealed Pendent	Concealed Pendent	Concealed Pendent	Flush Horizontal Side-Wall	Flush Pendent
Heat Responsive Element		Solder Link	Solder Link	Solder Link	Solder Link	Solder Link
Response Type		Quick	Quick	Quick	Quick	Quick
Operating Temperature		Sprinkler: 72°C (162°F) Cover Plate: 60°C (140°F)	Sprinkler: 79°C (175°F) Cover Plate: 72°C (162°F)	Sprinkler: 72°C (162°F) Cover Plate: 60°C (140°F)	Sprinkler: 79°C (175°F) Cover Plate: 72°C (162°F)	Sprinkler: 72°C (162°F) Cover Plate: 60°C (140°F)
Approvals						
Cover Plate Size		ø68mm ø83mm 68mm x 68mm square	ø68mm ø83mm 68mm x 68mm square	ø60mm	N/A	N/A



MODEL: RD201, RD203, RD205, RD207, RD208

- UL Listed
- Concealed type
- White and chrome plated finish
- Special RAL colours available on request
- BS EN 12845:2015 Compliant



RAL Colour Match



Sprinkler Wrench

PART NUMBER	DESCRIPTION	BOX QTY
Datasheet No. 4.16 (RD205), 4.26 (RD208), 4.24 (RD207), 4.14 (RD201), 4.15 (RD203)		
RD205CNRES162W	RD205 K4.9 (70.6) Residential Concealed Sprinkler c/w white cover plate, UL Listed	100
RDCNCOV140R9003	RD205 cover plate, white RAL9003 (60mm diameter)	100
RDCNCOV140C	RD205 cover plate, chrome (60mm diameter)	10
RDSOCKETFQR	Installation socket for RD101, RD107, RD105, RD205	100
RD208CNRES162	RD208 K4.9 (70.6) Residential Concealed Sprinkler c/w 68mm OR 83mm white cover plate, UL Listed	50
RDRESCV140R9003	RD208 cover plate, white RAL9003 (68mm diameter)	100
RDRESCV140R900383	RD208 cover plate, white RAL9003 (83mm diameter)	50
RDCAPRT208	RD208 and RD207 Cap Removal Tool (RC Model)	1
RD207CNRES162W	RD207 Low Flow K3.0 (43) Residential Concealed Sprinkler c/w 68mm OR 83mm white cover plate, UL Listed	50
RDRESCV140R9003	RD207 cover plate, white RAL9003 (68mm diameter)	100
RDRESCV140R900383	RD207 cover plate, white RAL9003 (83mm diameter)	50
RDSOCKETFQR208	Sprinkler socket to suit RD208, RD207 sprinkler head	1
RD3002T016	3/8 square drive ratchet to suit sprinkler installation sockets	1
RD201ZNRES162W	RD201 K4.2 (60) Residential Flush Pendant c/w rosette	50
RDESC201R9003	Rosette to suit RD201, white RAL9003	50
RD203HFRES162W	RD203 K4.2 (60) Residential Flush Pendant side-wall c/w rosette	50
RDESC203R9003	Rosette to suit RD203, white RAL9003	50



Cert/LPCB/ ref. 566b/01-03
Cert/LPCB/ ref. 566c/01



WET ALARM MODEL B, D, E

- CE, LPCB, UL, FM Approved
- Available in sizes 80mm (3") up to 200 mm (8")
- Flanged, grooved or flanged-grooved connections
- Pre trimmed to FM specification (LPCB on request)
- Set includes:
 - Alarm valve and trim
 - 2 gauges
 - Pressure switch EPS10-2
 - Retard chamber
- Optional water motor alarm gong

PART NUMBER	DESCRIPTION	BOX QTY
Datasheet No, 5.01, 5.02, 5.03		
RDAVB080AF	3" Wet alarm valve, Model B, PN16 flanged c/w FM trim, pressure switch (RDEPS10-2) and retard chamber (RDRETARDMODE)	1
RDAVB100AF	4" Wet alarm valve, Model B, PN16 flanged c/w FM trim, pressure switch (RDEPS10-2) and retard chamber (RDRETARDMODE)	1
RDAVB150AF	6" Wet alarm valve, Model B, PN16 flanged c/w FM trim, pressure switch (RDEPS10-2) and retard chamber (RDRETARDMODE)	1
RDAVB200AF	8" Wet alarm valve, Model B, PN16 flanged c/w FM trim, pressure switch (RDEPS10-2) and retard chamber (RDRETARDMODE)	1
RDAVB114AF	4" Wet alarm valve, Model E, groove / groove c/w FM trim, pressure switch (RDEPS10-2) and retard chamber (RDRETARDMODE)	1
RDAVB168AF	6" Wet alarm valve, Model E, groove / groove c/w FM trim, pressure switch (RDEPS10-2) and retard chamber (RDRETARDMODE) (European market 168mm o/d)	1
RDAVB165AF	6" Wet alarm valve, Model E, groove / groove c/w FM trim pressure switch (RDEPS10-2) and retard chamber (RDRETARDMODE) (Outside diameter 165mm only for UK market)	1
RDAVB114FGAF	4" Wet alarm valve, Model D, PN16 flanged / grooved c/w FM trim, pressure switch (RDEPS10-2) and retard chamber (RDRETARDMODE)	1
RDAVB168FGAF	6" Wet alarm valve, Model D, PN16 flanged / grooved c/w FM trim, pressure switch (RDEPS10-2) and retard chamber (RDRETARDMODE) (European market 168mm o/d)	1
RDAVB219FGAF	8" Wet alarm valve, Model D, PN16 flanged / grooved c/w FM trim, pressure switch (RDEPS10-2) and retard chamber (RDRETARDMODE)	1



Cert/LPCB/ ref. 566b/01-03
Cert/LPCB/ ref. 566c/01



WET ALARM VALVE ACCESSORIES

- Wet alarm valve servicing kit
- Alarm Gong
- Retard chamber
- Pressure switches and pressure gauges

PART NUMBER	DESCRIPTION	BOX QTY
Datasheet No. 2.03, 2.04, 5.04, 5.09, 5.13, 6.01		
RDAVB080GASKIT	3" wet alarm valve servicing kit. (Kit includes; Face Cover Gasket, Clapper Rubber Gasket and Sealing Ring)	1
RDAVB100GASKIT	4" wet alarm valve servicing kit. (Kit includes; Face Cover Gasket, Clapper Rubber Gasket and Sealing Ring)	1
RDAVB150GASKIT	6" wet alarm valve servicing kit. (Kit includes; Face Cover Gasket, Clapper Rubber Gasket and Sealing Ring)	1
RDAVB200GASKIT	8" wet alarm valve servicing kit. (Kit includes; Face Cover Gasket, Clapper Rubber Gasket and Sealing Ring)	1
RDRETARDMODE	Retard Chamber, FM, UL, LPCB, CE	1
RDWMGE	Water motor alarm gong, FM, UL, LPCB, CE	1
RDGS36	Extended alarm gong spindle, 36" (900mm approx)	1
RDEPS10-2	EPS10-2 Pressure Switch, FM, UL, VdS	1
RDEPS40-2	EPS40-2 Pressure switch, FM, UL, VdS	1
RDPRESSGAUGE16RD	0 - 16 bar Glycerin filled pressure Gauge, 100 mm diameter, 3/8" connection	1
RDPRESSGAUGE12	-1 to +2 bar Glycerin filled pressure Gauge, 100 mm diameter, 3/8" connection	1
RDPRESSGAUGE25	0 - 25 bar Glycerin filled pressure Gauge, 100 mm diameter, 3/8" connection	1
RDPRESSGAUGE40	0 - 40 bar Glycerin filled pressure Gauge, 100 mm diameter, 3/8" connection	1
RDPRESSGAUGEFM	0 - 20 bar Dry pressure Gauge, 100mm, 1/4" NPT, dual scale, FM	1



Cert/LPCB/ ref. 1357h/01
 Cert/LPCB/ ref. 1357h/02
 Cert/LPCB/ ref. 1357g
 Cert/LPCB/ ref. 085a/01



SWITCHES & GAUGES

- Flow switches CE, LPCB, UL, FM, VdS
- Pressure Switch FM approved
- Pressure Switch LPCB approved
- OSY and PIV Gate Valve limit Switch
- BS5163 gate valve limit switch

PART NUMBER	DESCRIPTION	BOX QTY
Datasheet No. 2.03, 2.04, 2.07, 2.09		
RDWFDT	1", 1 ¼", 1 ½" Flow Switch (residential sprinkler systems), FM, UL	1
RDWFD20EN	2" (50mm) System Sensor water flow detector (flow switch), FM, UL, VdS, LPCB	1
RDWFD25EN	2 ½" (65mm) System Sensor water flow detector (flow switch), FM, UL, VdS, LPCB	1
RDWFD30EN	3" (80mm) System Sensor water flow detector (flow switch), FM, UL, VdS, LPCB	1
RDWFD40EN	4" (100mm) System Sensor water flow detector (flow switch), FM, UL, VdS, LPCB	1
RDWFD50EN	5" (125mm) System Sensor water flow detector (flow switch), FM, UL	1
RDWFD60EN	6" (150mm) System Sensor water flow detector (flow switch), FM, UL, VdS, LPCB	1
RDWFD80EN	8" (200mm) System Sensor water flow detector (flow switch), FM, UL, VdS, LPCB	1
RDOSY2	Supervisory Switch for OS&Y Gate valve FM, UL	1
RDPIBV2	Supervisory Switch for PIV Gate Valve FM, UL	1
RDPSP1	Supervisory Switch for handwheel operated valve above 12" FM, UL	1
RDEPS120-1	EPS 120-1 Pressure Switch FM, UL, VdS	1
RDEPS10-2	EPS 10-2 Pressure Switch (double SPDT switches) FM, UL, VdS	1
RDEPS40-2	EPS 40-2 Pressure Switch (double SPDT switches) FM, UL, VdS	1
RDPRESSGAUGEFM	Dry Pressure Gauge, FM	1
RDPRESSGAUGE16	0 - 16 Glycerin filled Bar Pressure Gauge	1
RDPRESSGAUGE12	-1 to +2 bar Glycerin filled pressure Gauge, 100 mm diameter, 3/8" connection	1
RDPRESSGAUGE25	0 - 25 Bar Glycerin filled pressure gauge	1
RDPRESSGAUGE40	0 - 40 Bar Glycerin filled pressure gauge	1
RDLOSSCON	No Loss connector to suit 40 bar gauges	1



RESIDENTIAL SPRINKLER SYSTEM EQUIPMENT

- Wras Approved Double Check Valve
- Light weight compact double check valves for class 3 contamination risks
- Residential and domestic alarm & test valve assembly
- Lockable handle
- 1" or 1 ¼" full bore test valve
- Maximum working pressure
- Bespoke versions available which include CPVC adapters, monitored versions and double check valves.

PART NUMBER	DESCRIPTION	BOX QTY
Datasheet No. 1.55, 7.06, 7.08		
RDDCV25WRAS	1" (25mm) WRAS approved double check valve	1
RDDCV32WRAS	1 ¼" (32mm) WRAS approved double check valve	1
RDDCV40WRAS	1 ½" (40mm) WRAS approved double check valve	1
RDRESIVALVESET25DP	1" (25mm) Dual Port, Residential valve set c/w locking ball valve & pressure gauge"	1
RDRESIVALVESET32DP	1 ¼" (32mm) Dual Port, Residential valve set c/w locking ball valve & pressure gauge"	1
RDRESIVALVESET40DP	1 ½" (40mm) Dual Port, Residential valve set c/w locking ball valve & pressure gauge	1
RDWFDT	Residential Flow Switch (System Sensor c/w timer delay)	1
DRS021G	Residential Flow Switch (Compact unit, no timer delay) complete with paddles to suit 25mm, 32mm and 40mm valve sets	1
RDPAD40	Paddle for DRS012G to suit 40mm resi valve set	1
RD4236-010NPT	1" CPVC adaptor	1
RD4236-012	1 ¼" CPVC adaptor	1
RD4236-015NPT	1 ½" CPVC adaptor	1

	27.5 Bar	12 Bar	20.7 Bar* *VdS 16 Bar	20.7 Bar
Threaded		RD202 		
Grooved	RD221-400 		RD216 	RD204
Wafer	RD220-400 		RD215 	RD203

FM Approved

UL Listed

VdS

Gost

APSAD

Rapidrop Butterfly Valves are supplied with the following:

- Hand wheel.
- Gearbox.
- Flag.
- 1m flying lead (all except RD202).
- EPDM seat faces for the wafer models.
- Stainless steel shaft.



RD204 & RD203

- APSAD Approved
- Grooved and Wafer type
- Working pressure 20.7 Bar
- Gearbox operated with factory installed double tamper switches
- 1 meter flying lead
- Can be monitored either on fully closed or fully open position

PART NUMBER	DESCRIPTION	BOX QTY
Datasheet No. 1.27, 1.28		
RD204-050APSAD	2" (50mm) Butterfly valve, grooved c/w switch,	1
RD204-076APSAD	2 ½" (65mm) Butterfly valve, grooved c/w switch	1
RD204-080APSAD	3" (80mm) Butterfly valve, grooved c/w switch	1
RD204-100APSAD	4" (100mm) Butterfly valve, grooved c/w switch	1
RD204-168APSAD	6" (168mm) Butterfly valve, grooved c/w switch	1
RD204-150APSAD	6" (150mm) Butterfly valve, grooved c/w switch (Outside diameter 165mm only for UK market)	1
RD204-200APSAD	8" (200mm) Butterfly valve grooved c/w switch	1
RD204-250APSAD	10" (250mm) Butterfly valve grooved c/w switch	1
RD204-300APSAD	12" (300mm) Butterfly valve grooved c/w switch	1
RD203-050APSAD	2" (50mm) Butterfly valve, wafer type c/w switch	1
RD203-065APSAD	2 ½" (65mm) Butterfly valve, wafer type c/w switch	1
RD203-080APSAD	3" (80mm) Butterfly valve, wafer type c/w switch	1
RD203-100APSAD	4" (100mm) Butterfly valve, wafer type c/w switch	1
RD203-150APSAD	6" (150mm) Butterfly valve, wafer type c/w switch	1
RD203-200APSAD	8" (200mm) Butterfly valve wafer type c/w switch	1
RD203-250APSAD	10" (250mm) Butterfly valve wafer type c/w switch	1
RD203-300APSAD	12" (300mm) Butterfly valve wafer type c/w switch	1
RD203-350APSAD	14" (350mm) Butterfly valve wafer type c/w switch	1



RD216 & RD215

- FM, UL, VdS approved
- Grooved and Wafer type
- Working pressure 20 Bar
- Gearbox operated with factory installed tamper switches
- 1 meter flying lead

PART NUMBER	DESCRIPTION	BOX QTY
Datasheet No. 1.63, 1.64		
RD216-050FL	2" (50mm) Butterfly valve, grooved c/w switch, (60.3mm o/d), 20 bar, FM, UL, VdS	1
RD216-065FL	2 ½" (65mm) Butterfly valve, grooved c/w switch, (76mm o/d), 20 bar, FM, UL, VdS	1
RD216-080FL	3" (80mm) Butterfly valve, grooved c/w switch, (88.9mm o/d), 20 bar, FM, UL, VdS	1
RD216-100FL	4" (100mm) Butterfly valve, grooved c/w switch, (114.3mm o/d), 20 bar, FM, UL, VdS	1
RD216-125FL	5" (115mm) Butterfly valve, grooved c/w switch, (139.7mm o/d), 20 bar, FM, UL, VdS	1
RD216-168FL	6" (168mm) Butterfly valve, grooved c/w switch, (168mm o/d), 20 bar, FM, UL, VdS	1
RD216-150FL	6" (150mm) Butterfly valve, grooved c/w switch, (165.1mm o/d), 20 bar, FM, UL, VdS (Outside diameter 165mm only for UK market)	1
RD216-200FL	8" (200mm) Butterfly valve, grooved c/w switch, (219.1mm o/d), 20 bar, FM, UL, VdS	1
RD216-250FL	10" (250mm) Butterfly valve, grooved c/w switch, (273mm o/d), 20 bar, FM, UL, VdS	1
RD216-300FL	12" (300mm) Butterfly valve, grooved c/w switch, (323.9mm o/d), 20 bar, FM, UL, VdS	1
RD215-050FL	2" (50mm) Butterfly valve, wafer type, c/w switch, 20 bar, FM, UL, VdS	1
RD215-065FL	2 ½" (65mm) Butterfly valve, wafer type, c/w switch, 20 bar, FM, UL, VdS	1
RD215-080FL	3" (80mm) Butterfly valve, wafer type, c/w switch, 20 bar, FM, UL, VdS	1
RD215-100FL	4" (100mm) Butterfly valve, wafer type, c/w switch, 20 bar, FM, UL, VdS	1
RD215-125FL	5" (115mm) Butterfly valve, wafer type, c/w switch, 20 bar, FM, UL, VdS	1
RD215-150FL	6" (150mm) Butterfly valve, wafer type, c/w switch, 20 bar, FM, UL, VdS	1
RD215-200FL	8" (200mm) Butterfly valve, wafer type, c/w switch, 20 bar, FM, UL, VdS	1
RD215-250FL	10" (250mm) Butterfly valve, wafer type, c/w switch, 20 bar, FM, VdS	1
RD215-300FL	12" (300mm) Butterfly valve, wafer type, c/w switch, 20 bar, FM, VdS	1



RD216 & RD215 WITH MOUNTING BRACKET

- FM, UL, VdS approved
- Grooved and Wafer type
- Working pressure 20 Bar
- Gearbox operated with factory installed tamper switches
- 1 meter flying lead
- Comes with mounting bracket
- External Switch to be ordered separately (product code RD215/216SK)
- Possibility of monitoring as open or closed

PART NUMBER	DESCRIPTION	BOX QTY
Datasheet No. 1.84		
RD216-050FLMB	2" (50mm) Fig.216 Butterfly valve with mounting bracket, grooved, (60.3mm o/d), FM, UL, VdS	1
RD216-065FLMB	2 ½" (65mm) Fig.216 Butterfly valve with mounting bracket, grooved, (76.1mm o/d), FM, UL, VdS	1
RD216-080FLMB	3" (80mm) Fig.216 Butterfly valve with mounting bracket, grooved, (88.9mm o/d), FM, UL, VdS	1
RD216-100FLMB	4" (100mm) Fig.216 Butterfly valve with mounting bracket, grooved, (114.3mm o/d), FM, UL, VdS	1
RD216-125FLMB	5" (125mm) Fig.216 Butterfly valve with mounting bracket, grooved, (139.7mm o/d), FM, UL, VdS	1
RD216-168FLMB	6" (150mm) Fig.216 Butterfly valve with mounting bracket, grooved, (168.3mm o/d), FM, UL, VdS	1
RD216-150FLMB	6" (150mm) Fig.216 Butterfly valve with mounting bracket, grooved, (165.1mm o/d), FM, UL, VdS (Outside diameter 165mm only for UK market)	1
RD216-200FLMB	8" (200mm) Fig.216 Butterfly valve with mounting bracket, grooved, (219.1mm o/d), FM, UL, VdS	1
RD216-250FLMB	10" (250mm) Fig.216 Butterfly valve with mounting bracket, grooved, (273.0mm o/d), FM, UL, VdS	1
RD216-300FLMB	12" (300mm) Fig.216 Butterfly valve with mounting bracket, grooved, (323.9mm o/d), FM, UL, VdS	1
RD215-050FLMB	2" (50mm) Fig.215 Butterfly valve with mounting bracket, wafer type, FM, UL, VdS	1
RD215-065FLMB	2 ½" (65mm) Fig.215 Butterfly valve with mounting bracket, wafer type, FM, UL, VdS	1
RD215-080FLMB	3" (80mm) Fig.215 Butterfly valve with mounting bracket, wafer type, FM, UL, VdS	1
RD215-100FLMB	4" (100mm) Fig.215 Butterfly valve with mounting bracket, wafer type, FM, UL, VdS	1
RD215-125FLMB	5" (125mm) Fig.215 Butterfly valve with mounting bracket, wafer type, FM, UL, VdS	1
RD215-150FLMB	6" (150mm) Fig.215 Butterfly valve with mounting bracket, wafer type, FM, UL, VdS	1
RD215-200FLMB	8" (200mm) Fig.215 Butterfly valve with mounting bracket, wafer type, FM, UL, VdS	1
RD215-250FLMB	10" (250mm) Fig.215 Butterfly valve with mounting bracket, wafer type, FM, UL, VdS	1
RD215-300FLMB	12" (300mm) Fig.215 Butterfly valve with mounting bracket, wafer type, FM, UL, VdS	1
RD215/216SK	Monitor switch for 215/216 butterfly valve with mounting bracket	1



RD202

- FM, UL approved
- Threaded type
- Working pressure 12 Bar
- Gearbox operated with factory installed tamper switches

PART NUMBER	DESCRIPTION	BOX QTY
Datasheet No. 1.62		
RD202-025	1" (25mm) Monitored Butterfly Valve	1
RD202-032	1 ¼" (32mm) Monitored Butterfly Valve	1
RD202-040	1 ½" (40mm) Monitored Butterfly Valve	1
RD202-050	2" (50mm) Monitored Butterfly Valve	1



117FF (FLANGE PN16)

- FM, UL, VdS Approved
- Conforms to AWWA C509
- Non shock working pressure:
20.7 bar / 300 psi (sizes 2 ½" up to 10")
- Non shock working pressure:
17.2 bar / 250 psi (sizes 12")
- Ductile iron body
- Position indicator included
- Monitor switch to be ordered seperately

PART NUMBER	DESCRIPTION	BOX QTY
Datasheet No. 1.59		
RD117FF050	2" (50mm) NRS Gate Valve, PN16 flanged, model 104, 20 bar rated, FM, UL, VdS	1
RD117FF065	2 ½" (65mm) NRS Post Ind Valve, PN16 flanged, model 104, 20 bar rated, FM, UL, VdS	1
RD117FF080	3" (80mm) NRS Gate Valve, PN16 flanged, model 104, 20 bar rated, FM, UL, VdS	1
RD117FF100	4" (100mm) NRS Post Ind Valve, PN16 flanged, model 104, 20 bar rated, FM, UL, VdS	1
RD117FF150	6" (150mm) NRS Gate Valve, PN16 flanged, model 104, 20 bar rated, FM, UL, VdS	1
RD117FF200	8" (200mm) NRS Gate Valve, PN16 flanged, model 104, 20 bar rated, FM, UL, VdS	1
RD117FF250	10" (250mm) NRS Post Ind Valve, PN16 flanged, model 104, 20 bar rated, FM, UL, VdS	1
RD117FF300	12" (300mm) NRS Gate Valve, PN16 flanged, model 104, 16 bar rated, FM, UL, VdS	1
RDGVLSKIT117	Monitor switch kit to suit RD117 gate valves	1



112 (FLANGE PN16)

- Hand wheel operated non-rising stem BS 5163
- BS 5163 Type A, BS EN 1074
- Open / Shut position Indicator
- Face to face dimension in accordance with BS5163
- Flange drilling in accordance with BS EN 1092 PN16 raised face
- Fitted anti tamper switch
- Optional ½" BSP Plugged tapping

PART NUMBER	DESCRIPTION	BOX QTY
Datasheet No. 1.69, 2.11		
RD112FF050	2" BS5163 gate valve, PN16 Flange, 16 bar rated	1
RD112FF065	2 ½" BS5163 gate valve, PN16 Flange, 16 bar rated	1
RD112FF080	3" BS5163 gate valve, PN16 Flange, 16 bar rated	1
RD112FF100	4" BS5163 gate valve, PN16 Flange, 16 bar rated	1
RD112FF150	6" BS5163 gate valve, PN16 Flange, 16 bar rated	1
RD112FF200	8" BS5163 gate valve, PN16 Flange, 16 bar rated	1
RD112FF250	10" BS5163 gate valve, PN16 Flange, 16 bar rated	1
RD112FF300	12" BS5163 gate valve, PN16 Flange, 16 bar rated	1
RD112FF350	14" BS5163 gate valve, PN16 Flange, 16 bar rated	1
RD112FF400	16" BS5163 gate valve, PN16 Flange, 16 bar rated	1
RD112FF450	18" BS5163 gate valve, PN16 Flange, 16 bar rated	1
RD112FF500	20" BS5163 gate valve, PN16 Flange, 16 bar rated	1
RDBIGGYR112	Monitor switch kit to suit RD112	1
RDGVLKIT400	Limit Switch for Gate Valves 16"	1



103FF (FLANGE PN16) & 103GG (GROOVED)

- OS&Y Resilient Wedge Gate Valve
- UL/FM Approved
- Conforms to AWWA C509
- Non shock working pressure:
20.7 bar / 300 psi (sizes 2 ½" up to 10")
- Non shock working pressure:
17.2 bar / 250 psi (sizes 12")
- Ductile iron body
- Monitor switch (RDOSY2) to be ordered separately

PART NUMBER	DESCRIPTION	BOX QTY
Datasheet No. 1.09, 1.19		
RD103FF065	2 ½" (65mm) OS&Y Gate Valve, PN16 flanged model 103, 20 bar rated, FM, UL	1
RD103FF080	3" (80mm) OS&Y Gate Valve, PN16 flanged, model 103, 20 bar rated, FM, UL	1
RD103FFRD100	4" (100mm) OS&Y Gate Valve, PN16 flanged, model 103, 20 bar rated, FM, UL	1
RD103FF150	6" (150mm) OS&Y Gate Valve, PN16 flanged, model 103, 20 bar rated, FM, UL	1
RD103FF200	8" (200mm) OS&Y Gate Valve, PN16 flanged, model 103, 20 bar rated, FM, UL	1
RD103FF250	10" (250mm) OS&Y Gate Valve, PN16 flanged, model 103, 20 bar rated, FM, UL	1
RD103FF300	12" (300mm) OS&Y Gate Valve, PN16 flanged, model 103, 6 bar rated, FM, UL	1
RD103FF350	14" (350mm) OS&Y Gate Valve, PN16 flanged, model 103, 16 bar rated, FM, UL	1
RD103FF400	16" (400mm) OS&Y Gate Valve, PN16 flanged, model 103, 16 bar rated, FM, UL	1
RD103GG076	2 ½" (65mm) OS&Y Gate Valve, grooved, model 103, 20 bar rated, FM, UL	1
RD103GG080	3" (80mm) OS&Y Gate Valve, grooved, model 103, 20 bar rated, FM, UL	1
RD103GGRD100	4" (100mm) OS&Y Gate Valve, grooved, model 103, 20 bar rated, FM, UL	1
RD103GG168	6" (168mm) OS&Y Gate Valve, grooved, model 103, 20 bar rated, FM, UL	1
RD103GG150	6" (150mm) OS&Y Gate Valve, grooved, model 103, 20 bar rated, FM, UL (Outside diameter 165mm only for UK market)	1
RD103GG200	8" (200mm) OS&Y Gate Valve, grooved, model 103, 20 bar rated, FM, UL	1
RD103GG250	10" (250mm) OS&Y Gate Valve, grooved, model 103, 20 bar rated, FM, UL	1
RD103GG300	12" (300mm) OS&Y Gate Valve, grooved, model 103, 16 bar rated, FM, UL	1
RD103GG350	14" (350mm) OS&Y Gate Valve, grooved, model 103, 16 bar rated, FM, UL	1
RD103GG400	16" (400mm) OS&Y Gate Valve, grooved, model 103, 16 bar rated, FM, UL	1
RDOSY2	Switch to suit OS&Y Gate Valves	1



PIV 104FF GATE VALVES 20 BAR (300 PSI) RATED

- Non-rising stem Resilient Wedge Gate Valve
- UL/FM Approved
- Conforms to AWWA C509
- Non stick cold working pressure:
20.7 bar / 300 psi (sizes 2 1/2" up to 10")
- Non shock cold working pressure:
17.2 bar / 250 psi (sizes 12")
- Ductile iron body
- To be used with vertical post indicator or wall post indicator
- Monitor switch (RDPIBV2) to be ordered separately

PART NUMBER	DESCRIPTION	BOX QTY
Datasheet No. 1.12, 1.13, 1.14, 2.12		
RD104FF065	2 1/2" (65mm) NRS Post Ind Valve, PN16 flanged, model 104, 20 bar rated, FM, UL	1
RD104FF080	3" (80mm) NRS Post Ind Valve, PN16 flanged, model 104, 20 bar rated, FM, UL	1
RD104FFRD100	4" (100mm) NRS Post Ind Valve, PN16 flanged, model 104, 20 bar rated, FM, UL	1
RD104FF150	6" (150mm) NRS Post Ind Valve, PN16 flanged, model 104, 20 bar rated, FM, UL	1
RD104FF200	8" (200mm) NRS Post Ind Valve, PN16 flanged, model 104, 20 bar rated, FM, UL	1
RD104FF250	10" (250mm) NRS Post Ind Valve, PN16 flanged, model 104, 20 bar rated, FM, UL	1
RD104FF300	12" (300mm) NRS Post Ind Valve, PN16 flanged, model 104, 16 bar rated, FM, UL	1
RD104FF350	14" (350mm) NRS Post Ind Valve, PN16 flanged, model 104, 16 bar rated, FM, UL	1
RD104FF400	16" (400mm) NRS Post Ind Valve, PN16 flanged, model 104, 16 bar rated, FM, UL	1
RDPOSTIND	Vertical Post Indicator Model 101, for sizes up to 12" (300mm)	1
RDPOSTINDL	Big Vertical Post Indicator Model 101, for sizes 14" (350mm) and 16" (400mm)	1
RDFPOSTWALL	Wall Post Indicator Model 102	1
RDPIBV2	Switch to suit monitoring switch for PIV Gate Valve	1



A61 NPT TEST & DRAIN VALVES

- Female NPT Thread
- Nominal pressure rated to 20.6 bar (300 PSI)
- Working temperature range of -10 / +120°C (14 / 250°F)
- Approval: UL Listed & FM Approved
- Available in 1", 1 ¼", 1 ½" and 2" pipe size connections
- Standard thread connection: NPT
- K Factors K80 (K5.6) to K360 (K25)
- Brass body with three position ball valve OFF / TEST / DRAIN
- Integral sight glass with acrylic see through windows

PART NUMBER	DESCRIPTION	BOX QTY
Datasheet No. 7.03		
RDA61Y001	1" (25mm) A61 Test & Drain Valve, 3/8" test orifice (K40 testing), FM, UL	1
RDA61Y003	1" (25mm) A61 Test & Drain Valve, 7/16" test orifice (K57 testing), FM, UL	1
RDA61Y005	1" (25mm) A61 Test & Drain Valve, 1/2" test orifice (K80 testing), FM, UL	1
RDA61Y015	1" (25mm) A61 Test & Drain Valve, 17/32" test orifice (K115 testing), FM, UL	1
RDA61Y009	1" (25mm) A61 Test & Drain Valve, 3/4" test orifice (K200 testing), FM, UL	1
RDA61Y002	1.1/4" (32mm) A61 Test & Drain Valve, 3/8" test orifice (K40 testing), FM, UL	1
RDA61Y004	1.1/4" (32mm) A61 Test & Drain Valve, 7/16" test orifice (K57 testing), FM, UL	1
RDA61Y006	1.1/4" (32mm) A61 Test & Drain Valve, 1/2" test orifice (K80 testing), FM, UL	1
RDA61Y016	1.1/4" (32mm) A61 Test & Drain Valve, 17/32" test orifice (K115 testing), FM, UL	1
RDA61Y012	1.1/4" (32mm) A61 Test & Drain Valve, 5/8" test orifice (K160 testing), FM, UL	1
RDA61Y010	1.1/4" (32mm) A61 Test & Drain Valve, 3/4" test orifice (K200 testing), FM, UL	1
RDA61Y030	2" (50mm) A61 Test & Drain Valve, 7/16" test orifice (K57 testing), FM, UL	1
RDA61Y032	2" (50mm) A61 Test & Drain Valve, 1/2" test orifice (K80 testing), FM, UL	1
RDA61Y033	2" (50mm) A61 Test & Drain Valve, 17/32" test orifice (K115 testing), FM, UL	1
RDA61Y034	2" (50mm) A61 Test & Drain Valve, 5/8" test orifice (K160 testing), FM, UL	1
RDA61Y035	2" (50mm) A61 Test & Drain Valve, 3/4" test orifice (K200 testing), FM, UL	1
RDA61Y036	2" (50mm) A61 Test & Drain Valve, 15/16" test orifice (K240 testing), FM, UL	1
RDA61Y037	2" (50mm) A61 Test & Drain Valve, 15/64" test orifice (K320 testing), FM, UL	1
RDA61Y038	2" (50mm) A61 Test & Drain Valve, 19/64" test orifice (K362 testing), FM, UL	1



A61 GROOVED TEST & DRAIN VALVES

- Grooved
- Nominal pressure rated to 20.6 bar (300 PSI)
- Working temperature range of -10 / +120°C (14 / 250°F)
- Approval: UL Listed & FM Approved
- Available in 1", 1 ¼", 1 ½" and 2" pipe size connections
- Standard thread connection: NPT
- K Factors K80 (K5.6) to K360 (K25)
- Brass body with three position ball valve OFF / TEST / DRAIN
- Integral sight glass with acrylic see through windows

PART NUMBER	DESCRIPTION	BOX QTY
Datasheet No. 7.03		
RDA61Y056	1.1/4" (32mm) A61 Test & Drain Valve, 1/2" test orifice (K80 testing), FM, UL	1
RDA61Y058	1.1/4" (32mm) A61 Test & Drain Valve, 17/32" test orifice (K115 testing), FM, UL	1
RDA61Y060	1.1/4" (32mm) A61 Test & Drain Valve, 3/4" test orifice (K200 testing), FM, UL	1
RDA61Y062	1.1/4" (32mm) A61 Test & Drain Valve, 5/8" test orifice (K160 testing), FM, UL	1
RDA61Y082	2" (50mm) A61 Test & Drain Valve, 1/2" test orifice (K80 testing), FM, UL	1
RDA61Y083	2" (50mm) A61 Test & Drain Valve, 17/32" test orifice (K115 testing), FM, UL	1
RDA61Y085	2" (50mm) A61 Test & Drain Valve, 3/4" test orifice (K200 testing), FM, UL	1
RDA61Y086	2" (50mm) A61 Test & Drain Valve, 15/16" test orifice (K240 testing), FM, UL	1
RDA61Y087	2" (50mm) A61 Test & Drain Valve, 15/64" test orifice (K320 testing), FM, UL	1
RDA61Y088	2" (50mm) A61 Test & Drain Valve, 19/64" test orifice (K362 testing), FM, UL	1



STANDARD PORT / BRASS BALL VALVE

Standard Port Ball Valve Model R250D

- FM approved, UL Listed
- Connections female-female BSPP Thread (ISO 228)
- UNI EN 12165 CW617N chrome-plated brass valve
- Steel lever handle with pvc anti-corrosion coating

Brass Ball Valve with Locking Lever

- Screwed BSP female full bore nickel plated locking lever ball valve
- Approved to EN 331-MOP5
- Yellow PVC coated lever
- Optional common key padlock

PART NUMBER	DESCRIPTION	BOX QTY
Datasheet No. 1.33, 1.81		
RDBV015R250D	½" (15mm) Model R250D Standard Port ball valve, FM, UL	1
RDBV020R250D	¾" (20mm) Model R250D Standard Port ball valve, FM, UL	1
RDBV025R250D	1" (25mm) Model R250D Standard Port ball valve, FM, UL	1
RDBV032R250D	1 ¼" (32mm) Model R250D Standard Port ball valve, FM, UL	1
RDBV040R250D	1 ½" (40mm) Model R250D Standard Port ball valve, FM, UL	1
RDBV050R250D	2" (50mm) Model R250D Standard Port ball valve, FM, UL	1
RDLBV015S	½" (15mm) BSP threaded locking lever ball valve, PN40	1
RDLBV020S	¾" (20mm) BSP threaded locking lever ball valve, PN40	1
RDLBV025S	1" (25mm) BSP threaded locking lever ball valve, PN40	1
RDLBV032S	1 ¼" (32mm) BSP threaded locking lever ball valve, PN25	1
RDLBV040S	1 ½" (40mm) BSP threaded locking lever ball valve, PN25	1
RDLBV050S	2" (50mm) BSP threaded locking lever ball valve, PN25	1
RDLBV065S	2 ½" (65mm) BSP threaded locking lever ball valve, PN16	1
RDLBV080S	3" (80mm) BSP threaded locking lever ball valve, PN16	1
RDLBV100S	4" (100mm) BSP threaded locking lever ball valve, PN16	1
RDPAD25	25mm Padlock to fit to lever locking ball valve	1



MODEL 304 GROOVED / CVF300 FLANGED

Model 304 Grooved swing check valve

- Sizes DN50-DN200
- FM approved, UL Listed
- 24.0 bar (350 psi)

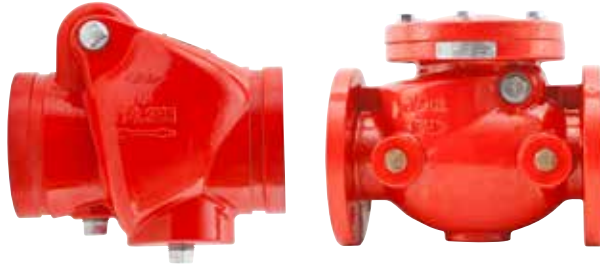
Model CVF300 Flanged swing check valve

- Sizes DN50-DN300
- FM approved, UL Listed
- 20.7 bar (300 psi)

PART NUMBER	DESCRIPTION	BOX QTY
Datasheet No. 1.23, 1.36		
RDCVS050G	2" (50mm) model 304 grooved swing check valve, UL	1
RDCVS065G	2 ½" (65mm) model 304 grooved swing check valve (76mm o/d), FM, UL	1
RDCVS080G	3" (80mm) model 304 grooved swing check valve, FM, UL	1
RDCVS100G	4" (100mm) model 304 grooved swing check valve, FM, UL	1
RDCVS168G	6" (168mm) model 304 grooved swing check valve, FM, UL	1
RDCVS150G	6" (150mm) model 304 grooved swing check valve, FM, UL (Outside diameter 165mm only for UK market)	1
RDCVS200G	8" (200mm) model 304 grooved swing check valve, FM, UL	1
RDCVF050F	2" (50mm) model CVF300 PN16 flanged swing check valve, FM, UL	1
RDCVF065F	2 ½" (65mm) model CVF300 PN16 flanged swing check valve, FM, UL	1
RDCVF080F	3" (80mm) model CVF300 PN16 flanged swing check valve, FM, UL	1
RDCVF100F	4" (100mm) model CVF300 PN16 flanged swing check valve, FM, UL	1
RDCVF150F	6" (150mm) model CVF300 PN16 flanged swing check valve, FM, UL	1
RDCVF200F	8" (200mm) model CVF300 PN16 flanged swing check valve, FM, UL	1
RDCVF250F	10" (250mm) model CVF300 PN16 flanged swing check valve, FM, UL	1
RDCVF300F	12" (300mm) model CVF300 PN16 flanged swing check valve, FM, UL	1



Cert:LPCB/ ref. 566j/01



MODEL 301 GROOVED / 302 FLANGED

Model 301 grooved swing check valve

- Sizes DN50-DN300
- 17.2 bar (250 psi) FM
- 20.7 bar (300 psi) UL
- 25.0 bar (362 psi) LPCB, VdS

Model 302 PN16 flanged swing check valve

- Sizes DN50-DN300
- 16.0 bar (232 psi) FM
- 20.7 bar (300 psi) UL
- 25.0 bar (362 psi) LPCB

PART NUMBER	DESCRIPTION	BOX QTY
Datasheet No. 1.57, 1.74		
RD301CV050	2" (50mm) (60.3mm o/d) model 301 grooved swing check valve, UL, FM, LPCB, VdS	1
RD301CV065	2 ½" (65mm) (76.1mm o/d) model 301 grooved swing check valve, UL, FM, LPCB, VdS	1
RD301CV080	3" (80mm) (88.9mm o/d) model 301 grooved swing check valve, UL, FM, LPCB, VdS	1
RD301CV100	4" (100mm) (114.3mm o/d) model 301 grooved swing check valve, UL, FM, LPCB, VdS	1
RD301CV139	5" (125mm) (139.7mm o/d) model 301 grooved swing check valve, UL, FM, LPCB, VdS	1
RD301CV168	6" (150mm) (168.3mm o/d) model 301 grooved swing check valve, UL, FM, LPCB, VdS (European Market)	1
RD301CV150	6" (150mm) (165.0mm o/d) model 301 grooved swing check valve, UL, FM, LPCB, VdS (UK Market)	1
RD301CV200	8" (200mm) (219.1mm o/d) model 301 grooved swing check valve, UL, FM, LPCB, VdS	1
RD301CV250	10" (250mm) (273.0mm o/d) model 301 grooved swing check valve, UL, FM, LPCB, VdS	1
RD301CV300	12" (300mm) (323.9mm o/d) model 301 grooved swing check valve, UL, FM, LPCB, VdS	1
RD302CV050	2" (50mm) model 302 PN16 flanged swing check valve, FM, UL, LPCB	1
RD302CV065	2 ½" (65mm) model 302 PN16 flanged swing check valve, FM, UL, LPCB	1
RD302CV080	3" (80mm) model 302 PN16 flanged swing check valve, FM, UL, LPCB	1
RD302CV100	4" (100mm) model 302 PN16 flanged swing check valve, FM, UL, LPCB	1
RD302CV150	6" (150mm) model 302 PN16 flanged swing check valve, FM, UL, LPCB	1
RD302CV200	8" (200mm) model 302 PN16 flanged swing check valve, FM, UL, LPCB	1
RD302CV250	10" (250mm) model 302 PN16 flanged swing check valve, FM, UL, LPCB	1
RD302CV300	12" (300mm) model 302 PN16 flanged swing check valve, FM, UL, LPCB	1



MODEL 303

- UL listed
- Dual Plate Check Valve
- Cast Iron Body
- Stainless Steel Plates & Springs
- EPDM Seat
- To suit PN16 Flanges
- Rated PN16
- Temperature 0°C to 120°C.

PART NUMBER	DESCRIPTION	BOX QTY
Datasheet No. 1.75		
RD303-050	2" (50mm) Double door wafer check valve to suit PN16 flange, UL	1
RD303-065	2 ½" (65mm) Double door wafer check valve, to suit PN16 flange, UL	1
RD303-080	3" (80mm) Double door wafer check valve, to suit PN16 flange, UL	1
RD303-100	4" (100mm) Double door wafer check valve, to suit PN16 flange, UL	1
RD303-150	6" (150mm) Double door wafer check valve, to suit PN16 flange, UL	1
RD303-200	8" (200mm) Double door wafer check valve, to suit PN16 flange, UL	1
RD303-250	10" (250mm) Double door wafer check valve, to suit PN16 flange, UL	1
RD303-300	12" (300mm) Double door wafer check valve, to suit PN16 flange, UL	1
RD303-350	14" (350mm) Double door wafer check valve, to suit PN16 flange, UL	1
RD303-400	16" (400mm) Double door wafer check valve, to suit PN16 flange, UL	1



SPRING LOADED CHECK VALVE

- Brass Spring Check Valve - Full Flow
- NBR Seal
- Polyacetal Disc
- Screwed BSPP Female
- Temperature Range -10°C to 90°C
- Can be installed in vertical or horizontal position

PART NUMBER	DESCRIPTION	BOX QTY
Datasheet No. 1.32		
RDCVSP015S	½" (15mm) Spring loaded threaded swing check valve, PN40 pressure rated"	1
RDCVSP020S	¾" (20mm) Spring loaded threaded swing check valve, PN40 pressure rated"	1
RDCVSP025S	1" (25mm) Spring loaded threaded swing check valve, PN25 pressure rated"	1
RDCVSP032S	1 ¼" (32mm) Spring loaded threaded swing check valve, PN25 pressure rated"	1
RDCVSP040S	1 ½" (40mm) Spring loaded threaded swing check valve, PN16 pressure rated"	1
RDCVSP050S	2" (50mm) Spring loaded threaded swing check valve, PN16 pressure rated"	1



MODEL YSF175 FLANGED / YSG175 GROOVED

Model YSF175 flanged Y-Type strainer

- Sizes DN65 to DN300
- Connection: Flange to ANSI B16.1 Class 125
- Max. working pressure: 12 bar (175 PSI)
- UL approved

Model YSG175 grooved Y-Type strainer

- Sizes DN65 to DN300
- Connection: Groove to ISO 6182/ AWWA C606
- Max. working pressure: 12 bar (175 PSI)
- UL approved

PART NUMBER	DESCRIPTION	BOX QTY
Datasheet No. 6.06, 6.07		
RDYSTRAIN065	2 ½" (65mm) Model YSF175 flanged PN16 Y-Type strainer, UL	1
RDYSTRAIN080	3" (80mm) Model YSF175 flanged PN16 Y-Type strainer, UL	1
RDYSTRAIN100	4" (100mm) Model YSF175 flanged PN16 Y-Type strainer, UL	1
RDYSTRAIN150	6" (150mm) Model YSF175 flanged PN16 Y-Type strainer, UL	1
RDYSTRAIN200	8" (200mm) Model YSF175 flanged PN16 Y-Type strainer, UL	1
RDYSTRAIN250	10" (250mm) Model YSF175 flanged PN16 Y-Type strainer, UL	1
RDYSTRAIN300	12" (300mm) Model YSF175 flanged PN16 Y-Type strainer, UL	1
RDYSTRAIN065G	2 ½" (65mm) (76.1mm o/d) Model YSG175 grooved Y-Type strainer, UL	1
RDYSTRAIN080G	3" (80mm) (88.9mm o/d) Model YSG175 grooved Y-Type strainer, UL	1
RDYSTRAIN100G	4" (100mm) (114.3mm o/d) Model YSG175 grooved Y-Type strainer, UL	1
RDYSTRAIN168G	6" (150mm) (168.3mm o/d) Model YSG175 grooved Y-Type strainer, UL	1
RDYSTRAIN200G	8" (200mm) (219.1mm o/d) Model YSG175 grooved Y-Type strainer, UL	1
RDYSTRAIN250G	10" (250mm) (273.0mm o/d) Model YSG175 grooved Y-Type strainer, UL	1
RDYSTRAIN300G	12" (300mm) (323.9mm o/d) Model YSG175 grooved Y-Type strainer, UL	1



CAST IRON FOOT VALVE

- Cast iron foot valve and Strainer
- Flanged PN10 upto 6", PN10 8" to 12"
- Cast Iron Body, Stainless Steel Screen
- Cast Iron Disc with EPDM Seal with Back Seat
- 8mm Mesh
- Rated PN10
- Temperature -10°C to 90°C.

PART NUMBER	DESCRIPTION	BOX QTY
Datasheet No. 6.20		
RDFV050	2" (50mm) Cast iron foot valve c/w strainer, PN10	1
RDFV065	2 ½" (65mm) Cast iron foot valve c/w strainer, PN10	1
RDFV080	3" (80mm) Cast iron foot valve c/w strainer, PN10	1
RDFV100	4" (100mm) Cast iron foot valve c/w strainer, PN10	1
RDFV150	6" (150mm) Cast iron foot valve c/w strainer, PN10	1
RDFV200	8" (200mm) Cast iron foot valve c/w strainer, PN10	1
RDFV250	10" (250mm) Cast iron foot valve c/w strainer, PN10	1
RDFV300	12" (300mm) Cast iron foot valve c/w strainer, PN10	1



BRASS BSP THREADED GATE VALVE

- BSP Gate valves, Brass
- To BS5154
- Bronze Body & Bonnet
- Screwed BSPP
- Rated PN20 and PN25
- Temperature Range -20°C to 180°C.

PART NUMBER	DESCRIPTION	BOX QTY
Datasheet No. 1.34		
RDGVB015S	WRAS approved ½" (15mm) brass BSP threaded gate valve, PN20	1
RDGVB020S	WRAS approved ¾" (20mm) brass BSP threaded gate valve, PN20	1
RDGVB025S	WRAS approved 1" (25mm) brass BSP threaded gate valve, PN20	1
RDGVB032S	WRAS approved 1 ¼" (32mm) brass BSP threaded gate valve, PN20	1
RDGVB040S	WRAS approved 1 ½" (40mm) brass BSP threaded gate valve, PN20	1
RDGVB050S	WRAS approved 2" (50mm) brass BSP threaded gate valve, PN20	1
RDGVB065S	WRAS approved 2 ½" (65mm) brass BSP threaded gate valve, PN20	1
RDGVB080S	WRAS approved 3" (80mm) brass BSP threaded gate valve, PN20	1
RDGVB100S	WRAS approved 4" (100mm) brass BSP threaded gate valve, PN20	1
RDGVB015SPN25	WRAS approved ½" (15mm) brass BSP threaded gate valve, PN25	1
RDGVB020SPN25	WRAS approved ¾" (20mm) brass BSP threaded gate valve, PN25	1
RDGVB025SPN25	WRAS approved 1" (25mm) brass BSP threaded gate valve, PN25	1
RDGVB032SPN25	WRAS approved 1 ¼" (32mm) brass BSP threaded gate valve, PN25	1
RDGVB040SPN25	WRAS approved 1 ½" (40mm) brass BSP threaded gate valve, PN25	1
RDGVB050SPN25	WRAS approved 2" (50mm) brass BSP threaded gate valve, PN25	1
RDGVB065SPN25	WRAS approved 2 ½" (65mm) brass BSP threaded gate valve, PN25	1
RDGVB080SPN25	WRAS approved 3" (80mm) brass BSP threaded gate valve, PN25	1
RDGVB100PN25	WRAS approved 4" (100mm) brass BSP threaded gate valve, PN25	1

ZONE ASSEMBLIES



- Available in 50mm, 65mm, 85mm, 100mm, 200mm
- Unit is supplied pre-wired using FP200 cable
- FM valve fitted as standard
- Assembled in Rapidrop UK workshop

Note

Non stock item - Manufactured to order

Options

Test & Drain Valve sold separately

PART NUMBER	DESCRIPTION	BOX QTY
Datasheet No. 7.02		
RDZA050216	50mm zone assembly c/w FM monitored butterfly valve & flow switch	1
RDZA065216	65mm zone assembly c/w FM monitored butterfly valve & flow switch	1
RDZA080216	80mm zone assembly c/w FM monitored butterfly valve & flow switch	1
RDZA100216	100mm zone assembly c/w FM monitored butterfly valve & flow switch	1
RDZA165216	150mm zone assembly c/w FM monitored butterfly valve & flow switch	1
RDZA200216	200mm zone assembly c/w FM monitored butterfly valve & flow switch	1

Please note: Test and Drain Valves are not included and need to be ordered sperately



ZONECHECK

- Available in sizes 50mm (2") - 200mm (8")
- Can be installed Horizontally or Vertically
- Maximum Working Pressure of 15 bar
- FM, UL, LPCB and VdS approved

PART NUMBER	DESCRIPTION	BOX QTY
Datasheet No. 7.25		
RDZC050R	Zonecheck 50mm (2") RH 450mm lg c/w keyswitch	1
RDZC065R	Zonecheck 65mm (2.5") RH 450mm lg c/w keyswitch	1
RDZC080R	Zonecheck 80mm (3") RH 450mm lg c/w keyswitch	1
RDZC100R	Zonecheck 100mm (4") RH 450mm lg c/w keyswitch	1
RDZC150R	Zonecheck 150mm (6") RH 450mm lg c/w keyswitch 165mm (UK)	1
RDZC168R	Zonecheck 150mm (6") 168mm RH 450mm lg c/w keyswitch	
RDZC200R	Zonecheck 200mm (8") RH 450mm lg c/w keyswitch	1
RDZC-KYSE	Zonecheck key switch unit (spare)	1
RDZCAD050R	Zonecheck Addressable 50mm (2") RH 450mm c/w IMM	1
RDZCAD065R	Zonecheck Addressable 65mm (2.5") RH 450mm c/w IMM	1
RDZCAD080R	Zonecheck Addressable 80mm (3") RH 450mm c/w IMM	1
RDZCAD100R	Zonecheck Addressable 100mm (4") RH 450mm c/w IMM	1
RDZCAD150R	Zonecheck Addressable 150mm (6") RH 450mm c/w IMM 165mm (UK)	1
RDZCAD168R	Zonecheck Addressable 150mm (6") 168mm RH 450mm c/w IMM	
RDZCAD200R	Zonecheck Addressable 200mm (8") RH 450mm c/w IMM	1
RDZC-IMM	Addressable IMM (Intelligent Monitoring Module) (spare)	1
RDZC-CONTROLLER	Addressable Controller	1
RDZC-CONTRSCADA	Addressable SCADA Controller	1

Left hand available upon request



TURBO LUX 3 FLOW METER

- LPCB, FM, VdS approved (sizes 2" - 8")
- Grooved connections
- Can be installed vertically or horizontally
- 16 bar rated
- Pump flow rate from 185 - 19 000 lpm (50 - 5 000 USgpm)
- Measuring flow range from 75 - 38 000 lpm (20 - 10 000 USgpm)
- Unique installation assembly, just with one threaded connection (no tools required)

PART NUMBER	DESCRIPTION	BOX QTY
Datasheet No. 6.15		
RDT3M050/75-375	Turbolux3 grooved 2"/ DN50 (60,3mm) 75-375 LPM, FM, LPCB, VdS	1
RDT3M076/150-750	Turbolux3 grooved 2 1/2"/ DN65 (76,1mm) 150-750 LPM, FM, LPCB, VdS	1
RDT3M080/220-1100	Turbolux3 grooved 3"/ DN80 (88,9mm) 220-1100 LPM, FM, LPCB, VdS	1
RDT3M080/300-1500	Turbolux3 grooved 3"/ DN80 (88,9mm) 300-1500 LPM, FM, LPCB, VdS	1
RDT3M100/380-1900	Turbolux3 grooved 4"/ DN100 (114,3mm) 380-1900 LPM, FM, LPCB, VdS	1
RDT3M100/460-2300	Turbolux3 grooved 4"/ DN100 (114,3mm) 460-2300 LPM, FM, LPCB, VdS	1
RDT3M100/600-3000	Turbolux3 grooved 4"/ DN100 (114,3mm) 600-3000 LPM, FM, LPCB, VdS	1
RDT3M100/680-3400	Turbolux3 grooved 4"/ DN100 (114,3mm) 680-3400 LPM, FM, LPCB, VdS	1
RDT3M150/760-3800	Turbolux3 grooved 6"/ DN150 (165,1mm) 760-3800 LPM, FM, LPCB, VdS	1
RDT3M150/1130-5650	Turbolux3 grooved 6"/ DN150 (165,1mm) 1130-5650 LPM, FM, LPCB, VdS	1
RDT3M150/1500-7500	Turbolux3 grooved 6"/ DN150 (165,1mm) 1500-7500 LPM, FM, LPCB, VdS	1
RDT3M150/1900-9500	Turbolux3 grooved 6"/ DN150 (165,1mm) 1900-9500 LPM, FM, LPCB, VdS	1
RDT3M168/760-3800	Turbolux3 grooved 6"/ DN150 (168,3mm) 760-3800 LPM, FM, LPCB, VdS	1
RDT3M168/1130-5650	Turbolux3 grooved 6"/ DN150 (168,3mm) 1130-5650 LPM, FM, LPCB, VdS	1
RDT3M168/1500-7500	Turbolux3 grooved 6"/ DN150 (168,3mm) 1500-7500 LPM, FM, LPCB, VdS	1
RDT3M168/1900-9500	Turbolux3 grooved 6"/ DN150 (168,3mm) 1900-9500 LPM, FM, LPCB, VdS	1
RDT3M200/2200-11000	Turbolux3 grooved 8"/ DN200 (219,1mm) 2200-11000 LPM, FM, LPCB, VdS	1
RDT3M200/3000-15000	Turbolux3 grooved 8"/ DN200 (219,1mm) 3000-15000 LPM, FM, LPCB, VdS	1
RDT3M200/3800-19000	Turbolux3 grooved 8"/ DN200 (219,1mm) 3800-19000 LPM, FM, LPCB, VdS	1
RDT3M200/4500-22500	Turbolux3 grooved 8"/ DN200 (219,1mm) 4500-22500 LPM, FM, LPCB, VdS	1
RDT3M250/5300-26500	Turbolux3 grooved 10"/ DN250 (273,0mm) 5300-26500 LPM, FM	1
RDT3M250/6000-30000	Turbolux3 grooved 10"/ DN250 (273,0mm) 6000-30000 LPM, FM	1
RDT3M250/6800-34000	Turbolux3 grooved 10"/ DN250 (273,0mm) 6800-34000 LPM, FM	1
RDT3M300/7600-38000	Turbolux3 grooved 12"/ DN300 (323,9mm) 7600-38000 LPM, FM	1
RDT3MCERT	Calibration Certificate (SET Orifice and Bypass Flowmeter)	1
RDT3MBYPASS	Bypass Flowmeter (Replacement)	1
RDT3MCAP	Replacement cap (incl. gasket)	1

General Description

The Turbo-Lux 3 is the first fire pump flow measuring device to be approved by all three approval bodies, LPCB, VdS and FM. With only two components, the Turbo Lux 3 is supplied as standard with ISO6182-12 grooved end connections for ease and speed of installation.

Features

- Nominal size from DN50 / 2" to DN300 / 12"
- Pump flow rate from 185 - 19 000 lpm (50 - 5 000 USgpm)
- Measuring flow range from 75 - 38 000 lpm (20 - 10 000 USgpm)
- Measurement accuracy certificate supplied as standard for the bypass meter (optional calibration certificate)
- Easy to install with grooved connections
- Unique installation assembly, just with one threaded connection (no tools required)
- Can be installed in any angle of pipe, horizontal through to vertical.
- Long life span, stainless steel standard up to DN100
- FM, LPCB and VdS approved

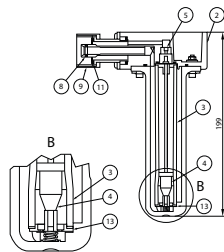
Materials Specifications

Description	Material
Housing	(2"/DN50 to 4"/DN100) Stainless Steel with turned grooved connection (6"/DN150 to 12"/DN300) Coated Steel with rolled grooved connection*
Differential Pressure Tube	Brass
Float	Stainless Steel
Bypass Orifice	Stainless Steel
Filter	Stainless Steel
Seal	NBR

* Optional in stainless steel with rolled grooved connection

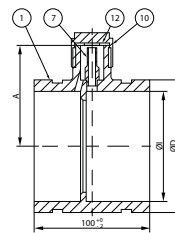
- ① Housing tube
- ② Bypass meter
- ③ Measuring tube
- ④ Float
- ⑤ Bypass orifice
- ⑦ Differential pressure

- ⑧ O-Ring
- ⑨ Screw cap
- ⑩ Cap
- ⑪ O-Ring
- ⑫ Seal
- ⑬ Filter

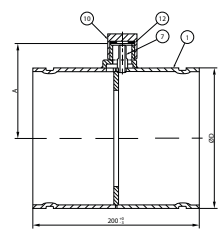


Technical Data

Measuring principle	Orifice plate flowmeter with variable flowmeter as indication
Nominal Size	DN50/2" grooved ends (Ø60.3 mm) DN65/2 1/2" grooved ends (Ø73.0mm) DN65/2 1/2" grooved ends (Ø76.1mm) DN80/3" grooved ends (Ø88.9mm) DN100/4" grooved ends (Ø114.3mm) DN150/6" grooved ends (Ø165.1mm) DN150/6" grooved ends (Ø168.3mm) DN200/8" grooved ends (Ø219.1mm) DN250/10" grooved ends (Ø273.0mm) DN300/12" grooved ends (Ø323.9mm)
Max. Working Pressure	16 bar (232 psi)
Hydrostatically strength Pressure Strength	64 bar (928 psi) for 5 min (FM) 40 bar (580 psi) for 5 min (LPCB) 64 bar (928 psi) for 10 min (VdS)
Measuring Accuracy	±2.0% of full scale value (FM) ±5.0% of measured value (LPCB) ±2.5% of full scale value (VdS)
Temperature Range	+4 °C to +50 °C (+39°F to +122°F)
Medium	Water



Turbo-Lux 3 orifice plate and bypass meter
2"/DN 50 - 4"/DN 100



Turbo-Lux 3 orifice plate 6"/DN 150 - 12"/DN 300

Dimensions and Weights

Nominal Size	Dimensions			Packing Size	Weight incl. packing kg (lbs)
	A (approx)	ØD	ØI		
DN50 / 2 1/2"	60mm (2.4")	60.3mm (2.4")	53mm (2.1")	380 x 270 x 250	2.0(4.4)
DN65 / 2"	68mm (2.7")	76.1mm (3.0")	66mm (2.6")	380 x 270 x 250	2.1(4.6)
DN80 / 3"	75mm (2.9")	88.9mm (3.5")	80mm (3.1")	380 x 270 x 250	2.3(5.1)
DN100 / 4"	87mm (3.4")	114.3mm (4.5")	100mm (3.9")	380 x 270 x 250	3.2(7.0)
DN150 / 6"	113mm (4.4")	165.1mm (6.5")	-	380 x 270 x 250	4.9(10.8)
DN150 / 6"	114mm (4.5")	168.3mm (6.6")	-	380 x 270 x 250	4.9(10.8)
DN200 / 8"	140mm (5.5")	219.1mm (8.6")	-	380 x 270 x 250	6.4(14.1)
DN250 / 10"	166mm (6.5")	273.0mm (10.8")	-	500 x 350 x 300	8.5(18.7)
DN300 / 12"	192mm (7.5")	323.9mm (12.7")	-	500 x 350 x 350	11(24.2)



Cert/LPCB/ ref. 564a/01-10



WAFER FLOW METER

- FM Approved Wafer design
- Sizes 80mm to 200mm
- LPCB Approved Wafer design
- Sizes 50mm to 200mm
- Grooved model also available

PART NUMBER	DESCRIPTION	BOX QTY
Datasheet No. 6.04, 6.09		
RDFLMFLG080FM	3" Influx Flow Meter, wafer type, 400-1500lpm, FM	1
RDFLMFLG100FM	4" Influx Flow Meter, wafer type, 600-3400lpm, FM	1
RDFLMFLG150FM	6" Influx Flow Meter, wafer type, 1000-7500lpm, FM	1
RDFLMFLG200FM	8" Influx Flow Meter, wafer type, 3000-15000lpm, FM	1
RDFLMFLG050I	2" Influx Flow Meter, wafer type, 150-750 lpm, LPCB	1
RDFLMFLG080I	3" Influx Flow Meter, wafer type, 300-2300 lpm, LPCB	1
RDFLMFLG100I	4" Influx Flow Meter, wafer type, 500-3500 lpm, LPCB	1
RDFLMFLG150I	6" Influx Flow Meter, wafer type, 900-7900 lpm, LPCB	1
RDFLMFLG200I	8" Influx Flow Meter, wafer type, 2000-15000 lpm, LPCB	1

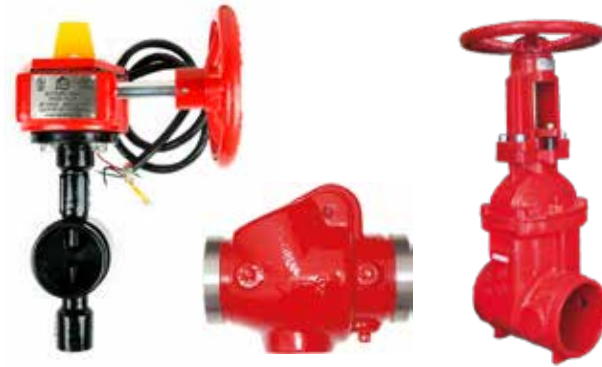


FIRE PUMP TEST METER

- FM - Grooved
- Venturi type
- Sizes 80mm to 300mm

PART NUMBER	DESCRIPTION	BOX QTY
Datasheet No. 6.08		
RDPTMG0150080	Fire pump test meter 80mm (3") grooved 75-300 GPM FM approved	1
RDPTMG0200080	Fire pump test meter 80mm (3") grooved 100-400 GPM FM approved	1
RDPTMG0250100	Fire pump test meter 100mm (4") grooved 125-500 GPM FM approved	1
RDPTMG0300100	Fire pump test meter 100mm (4") grooved 150-600 GPM FM approved	1
RDPTMG0400100	Fire pump test meter 100mm (4") grooved 200-800 GPM FM approved	1
RDPTMG0450100	Fire pump test meter 100mm (4") grooved 225-900 GPM FM approved	1
RDPTMG0500150	Fire pump test meter 150mm (6") grooved 250-1000GPM FM approved	1
RDPTMG0750150	Fire pump test meter 150mm (6") grooved 375-1500 GPM FM approved	1
RDPTMG1000150	Fire pump test meter 150mm (6") grooved 500-2000 GPM FM approved	1
RDPTMG1250150	Fire pump test meter 150mm (6") grooved 625-2500 GPM FM approved	1
RDPTMG1000200	Fire pump test meter 200mm (8") grooved 500-2000 GPM FM approved	1
RDPTMG1250200	Fire pump test meter 200mm (8") grooved 625-2500 GPM FM approved	1
RDPTMG1500200	Fire pump test meter 200mm (8") grooved 750-3000 GPM FM approved	1
RDPTMG2000200	Fire pump test meter 200mm (8") grooved 1000-4000 GPM FM approved	1
RDPTMG2500200	Fire pump test meter 200mm (8") grooved 1250-5000 GPM FM approved	1
RDPTMG3000200	Fire pump test meter 200mm (8") grooved 1500-6000 GPM FM approved	1
RDPTMG1500250	Fire pump test meter 250mm (10") grooved 750-3000 GPM FM approved	1
RDPTMG2000250	Fire pump test meter 250mm (10") grooved 1000-4000 GPM FM approved	1
RDPTMG2500250	Fire pump test meter 250mm (10") grooved 1250-5000 GPM FM approved	1
RDPTMG3000250	Fire pump test meter 250mm (10") grooved 1500-6000 GPM FM approved	1
RDPTMG3500250	Fire pump test meter 250mm (10") grooved 1750-7000 GPM FM approved	1
RDPTMG4000250	Fire pump test meter 250mm (10") grooved 2000-8000 GPM FM approved	1
RDPTMG4500250	Fire pump test meter 250mm (10") grooved 2250-9000 GPM FM approved	1

Butt Weld and Wafer design available on request



BUTTERFLY / CHECK / OS&Y GATE VALVES

- 27.5 bar (400 PSI)
- Grooved and Wafer Butterfly Valves Available
- Butterfly Valve sizes range from 2.5"(65mm) - 12"(300mm)
- Check Valve sizes range from 2"(50mm) - 8"(200mm)
- OS&Y Resilient Wedge Gate Valve sizes range from 2.5"(65mm) - 10"(250mm)

PART NUMBER	DESCRIPTION	BOX QTY
Datasheet No. 1.73, 1.76, 1.77		
RD221-100400	4" (100mm) Butterfly Valve, Grooved, c/w switch (114.3 mm o/d)	1
RD221-150400	6" (150mm) Butterfly Valve, Grooved, c/w switch (165.1 mm o/d)	1
RD220-100400	4" (100mm) Butterfly Valve, Wafer, c/w switch (114.3 mm o/d)	1
RD220-150400	6" (150mm) Butterfly Valve, Wafer, c/w switch (165.1 mm o/d)	1
RDCVS100G400	4" (100mm) Check Valve, Grooved	1
RDCVS150G400	6" (150mm) Check Valve, Grooved	1
RD103GG100400	4" (100mm) OS&Y Gate Valve Fig.103GG, Grooved	1
RD103GG150400	6" (150mm) OS&Y Gate Valve Fig.103GG, Grooved	1



CLA-VAL PRESSURE REDUCING VALVES (MODEL 90G-21)

- Globe Pattern
- UL Listed
- Proven Reliable Design
- Available in Cast Bronze, Ductile Iron and Cast Steel
- Accurate Pressure Control
- In Line Service
- Grooved Ends (40 - 200 mm)

PART NUMBER	DESCRIPTION	BOX QTY
Datasheet No 1.25		
RD90G-21-040RF	90G-21 Globe DN40 Pressure Reducing Valve, ANSI 150RF, UL	1
RD90G-21-050RF	90G-21 Globe DN50 Pressure Reducing Valve, ANSI 150RF, UL	1
RD90G-21-065RF	90G-21 Globe DN65 Pressure Reducing Valvs, ANSI 150RF, UL	1
RD90G-21-080RF	90G-21 Globe DN80 Pressure Reducing Valve, ANSI 150RF, UL	1
RD90G-21-100RF	90G-21 Globe DN100 Pressure Reducing Valve, ANSI 150RF, UL	1
RD90G-21-150RF	90G-21 Globe DN150 Pressure Reducing Valve, ANSI 150RF, UL	1
RD90G-21-200RF	90G-21 Globe DN200 Pressure Reducing Valve, ANSI 150RF, UL	1
RD90G-21-250RF	90G-21 Globe DN250 Pressure Reducing Valve, ANSI 150RF, UL	1
RD90G-21-040G	90G-21 Globe DN40 Pressure Reducing Valve, Grooved Class150, UL	1
RD90G-21-050G	90G-21 Globe DN50 Pressure Reducing Valve, Grooved Class150, UL	1
RD90G-21-065G	90G-21 Globe DN65 Pressure Reducing Valve, Grooved Class150, UL	1
RD90G-21-080G	90G-21 Globe DN80 Pressure Reducing Valve, Grooved Class150, UL	1
RD90G-21-100G	90G-21 Globe DN100 Pressure Reducing Valve, Grooved Class150, UL	1
RD90G-21-150G	90G-21 Globe DN150 Pressure Reducing Valve, Grooved Class150, UL	1
RD90G-21-168G	90G-21 Globe DN168 Pressure Reducing Valve, Grooved Class150, UL	1
RD90G-21-200G	90G-21 Globe DN200 Pressure Reducing Valve, Grooved Class150, UL	1
RD90G-21-040	90G-21 Globe DN040 Pressure Reducing Valve, PN16 Class150, UL	1
RD90G-21-050	90G-21 Globe DN050 Pressure Reducing Valve, PN16 Class150, UL	1
RD90G-21-065	90G-21 Globe DN065 Pressure Reducing Valve,PN16 Class150, UL	1
RD90G-21-080	90G-21 Globe DN080 Pressure Reducing Valve PN16 Class150, UL	1
RD90G-21-100	90G-21 Globe DN100 Pressure Reducing Valve, PN16 Class150, UL	1
RD90G-21-150	90G-21 Globe DN150 Pressure Reducing Valve, PN16 Class150, UL	1
RD90G-21-200	90G-21 Globe DN200 Pressure Reducing Valve, PN16 Class150, UL	1

Class 300 also available



CLA-VAL PRESSURE REDUCING VALVES (MODEL 90A-21)

- Angle Pattern
- UL Listed
- Proven Reliable Design
- Available in Cast Bronze, Ductile Iron and Cast Steel
- Accurate Pressure Control
- In Line Service
- Grooved Ends (40 - 200 mm)

PART NUMBER	DESCRIPTION	BOX QTY
Datasheet No 1.25		
RD90A-21-080RF	90A-21 Angle DN80 Pressure Reducing Valve, ANSI 150RF, UL	1
RD90A-21-100RF	90A-21 Angle DN100 Pressure Reducing Valve, ANSI 150RF, UL	1
RD90A-21-150RF	90A-21 Angle DN150 Pressure Reducing Valve, ANSI 150RF, UL	1
RD90A-21-200RF	90A-21 Angle DN200 Pressure Reducing Valve, ANSI 150RF, UL	1
RD90A-21-080G	90A-21 Angle DN80 Pressure Reducing Valve, Grooved Class150, UL	1
RD90A-21-100G	90A-21 Angle DN100 Pressure Reducing Valve, Grooved Class150, UL	1
RD90A-21-150G	90A-21 Angle DN150 Pressure Reducing Valve, Grooved Class150, UL	1
RD90A-21-168G	90A-21 Angle DN168 Pressure Reducing Valve, Grooved Class150, UL	1
RD90A-21-200G	90A-21 Angle DN200 Pressure Reducing Valve, Grooved Class150, UL	1
RD90A-21-080	90A-21 Angle DN080 Pressure Reducing Valve, PN16 Class150, UL	1
RD90A-21-100	90A-21 Angle DN100 Pressure Reducing Valve, PN16 Class150, UL	1
RD90A-21-150	90A-21 Angle DN150 Pressure Reducing Valve, PN16 Class150, UL	1
RD90A-21-200	90A-21 Angle DN200 Pressure Reducing Valve, PN16 Class150, UL	1

Class 300 also available



CLA-VAL PRESSURE RELIEF VALVES (MODEL 50B-4KG1)

- Globe Pattern
- FM Approved, UL Listed
- Fast Opening to Maintain Steady Line Pressure
- Accommodates Wide Range of Flow Rates
- Closes Gradually for Surge-Free Operation
- Adjustable Pressure Settings, Not Affected by Pressure At Valve Discharge

PART NUMBER	DESCRIPTION	BOX QTY
Datasheet No 1.25		
RD50B-4KG1-050RF	50B-4KG1 Globe DN50 Pressure Relief Valve, ANSI 150RF, FM, UL	1
RD50B-4KG1-065RF	50B-4KG1 Globe DN65 Pressure Relief Valve, ANSI 150RF, FM, UL	1
RD50B-4KG1-080RF	50B-4KG1 Globe DN80 Pressure Relief Valve, ANSI 150RF, FM, UL	1
RD50B-4KG1-100RF	50B-4KG1 Globe DN100 Pressure Relief Valve, ANSI 150RF, FM, UL	1
RD50B-4KG1-150RF	50B-4KG1 Globe DN150 Pressure Relief Valve, ANSI 150RF, FM, UL	1
RD50B-4KG1-200RF	50B-4KG1 Globe DN200 Pressure Relief Valve, ANSI 150RF, FM, UL	1
RD50B-4KG1-250RF	50B-4KG1 Globe DN250 Pressure Relief Valve, ANSI 150RF, FM, UL	1
RD50B-4KG1-050G	50B-4KG1 Globe DN50 Pressure Relief Valve, Grooved Class150, FM, UL	1
RD50B-4KG1-065G	50B-4KG1 Globe DN65 Pressure Relief Valve, Grooved Class150, FM, UL	1
RD50B-4KG1-080G	50B-4KG1 Globe DN80 Pressure Relief Valve, Grooved Class150, FM, UL	1
RD50B-4KG1-100G	50B-4KG1 Globe DN100 Pressure Relief Valve, Grooved Class150, FM, UL	1
RD50B-4KG1-150G	50B-4KG1 Globe DN150 Pressure Relief Valve, Grooved Class150, FM, UL	1
RD50B-4KG1-168G	50B-4KG1 Globe DN168 Pressure Relief Valve, Grooved Class150, FM, UL	1
RD50B-4KG1-200G	50B-4KG1 Globe DN200 Pressure Relief Valve, Grooved Class150, FM, UL	1
RD50B-4KG1-250G	50B-4KG1 Globe DN250 Pressure Relief Valve, Grooved Class150, FM, UL	1
RD50B-4KG1-050	50B-4KG1 Globe DN050 Pressure Relief Valve, PN16 Class150, FM, UL	1
RD50B-4KG1-065	50B-4KG1 Globe DN065 Pressure Relief Valve, PN16 Class150, FM, UL	1
RD50B-4KG1-080	50B-4KG1 Globe DN080 Pressure Relief Valve, PN16 Class150, FM, UL	1
RD50B-4KG1-100	50B-4KG1 Globe DN0100 Pressure Relief Valve, PN16 Class150, FM, UL	1
RD50B-4KG1-150	50B-4KG1 Globe DN150 Pressure Relief Valve, PN16 Class150, FM, UL	1
RD50B-4KG1-200	50B-4KG1 Globe DN200 Pressure Relief Valve, PN16 Class150, FM, UL	1
RD50B-4KG1-250	50B-4KG1 Globe DN250 Pressure Relief Valve, PN16 Class150, FM, UL	1

Class 300 also available



CLA-VAL PRESSURE RELIEF VALVES (MODEL 2050B-4KG1)

- Angle Pattern
- FM Approved, UL Listed
- Fast Opening to Maintain Steady Line Pressure
- Accommodates Wide Range of Flow Rates
- Closes Gradually for Surge-Free Operation
- Adjustable Pressure Settings, Not Affected by Pressure At Valve Discharge

PART NUMBER	DESCRIPTION	BOX QTY
Datasheet No 1.25		
RD2050B-4KG1-065RF	2050B-4KG1 Angle DN65 Pressure Relief Valve, ANSI 150RF, FM, UL	1
RD2050B-4KG1-080RF	2050B-4KG1 Angle DN80 Pressure Relief Valve, ANSI 150RF, FM, UL	1
RD2050B-4KG1-100RF	2050B-4KG1 Angle DN100 Pressure Relief Valve, ANSI 150RF, FM, UL	1
RD2050B-4KG1-150RF	2050B-4KG1 Angle DN150 Pressure Relief Valve, ANSI 150RF, FM, UL	1
RD2050B-4KG1-200RF	2050B-4KG1 Angle DN200 Pressure Relief Valve, ANSI 150RF, FM, UL	1
RD2050B-4KG1-250RF	2050B-4KG1 Angle DN250 Pressure Relief Valve, ANSI 150RF, FM, UL	1
RD2050B-4KG1-065G	2050B-4KG1 Angle DN65 Pressure Relief Valve, Grooved Class150, FM, UL	1
RD2050B-4KG1-080G	2050B-4KG1 Angle DN80 Pressure Relief Valve, Grooved Class150, FM, UL	1
RD2050B-4KG1-100G	2050B-4KG1 Angle DN100 Pressure Relief Valve, Grooved Class150, FM, UL	1
RD2050B-4KG1-150G	2050B-4KG1 Angle DN150 Pressure Relief Valve, Grooved Class150, FM, UL	1
RD2050B-4KG1-200G	2050B-4KG1 Angle DN200 Pressure Relief Valve, Grooved Class150, FM, UL	1
RD2050B-4KG1-250G	2050B-4KG1 Angle DN250 Pressure Relief Valve, Grooved Class150, FM, UL	1
RD2050B-4KG1-065	2050B-4KG1 Angle DN65 Pressure Relief Valve, PN16 Class150, FM, UL	1
RD2050B-4KG1-080	2050B-4KG1 Angle DN80 Pressure Relief Valve, PN16 Class150, FM, UL	1
RD2050B-4KG1-100	2050B-4KG1 Angle DN100 Pressure Relief Valve, PN16 Class150, FM, UL	1
RD2050B-4KG1-150	2050B-4KG1 Angle DN150 Pressure Relief Valve, PN16 Class150, FM, UL	1
RD2050B-4KG1-200	2050B-4KG1 Angle DN200 Pressure Relief Valve, PN16 Class150, FM, UL	1
RD2050B-4KG1-250	2050B-4KG1 Angle DN250 Pressure Relief Valve, PN16 Class150, FM, UL	1

Class 300 also available



CLA-VAL PRESSURE RELIEF VALVES (MODEL RD55L)

- UL Listed
- Factory Mutual Approved
- Direct Acting - Precise Pressure Control
- Positive Dependable Opening
- Drip Tight Closure
- No Packing Glands or Stuffing Boxes
- Sensitive to Small Pressure Variations

PART NUMBER	DESCRIPTION	BOX QTY
Datasheet No 1.25		
RD55L-60-015/200	55L-60 DN15 Pressure Relief Valve, 20-200PSI, UL	1
RD55L-60-020/200	55L-60 DN20 Pressure Relief Valve, 20-200PSI, UL	1
RD55L-60-015/300	55L-60 DN15 Pressure Relief Valve, 100-300PSI, UL	1
RD55L-60-020/300	55L-60 DN20 Pressure Relief Valve, 100-300PSI, UL	1
RD55L-60-025/75	55L-60 DN25 Pressure Relief Valve, 20-75PSI, UL	1
RD55L-60-025/200	55L-60 DN25 Pressure Relief Valve, 40-200PSI, UL	1
RD55L-60-025/300	55L-60 DN25 Pressure Relief Valve, 100-300PSI, UL	1



CLA-VAL DELUGE VALVE (MODEL 134-05)

- Globe or Angle Pattern
- UL Listed
- Threaded, Grooved and Flanged available
- Solenoid type

PART NUMBER	DESCRIPTION	BOX QTY
Datasheet No 11.30		
RD13405G-150/050	50mm Deluge vlv Solenoid type 134-05, ANSI Class 150 (Globe), UL	1
RD13405G-150/065	65mm Deluge vlv Solenoid type 134-05, ANSI Class 150 (Globe), UL	1
RD13405G-150/080	80mm Deluge vlv Solenoid type 134-05, ANSI Class 150 (Globe), UL	1
RD13405G-150/100	100mm Deluge vlv Solenoid type 134-05, ANSI Class 150 (Globe), UL	1
RD13405G-150/150	150mm Deluge vlv Solenoid type 134-05, ANSI Class 150 (Globe), UL	1
RD13405G-150/200	200mm Deluge vlv Solenoid type 134-05, ANSI Class 150 (Globe), UL	1
RD13405G-150/250	250mm Deluge vlv Solenoid type 134-05, ANSI Class 150 (Globe), UL	1
RD13405A-150/080	80mm Deluge vlv Solenoid type 134-05, ANSI Class 150 (Angle), UL	1
RD13405A-150/100	100mm Deluge vlv Solenoid type 134-05, ANSI Class 150 (Angle), UL	1
RD13405A-150/150	150mm Deluge vlv Solenoid type 134-05, ANSI Class 150 (Angle), UL	1
RD13405A-150/200	200mm Deluge vlv Solenoid type 134-05, ANSI Class 150 (Angle), UL	1
RD13405A-150/250	250mm Deluge vlv Solenoid type 134-05, ANSI Class 150 (Angle), UL	1

Class 300 also available



CLA-VAL DELUGE VALVE (MODEL 403-AZ)

- Globe or Angle Pattern
- UL Listed
- Threaded, Grooved and Flanged available
- Pneumatic type

PART NUMBER	DESCRIPTION	BOX QTY
Datasheet No. N/A		
RD403AZG-150/050	50mm Deluge vlv Pneumatic type 403-AZ, ANSI Class 150 (Globe), UL	1
RD403AZG-150/065	65mm Deluge vlv Pneumatic type 403-AZ, ANSI Class 150 (Globe), UL	1
RD403AZG-150/080	80mm Deluge vlv Pneumatic type 403-AZ, ANSI Class 150 (Globe), UL	1
RD403AZG-150/100	100mm Deluge vlv Pneumatic type 403-AZ, ANSI Class 150 (Globe), UL	1
RD403AZG-150/150	150mm Deluge vlv Pneumatic type 403-AZ, ANSI Class 150 (Globe), UL	1
RD403AZG-150/200	200mm Deluge vlv Pneumatic type 403-AZ, ANSI Class 150 (Globe), UL	1
RD403AZG-150/250	250mm Deluge vlv Pneumatic type 403-AZ, ANSI Class 150 (Globe), UL	1
RD403AZA-150/080	80mm Deluge vlv Pneumatic type 403-AZ, ANSI Class 150 (Angle), UL	1
RD403AZA-150/100	100mm Deluge vlv Pneumatic type 403-AZ, ANSI Class 150 (Angle), UL	1
RD403AZA-150/150	150mm Deluge vlv Pneumatic type 403-AZ, ANSI Class 150 (Angle), UL	1
RD403AZA-150/200	200mm Deluge vlv Pneumatic type 403-AZ, ANSI Class 150 (Angle), UL	1
RD403AZA-150/250	250mm Deluge vlv Pneumatic type 403-AZ, ANSI Class 150 (Angle), UL	1







DRY BARREL FIRE HYDRANT (RD-FM1510)

- FM approved
- Valves comply with AWWA C502.
- Working pressure 250 PSI.
- Working temperature 0.6 °C to 52 °C.
- Available flanged inlet, ANSI or PN16.
- Seating type is resilient material to bronze seat construction.
- One pump nozzle, 4.5-4NH thread. Two hose nozzle, 2.5-7.5NH thread. Other size thread is available.
- 6" mechanical joint designed to ANSI/AWWA C153/A21.53.

PART NUMBER	DESCRIPTION	BOX QTY
Datasheet No 12.05		
RDFM1510-915	Dry Barrel Fire Hydrant, fig1510, 3 way, 30" bury depth, FM	1
RDFM1510-1007	Dry Barrel Fire Hydrant, fig1510, 3 way, 42" bury depth, FM	1
RDFM1510-1220	Dry Barrel Fire Hydrant, fig1510, 3 way, 48" bury depth, FM	1
RDFM1510-1372	Dry Barrel Fire Hydrant, fig1510, 3 way, 54" bury depth, FM	1
RDFM1510-1524	Dry Barrel Fire Hydrant, fig1510, 3 way, 60" bury depth, FM	1
RDFM1510-1076	Dry Barrel Fire Hydrant, fig1510, 3 way, 66" bury depth, FM	1
RDFM1510-1824	Dry Barrel Fire Hydrant, fig1510, 3 way, 72" bury depth, FM	1

PRODUCT	ORDERING CODE		PRODUCT DESCRIPTION	BOX/ PALLET QTY
	RED PAINTED	GALVANISED		
Standard Rigid Coupling Model 1G & 1GS 	RD1G033	RD1G033G	Grooved rigid coupling 25mm (1") 33od Fig 1G	50/2000
	RD1G042	RD1G042G	Grooved rigid coupling 32mm (1¼") 42od Fig 1G	45/1800
	RD1G048	RD1G048G	Grooved rigid coupling 40mm (1½") 48od Fig 1G	40/1600
	RD1G060	RD1G060G	Grooved rigid coupling 50mm (2") 60od Fig 1G	35/1400
	RD1G076	RD1G076G	Grooved rigid coupling 65mm (2½") 76od Fig 1G	28/1120
	RD1GS089	RD1GS089G	Grooved rigid coupling light duty 80mm (3") 89od Fig 1GS	20/800
	RD1GS114	RD1GS114G	Grooved rigid coupling light duty 100mm (4") 114od Fig 1GS	14/560
	RD1G139	RD1G139G	Grooved rigid coupling 125mm (5") 139od Fig 1G	8/320
	RD1G168	RD1G168G	Grooved rigid coupling 150mm (6") 168od Fig 1G	6/240
	RD1G219	RD1G219G	Grooved rigid coupling 200mm (8") 219od Fig 1G	3/120
	RD1G273	RD1G273G	Grooved rigid coupling 250mm (10") 273od Fig 1G	1/32
RD1G323	RD1G323G	Grooved rigid coupling 300mm (12") 323od Fig 1G	1/24	
Data Sheet 8.51				
Standard Flexible Coupling Model 1N 	RD1N033	RD1N033G	Grooved flexible coupling 25mm (1") 33od Fig 1N	50/2000
	RD1N042	RD1N042G	Grooved flexible coupling 32mm (1¼") 42od Fig 1N	45/1800
	RD1N048	RD1N048G	Grooved flexible coupling 40mm (1½") 48od Fig 1N	40/1600
	RD1N060	RD1N060G	Grooved flexible coupling 50mm (2") 60od Fig 1N	35/1400
	RD1N076	RD1N076G	Grooved flexible coupling 65mm (2½") 76od Fig 1N	28/1120
	RD1N089	RD1N089G	Grooved flexible coupling 80mm (3") 89od Fig 1N	20/800
	RD1N114	RD1N114G	Grooved flexible coupling 100mm (4") 114od Fig 1N	12/480
	RD1N139	RD1N139G	Grooved flexible coupling 125mm (5") 139od Fig 1N	8/320
	RD1N168	RD1N168G	Grooved flexible coupling 150mm (6") 168od Fig 1N	6/240
	RD1N219	RD1N219G	Grooved flexible coupling 200mm (8") 219od Fig 1N	4/160
	RD1N273	RD1N273G	Grooved flexible coupling 250mm (10") 273od Fig 1N	1/32
	RD1N323	RD1N323G	Grooved flexible coupling 300mm (12") 323od Fig 1N	1/24
	Data Sheet 8.50			
Standard Reducing Flexible Couplings Model 1N 	RD1NR060048	RD1NR060048G	Grooved reducing coupling 50mm (2") 60od x40mm (1½") 48od Fig 1N	35/1400
	RD1NR076060	RD1NR076060G	Grooved reducing coupling 65mm (2½") 76od x50mm (2") 60od Fig 1N	28/1120
	RD1NR089060	RD1NR089060G	Grooved reducing coupling 80mm (3") 89od x50mm (2") 60od Fig 1N	20/800
	RD1NR089076	RD1NR089076G	Grooved reducing coupling 80mm (3") 89od x65mm (2½") 76od Fig 1N	20/800
	RD1NR114060	RD1NR114060G	Grooved reducing coupling 100mm (4") 114od x50mm (2") 60od Fig 1N	12/480
	RD1NR114076	RD1NR114076G	Grooved reducing coupling 100mm (4") 114od x65mm (2½") 76od Fig 1N	12/481
	RD1NR114089	RD1NR114089G	Grooved reducing coupling 100mm (4") 114od x80mm (3") 89od Fig 1N	12/482
	RD1NR168089	RD1NR168089G	Grooved reducing coupling 150mm (6") 168od x80mm (3") 89od Fig 1N	6/240
	RD1NR168114	RD1NR168114G	Grooved reducing coupling 150mm (6") 168od x100mm (4") 114od Fig 1N	6/240
	RD1NR219168	RD1NR219168G	Grooved reducing coupling 200mm (8") 219od x150mm (6") 168od Fig 1N	4/160
	Data Sheet 8.52			

PRODUCT	ORDERING CODE		PRODUCT DESCRIPTION	BOX/ PALLET QTY
	RED PAINTED	GALVANISED		
<p>90° Elbow Model 90 & 90s</p> <p>Data Sheet 8.53</p>	RD90L033	RD90L033G	Grooved 90° elbow 25mm (1") 33od Fig 90	90/3600
	RD90L042	RD90L042G	Grooved 90° elbow 32mm (1¼") 42od Fig 90	60/2400
	RD90L048	RD90L048G	Grooved 90° elbow 40mm (1½") 48od Fig 90	50/2000
	RD90S060	RD90S060G	Grooved 90° elbow short 50mm (2") 60od Fig 90S	32/1280
	RD90S076	RD90S076G	Grooved 90° elbow short 65mm (2½") 76od Fig 90S	18/720
	RD90S089	RD90S089G	Grooved 90° elbow short 80mm (3") 89od Fig 90S	10/400
	RD90S114	RD90S114G	Grooved 90° elbow short 100mm (4") 114od Fig 90S	6/240
	RD90S139	RD90S139G	Grooved 90° elbow short 125mm (5") 139od Fig 90S	2/80
	RD90S168	RD90S168G	Grooved 90° elbow short 150mm (6") 168od Fig 90S	2/80
	RD90S219	RD90S219G	Grooved 90° elbow short 200mm (8") 219od Fig 90S	1/18
	RD90L273	RD90L273G	Grooved 90° elbow 250mm (10") 273od Fig 90	1/8
RD90L323	RD90L323G	Grooved 90° elbow 300mm (12") 323od Fig 90	1/4	
<p>45° Elbow Model 120</p> <p>Data Sheet 8.55</p>	RD120L033	RD120L033	Grooved 45° elbow 25mm (1") 33od Fig 120	100/4000
	RD120L042	RD120L042	Grooved 45° elbow 32mm (1¼") 42od Fig 120	90/3600
	RD120L048	RD120L048	Grooved 45° elbow 40mm (1½") 48od Fig 120	60/2400
	RD120L060	RD120L060	Grooved 45° elbow 50mm (2") 60od Fig 120	36/1440
	RD120L076	RD120L076	Grooved 45° elbow 65mm (2½") 76od Fig 120	24/960
	RD120L089	RD120L089	Grooved 45° elbow 80mm (3") 89od Fig 120	12/480
	RD120L114	RD120L114	Grooved 45° elbow 100mm (4") 114od Fig 120	8/320
	RD120L139	RD120L139	Grooved 45° elbow 125mm (5") 139od fig 120	2/80
	RD120L168	RD120L168	Grooved 45° elbow 150mm (6") 168od Fig 120	2/80
	RD120L219	RD120L219	Grooved 45° elbow 200mm (8") 219od Fig 120	1/40
	RD120L273	RD120L273	Grooved 45° elbow 250mm (10") 273od Fig 120	1/24
RD120L323	RD120L323	Grooved 45° elbow 300mm (12") 323od Fig 120	1/4	
<p>Equal Tee Model 130 & 130s</p> <p>Data Sheet 8.56</p>	RD130L033	RD130L033G	Grooved equal tee 25mm (1") 33od painted Fig 130	60/2400
	RD130L042	RD130L042G	Grooved equal tee 32mm (1¼") 42od painted Fig 130	40/1600
	RD130L048	RD130L048G	Grooved equal tee 40mm (1½") 48od painted Fig 130	35/1400
	RD130S060	RD130S060G	Grooved equal tee short 50mm (2") 60od painted Fig 130S	18/720
	RD130S076	RD130S076G	Grooved equal tee short 65mm (2½") 76od painted Fig 130S	12/480
	RD130S089	RD130S089G	Grooved equal tee short 80mm (3") 89od painted Fig 130S	6/240
	RD130S114	RD130S114G	Grooved equal tee short 100mm (4") 114od painted Fig 130S	4/160
	RD130S139	RD130S139G	Grooved equal tee short 125mm (5") 139od painted fig 130S	2/80
	RD130S168	RD130S168G	Grooved equal tee short 150mm (6") 168od painted Fig 130S	1/40
	RD130S219	RD130S219G	Grooved equal tee short 200mm (8") 219od painted fig 130S	14/14
	RD130L273	RD130L273G	Grooved equal tee 250mm (10") 273od painted Fig 130	1/8
RD130L323	RD130L323G	Grooved equal tee 300mm (12") 323od painted Fig 130	1/4	

PRODUCT	ORDERING CODE		PRODUCT DESCRIPTION	BOX/ PALLET QTY	
	RED PAINTED	GALVANISED			
Mechanical Tee Grooved Outlet Model 3G  	RD3G060042	RD3G060042G	Grooved mechanical tee 50mm (2") 60od x32mm (1¼") 42od Fig 3G	28/1120	
	RD3G060048	RD3G060048G	Grooved mechanical tee 50mm (2") 60od x40mm (1½") 48od Fig 3G	28/1120	
	RD3G076042	RD3G076042G	Grooved mechanical tee 65mm (2½") 76od x32mm (1¼") 42od Fig 3G	22/880	
	RD3G076048	RD3G076048G	Grooved mechanical tee 65mm (2½") 76od x40mm (1½") 48od Fig 3G	22/880	
	RD3G089042	RD3G089042G	Grooved mechanical tee 80mm (3") 89od x32mm (1¼") 42od Fig 3G	14/560	
	RD3G089048	RD3G089048G	Grooved mechanical tee 80mm (3") 89od x40mm (1½") 48od Fig 3G	14/560	
	RD3G089060	RD3G089060G	Grooved mechanical tee 80mm(3") 89od x50mm (2") 60od Fig 3G	14/560	
	RD3G114042	RD3G114042G	Grooved mechanical tee 100mm (4") 114odx32mm (1¼") 42od Fig 3G	12/480	
	RD3G114048	RD3G114048G	Grooved mechanical tee 100mm (4") 114odx40mm (1½") 48od Fig 3G	12/480	
	RD3G114060	RD3G114060G	Grooved mechanical tee 100mm (4") 114od x50mm (2") 60od Fig 3G	9/360	
	RD3G114076	RD3G114076G	Grooved mechanical tee 100mm (4") 114od x65mm (2½") 76od Fig 3G	9/360	
	RD3G114089	RD3G114089G	Grooved mechanical tee 100mm (4") 114od x80mm (3") 89od Fig 3G	7/280	
	RD3G139060	RD3G139060G	Grooved mechanical tee 125mm (5") 139od x50mm (2") 60od Fig 3G	4/160	
	RD3G139076	RD3G139076G	Grooved mechanical tee 125mm (5") 139od x65mm (2½") 76od Fig 3G	4/160	
	RD3G139089	RD3G139089G	Grooved mechanical tee 125mm (5") 139od x80mm (3") 89od Fig 3G	3/120	
	RD3G168042*	RD3G168042G	Grooved mechanical tee 150mm (6") 168od x32mm (1¼") 42od Fig 3G	7/280	
	RD3G168048	RD3G168048G	Grooved mechanical tee 150mm (6") 168od x40mm (1½") 48od Fig 3G	6/240	
	RD3G168060	RD3G168060G	Grooved mechanical tee 150mm (6") 168od x50mm (2") 60od Fig 3G	4/160	
	RD3G168076	RD3G168076G	Grooved mechanical tee 150mm (6") 168od x65mm (2.1/2") 76od Fig 3G	4/160	
	RD3G168089	RD3G168089G	Grooved mechanical tee 150mm (6") 168od x80mm (3") 89od Fig 3G	4/160	
	RD3G168114	RD3G168114G	Grooved mechanical tee 150mm (6") 168od x100mm (4") 114od Fig 3G	3/120	
	RD3G219076	RD3G219076G	Grooved mechanical tee 200mm (8") 219od x65mm (2½") 76od Fig 3G	2/80	
	RD3G219060	RD3G219060G	Grooved mechanical tee 200mm (8") 219od x50mm (2") 60od Fig 3G	2/80	
RD3G219089	RD3G219089G	Grooved mechanical tee 200mm (8") 219od x80mm (3") 89od Fig 3G	2/80		
RD3G219114	RD3G219114G	Grooved mechanical tee 200mm (8") 219od x100mm (4") 114od Fig 3G	2/80		
Data Sheet 8.59					
Mechanical Tee Threaded Outlet Model 3J  	RD3J060025	RD3J060025G	Threaded mechanical tee 50mm (2") 60od x1" BSP Fig 3J	28/1120	
	RD3J060032	RD3J060032G	Threaded mechanical tee 50mm (2") 60od x1¼" BSP Fig 3J	28/1120	
	RD3J060040	RD3J060040G	Threaded mechanical tee 50mm (2") 60od x1½" BSP Fig 3J	28/1120	
	RD3J076025	RD3J076025G	Threaded mechanical tee 65mm (2½") 76od x1" BSP Fig 3J	22/880	
	RD3J076032	RD3J076032G	Threaded mechanical tee 65mm (2½") 76od x1¼" BSP Fig 3J	22/880	
	RD3J076040	RD3J076040G	Threaded mechanical tee 65mm (2½") 76od x1½" BSP Fig 3J	22/880	
	RD3J089025	RD3J089025G	Threaded mechanical tee 80mm (3") 89od x1" BSP Fig 3J	14/560	
	RD3J089032	RD3J089032G	Threaded mechanical tee 80mm (3") 89od x1¼" BSP Fig 3J	14/560	
	RD3J089040	RD3J089040G	Threaded mechanical tee 80mm (3") 89od x1½" BSP Fig 3J	14/560	
	RD3J089050	RD3J089050G	Threaded mechanical tee 80mm (3") 89od x2" BSP Fig 3J	14/560	
	RD3J114025	RD3J114025G	Threaded mechanical tee 100mm (4") 114od x1" BSP Fig 3J	12/480	
	Data Sheet 8.61				

PRODUCT	ORDERING CODE		PRODUCT DESCRIPTION	BOX/ PALLET QTY
	RED PAINTED	GALVANISED		
<p>Mechanical Tee Threaded Outlet Model 3J</p> <p>Data Sheet 8.61</p>	RD3J114032	RD3J114032G	Threaded mechanical tee 100mm (4") 114od x1¼" BSP Fig 3J	12/480
	RD3J114040	RD3J114040G	Threaded mechanical tee 100mm (4") 114od x1½" BSP Fig 3J	12/480
	RD3J114050	RD3J114050G	Threaded mechanical tee 100mm (4") 114od x2" BSP Fig 3J	10/400
	RD3J114065	RD3J114065G	Threaded mechanical tee 100mm (4") 114od x2½" BSP Fig 3J	9/360
	RD3J114080	RD3J114080G	Threaded mechanical tee 100mm (4") 114od x3" BSP Fig 3J	7/280
	RD3J139032	RD3J139032G	Threaded mechanical tee 125mm (5") 139od x1¼" BSP Fig 3J	4/160
	RD3J168032	RD3J168032G	Threaded mechanical tee 150mm (6") 168od x1¼" BSP Fig 3J	6/240
	RD3J168040	RD3J168040G	Threaded mechanical tee 150mm (6") 168od x1½" BSP Fig 3J	6/240
	RD3J168050	RD3J168050G	Threaded mechanical tee 150mm (6") 168od x2" BSP Fig 3J	4/160
	RD3J168065	RD3J168065G	Threaded mechanical tee 150mm (6") 168od x2½" BSP Fig 3J	4/160
	RD3J168080	RD3J168080G	Threaded mechanical tee 150mm (6") 168od 3" BSP Fig 3J	4/160
	RD3J219050	RD3J219050G	Threaded mechanical tee 200mm (8") 219od x2" BSP Fig 3J	3/120
	RD3J219065	RD3J219065G	Threaded mechanical tee 150mm (6") 168od x2½" BSP Fig 3J	3/120
	RD3J219080	RD3J219080G	Threaded mechanical tee 150mm (6") 168od x3" BSP Fig 3J	3/120
<p>U-Bolt Mechanical Tee Model 3L</p> <p>Data Sheet 8.63</p>	RD3L3215	RD3L3215G	Mechanical tee U bolt 32mm (1¼") 42od x ½" BSP Fig 3L	50/2000
	RD3L3220	RD3L3220G	Mechanical tee U bolt 32mm (1¼") 42od x ¾" BSP Fig 3L	50/2000
	RD3L3225	RD3L3225G	Mechanical tee U bolt 32mm (1¼") 42od x 1" BSP Fig 3L	50/2000
	RD3L4015	RD3L4015G	Mechanical tee U bolt 40mm (1½") 48od x ½" BSP Fig 3L	50/2000
	RD3L4020	RD3L4020G	Mechanical tee U bolt 40mm (1½") 48od x ¾" BSP Fig 3L	50/2000
	RD3L4025	RD3L4025G	Mechanical tee U bolt 40mm (1½") 48od x 1" BSP Fig 3L	50/2000
	RD3L5015	RD3L5015G	Mechanical tee U bolt 50mm (2") 60od x ½" BSP Fig 3L	45/1800
	RD3L5020	RD3L5020G	Mechanical tee U bolt 50mm (2") 60od x ¾" BSP Fig 3L	45/1800
	RD3L5025	RD3L5025G	Mechanical tee U bolt 50mm (2") 60od x 1" BSP Fig 3L	45/1800
	RD3L7615	RD3L7615G	Mechanical tee U bolt 65mm (2½") 76od x ½" BSP Fig 3L	40/1600
	RD3L7620	RD3L7620G	Mechanical tee U bolt 65mm (2½") 76od x ¾" BSP Fig 3L	40/1600
	RD3L7625	RD3L7625G	Mechanical tee U bolt 65mm (2½") 76od x 1" BSP Fig 3L	40/1600
<p>Grooved Concentric Reducer Model 240</p> <p>Data Sheet 8.65</p>	RD240G042033	RD240G042033G	Grooved concentric reducer 32mm (1¼") 42od x25mm (1") 33od Fig 240	100/4000
	RD240G048033	RD240G048033G	Grooved concentric reducer 40mm (1½") 48od x25mm (1") 33od Fig 240	100/4000
	RD240G048042	RD240G048042G	Grooved concentric reducer 40mm (1½") 48od x32mm (1¼") 42od Fig 240	100/4000
	RD240G060042	RD240G060042G	Grooved concentric reducer 50mm (2") 60od x32mm (1¼") 42od Fig 240	60/2400
	RD240G060048	RD240G060048G	Grooved concentric reducer 50mm (2") 60od x40mm (1½") 48od Fig 240	60/2400
	RD240G076033	RD240G076033G	Grooved concentric reducer 65mm (2½") 76od x25mm (1") 33od Fig 240	50/2000
	RD240G076042	RD240G076042G	Grooved concentric reducer 65mm (2½") 76od x32mm (1¼") 42od Fig 240	50/2000
	RD240G076048	RD240G076048G	Grooved concentric reducer 65mm (2½") 76od x40mm (1½") 48od Fig 240	50/2000

PRODUCT	ORDERING CODE		PRODUCT DESCRIPTION	BOX/ PALLET QTY
	RED PAINTED	GALVANISED		
Grooved Concentric Reducer Model 240 	RD240G076060	RD240G076060G	Grooved concentric reducer 65mm (2½") 76od x50mm (2") 60od Fig 240	50/2000
	RD240G089033	RD240G089033G	Grooved concentric reducer 80mm (3") 89od x25mm (1") 33od Fig 240	44/1760
	RD240G089042	RD240G089042G	Grooved concentric reducer 80mm (3") 89od x32mm (1¼") 42od Fig 240	44/1760
	RD240G089048	RD240G089048G	Grooved concentric reducer 80mm (3") 89od x40mm (1½") 48od Fig 240	44/1760
	RD240G089060	RD240G089060G	Grooved concentric reducer 80mm (3") 89od x50mm (2") 60od Fig 240	44/1760
	RD240G089076	RD240G089076G	Grooved concentric reducer 80mm (3") 89od x65mm (2½") 76od Fig 240	44/1760
	RD240G114048	RD240G114048G	Grooved concentric reducer 100mm (4") 114od x40mm (1½") 48od Fig 240	25/1000
	RD240G114060	RD240G114060G	Grooved concentric reducer 100mm (4") 114od x50mm (2") 60od Fig 240	25/1000
	RD240G114076	RD240G114076G	Grooved concentric reducer 100mm (4") 114od x65mm (2½") 76od Fig 240	18/720
	RD240G114089	RD240G114089G	Grooved concentric reducer 100mm (4") 114od x80mm (3") 89od Fig 240	18/720
	RD240G139060	RD240G139060G	Grooved concentric reducer 125mm (5") 139od x50mm (2") Fig 240	12/480
	RD240G139076	RD240G139076G	Grooved concentric reducer 125mm (5") 139od x65mm (2½") 76od Fig 240	12/480
	RD240G139089	RD240G139089G	Grooved concentric reducer 125mm (5") 139od x80mm (3") 89od Fig 240	12/480
	RD240G139114	RD240G139114G	Grooved concentric reducer 125mm (5") 139od x100mm (4") 114od Fig 240	12/480
	RD240G168060	RD240G168060G	Grooved concentric reducer 150mm (6") 168od x50mm (2") 60od Fig 240	8/320
	RD240G168076	RD240G168076G	Grooved concentric reducer 150mm (6") 168od x65mm (2½") 76od Fig 240	8/320
	RD240G168089	RD240G168089G	Grooved concentric reducer 150mm (6") 168od x80mm (3") 89od Fig 240	8/320
	RD240G168114	RD240G168114G	Grooved concentric reducer 150mm (6") 168od x100mm (4") 114od Fig 240	8/320
	RD240G168139	RD240G168139G	Grooved concentric reducer 150mm (6") 168od x125mm (5") 139od Fig 240	6/240
	RD240G219089	RD240G219089G	Grooved concentric reducer 200mm (8") 219od x80mm (3") 89od Fig 240	4/160
RD240G219114	RD240G219114G	Grooved concentric reducer 200mm (8") 219od x100mm (4") 114od Fig 240	4/160	
RD240G219168	RD240G219168G	Grooved concentric reducer 200mm (8") 219od x150mm (6") 168od Fig 240	4/160	
RD240G273168	RD240G273168G	Grooved concentric reducer 250mm (10") 273od x150mm (6") 168od Fig 240	1/28	
RD240G273219	RD240G273219G	Grooved concentric reducer 250mm (10") 273od x200mm (8") 219od Fig 240	1/28	
Data Sheet 8.65				
Grooved End Cap Model 300 	RD300P033	RD300P033G	Grooved end cap 25mm (1") 33od Fig 300	200/8000
	RD300P042	RD300P042G	Grooved end cap 32mm (1¼") 42od Fig 300	150/6000
	RD300P048	RD300P048G	Grooved end cap 40mm (1½") 48od Fig 300	100/4000
	RD300P060	RD300P060G	Grooved end cap 50mm (2") 60od Fig 300	80/3200
	RD300P076	RD300P076G	Grooved end cap 65mm (2½") 76od Fig 300	60/2400
	RD300P089	RD300P089G	Grooved end cap 80mm (3") 89od Fig 300	50/2000
	RD300P114	RD300P114G	Grooved end cap 100mm (4") 114od Fig 300	30/1200
	RD300P139	RD300P139G	Grooved end cap 125mm (5") 139od Fig 300	20/800
	RD300P168	RD300P168G	Grooved end cap 150mm (6") 168od Fig 300	12/480
	RD300P219	RD300P219G	Grooved end cap 200mm (8") 219od Fig 300	8/320
	RD300P273	RD300P273G	Grooved end cap 250mm (10") 273od Fig 300	1/70
	RD300P323	RD300P323G	Grooved end cap 300mm (12") 323od Fig 300	1/50
	Data Sheet 8.68			

PRODUCT	ORDERING CODE		PRODUCT DESCRIPTION	BOX/ PALLET QTY
	RED PAINTED	GALVANISED		
Cap with Eccentric Hole Model 300PX Data Sheet 8.72	RD300PX076025	RD300PX076025G	End cap with eccentric hole 65mm (2½") 76od x 1" BSP Fig 300PX	60/2400
	RD300PX076040	RD300PX076040G	End cap with eccentric hole 65mm (2½") 76od x 1½" BSP Fig 300PX	60/2400
	RD300PX076050	RD300PX076050G	End cap with eccentric hole 65mm (2½") 76od x 2" BSP Fig 300PX	60/2400
	RD300PX089025	RD300PX089025G	End cap with eccentric hole 80mm (3") 89od x 1" BSP Fig 300PX	50/2000
	RD300PX089040	RD300PX089040G	End cap with eccentric hole 80mm (3") 89od x 1½" BSP Fig 300PX	50/2000
	RD300PX089050	RD300PX089050G	End cap with eccentric hole 80mm (3") 89od x 2" BSP Fig 300PX	50/2000
	RD300PX114040	RD300PX114040G	End cap with eccentric hole 100mm (4") 114od x 1½" BSP Fig 300PX	30/1200
	RD300PX114050	RD300PX114050G	End cap with eccentric hole 100mm (4") 114od x 2" BSP Fig 300PX	30/1200
	RD300PX139040	RD300PX139040G	End cap with eccentric hole 125mm (5") 139od x 1½" BSP Fig 300PX	20/800
	RD300PX139050	RD300PX139050G	End cap with eccentric hole 125mm (5") 139od ptd x 2" BSP Fig 300PX	20/800
	RD300PX168040	RD300PX168040G	End cap with eccentric hole 150mm (6") 168od x 1½" BSP Fig 300PX	12/480
	RD300PX168050	RD300PX168050G	End cap with eccentric hole 150mm (6") 168od x 2" BSP Fig 300PX	12/480
	RD300PX219040	RD300PX219040G	End cap with eccentric hole 200mm (8") 219od x 1½" BSP Fig 300PX	8/320
	RD300PX219050	RD300PX219050G	End cap with eccentric hole 200mm (8") 219od x 2" BSP Fig 300PX	8/320
Grooved Flange Model 321 PN16 Data Sheet 8.69	RD321P048	RD321P048G	Grooved split flange adaptor 40mm (1½") 48od PN16 Fig 321	15/600
	RD321P060	RD321P060G	Grooved split flange adaptor 50mm (2") 60od PN16 Fig 321	12/480
	RD321P076	RD321P076G	Grooved split flange adaptor 65mm (2½") 76od PN16 Fig 321	12/480
	RD321P089	RD321P089G	Grooved split flange adaptor 80mm (3") 89od PN16 Fig 321	10/400
	RD321P114	RD321P114G	Grooved split flange adaptor 100mm (4") 114od PN16 Fig 321	10/400
	RD321P139	RD321P139G	Grooved split flange adaptor 125mm (5") 139.7od PN16 Fig 321	7/280
	RD321P168	RD321P168G	Grooved split flange adaptor 150mm (6") 168od PN16 Fig 321	6/240
	RD321P219	RD321P219G	Grooved split flange adaptor 200mm (8") 219od PN16 Fig 321	1/80
	RD321P272	RD321P272G	Grooved split flange adaptor 250mm (10") 273od PN16 Fig 321	1/40
Grooved Adaptor Flange Model 321G PN16 Data Sheet 8.71	RD321G060	RD321G060G	Grooved stub flange adaptor PN16 60mm(2") Fig 321G	12/480
	RD321G076	RD321G076G	Grooved stub flange adaptor PN16 65mm(2½")76od Fig 321G	6/240
	RD321G089	RD321G089G	Grooved stub flange adaptor PN16 80mm(3") Fig 321G	6/240
	RD321G114	RD321G114G	Grooved stub flange adaptor PN16 100mm(4") Fig 321G	4/160
	RD321G168	RD321G168G	Grooved stub flange adaptor PN16 150mm (6") Fig 321G	1/48
	RD321G219	RD321G219G	Grooved stub flange adaptor PN16 219mm(8") Fig 321G	1/30
	RD321G273	RD321G273G	Grooved stub flange adaptor PN16 273mm(10") Fig 321G	1/27

General Description

Medium Velocity Water Spray Nozzles are open type (nonautomatic) nozzles, designed for directional spray application in fixed fire protection system.

Medium velocity water spray nozzle has an external deflector, which discharges water in a directional cone shaped pattern of small droplet size. The water is uniformly distributed over the surface to be protected.

The Nozzles are effectively designed to apply water to exposed vertical, horizontal, curved and irregular shaped surfaces to allow cooling to prevent excessive absorption of heat from external fire and avoid structural damage or spread of fire. In some application nozzles may be installed to control or extinguish the fire depending on water design density as per applicable codes. The nozzle is used in deluge water spray system for special hazard fire protection application.

As the design and intent of specific water spray system may vary considerably, MV nozzle is made available in several combinations of orifice sizes and spray angles.

The minimum desirable pressure to achieve a reasonable spray pattern is 1.4 Kg./Sq.cm. The water distribution pattern as shown in the graph in following pages is at an average pressure of 2.0 Kg/ Sq.cm. The change in pressure between 1.4 to 3.5 Kg./sq.cm. does not affect considerable change in spray angle.

The spray pattern shown is with indoor application. System designer must consider wind velocity while designing the system for outdoor application. Field obstruction if any affecting the spray pattern of the nozzle must also be considered. The nozzle may be oriented to any position as deemed necessary to cover the hazard.

The Blow-off plugs can be used to prevent the depositing of foreign materials in the water way of the nozzles, which could interfere with discharge of the spray nozzle. Blow-off plugs are optional and are FM Approved. Blow-off Plugs have identification mark with respect to K factor. Blow off plug for nozzle having K-factor 22 will have identification mark of 22. Minimum operating pressure for nozzle having Blow-off plug is 1.4 Kg./Sq.cm (20 PSI).

The main pipeline strainer as per NFPA-15 is required for system utilizing nozzle orifice diameter less than 9.5mm (3/8 inch), i.e.MV Nozzle having K-factor 51 and less, and also for the system water likely to contain obstructive materials.

Rapidrop Medium Velocity Water Spray Nozzles are available to order in a wide range of K-Factors, spray angles, finishes, models and end connections. Please enquire for more information.



Technical Details

Model	MV-A, MV-AS Brass MV-B & MV-BS Stainless Steel MV-E Aluminium Bronze																								
Type	MV-A, MV-B & MV-E (without strainer) MV-AS & MV-BS (with strainer)																								
Maximum Working Pressure	12 bar (175 psi)																								
End Connection	½" BSPT (½" NPT optional)																								
Included Water Spray Angle For Each K-Factor	140°, 120°, 110°, 100°, 90°, 80° & 65°																								
K-Factor	<table border="0"> <tr> <td>MV-A/MV-B & MV-E</td> <td>MV-AS/MV-BS</td> </tr> <tr> <td>Metric(US)</td> <td>Metric(US)</td> </tr> <tr> <td>K-18 (1.26)</td> <td>K-18 (1.26)</td> </tr> <tr> <td>K-22 (1.54)</td> <td>K-22 (1.54)</td> </tr> <tr> <td>K-30 (2.10)</td> <td>K-30 (2.10)</td> </tr> <tr> <td>K-35 (2.45)</td> <td>K-35 (2.45)</td> </tr> <tr> <td>K-41 (2.87)</td> <td>K-41 (2.87)</td> </tr> <tr> <td>K-51 (3.57)</td> <td></td> </tr> <tr> <td>K-64 (4.48)</td> <td></td> </tr> <tr> <td>K-79 (5.53)</td> <td></td> </tr> <tr> <td>K-91 (6.37)</td> <td></td> </tr> <tr> <td>K-102 (7.14)</td> <td></td> </tr> </table>	MV-A/MV-B & MV-E	MV-AS/MV-BS	Metric(US)	Metric(US)	K-18 (1.26)	K-18 (1.26)	K-22 (1.54)	K-22 (1.54)	K-30 (2.10)	K-30 (2.10)	K-35 (2.45)	K-35 (2.45)	K-41 (2.87)	K-41 (2.87)	K-51 (3.57)		K-64 (4.48)		K-79 (5.53)		K-91 (6.37)		K-102 (7.14)	
MV-A/MV-B & MV-E	MV-AS/MV-BS																								
Metric(US)	Metric(US)																								
K-18 (1.26)	K-18 (1.26)																								
K-22 (1.54)	K-22 (1.54)																								
K-30 (2.10)	K-30 (2.10)																								
K-35 (2.45)	K-35 (2.45)																								
K-41 (2.87)	K-41 (2.87)																								
K-51 (3.57)																									
K-64 (4.48)																									
K-79 (5.53)																									
K-91 (6.37)																									
K-102 (7.14)																									
Weight	110 g. (approximately)																								
Finish	MV-A & MV-AS Natural Brass finish, Chrome plated Nickel, Electroless Nickel plated, Epoxy powder coated. MV-B, MV-BS & MV-E Natural finish																								
Approvals	Nozzle - UL Listed, FM Approved Blow-off Plug - FM Approved																								
Ordering Information	Specify K-Factor, spray angle, finish, model and end connection																								

General Description

High Velocity Water Spray Nozzles are internal swirl plate type open nozzles designed for use in fixed water spray or deluge system for the fire protection application.

These nozzles produce solid uniform and dense core of high velocity water spray to effect fire control. Nozzles are normally used to cool the surface as well as for extinguishment. Nozzles are typically used for Deluge protection of special hazards such as oil filled transformers, switch-gear, chemical process equipments, conveyor system and flammable liquid storage areas. The minimum desirable pressure to achieve a reasonable spray pattern is 3.5 Kg./sq.cm. (50 psi). The water distribution pattern is as shown in the graph in following pages giving maximum effective axial distance from the nozzle. The spray pattern shown is with indoor application. The system designer must consider wind velocity while designing the system for outdoor application. Field obstruction if any affecting the spray pattern of the nozzle must be considered. The nozzle may be oriented in any position as deemed necessary to cover the hazard.

3.5 bar to 7 bar pressure at Nozzle is recommended for effective application requiring High Velocity Water delivery for rapid extinguishment of all fires by emulsification.

The Nozzles are having inbuilt Strainer, but still main pipeline strainer is required in the system. The Blow-off cap can be used to prevent the depositing of foreign material in the water way of the nozzle. Use of Blow-off cap is optional and not UL listed.

Maintenance

The spray nozzle must be handled with due care. For best results, the storage as well as any further shipment be made in original packing only. Nozzle which is visibly damaged should not be installed. Use Teflon tape or soft thread sealant on the male thread of the nozzle. It is recommended that the water spray system be inspected by an authorised technical personnel. The nozzle must be checked for corrosion, external and internal obstruction, blockage if any. The nozzle should be cleaned or replaced if required. The system must be operated with optimum water flow at least three times in a year or as per the provision of NFPA/TAC or local authority having jurisdiction. The owner is solely responsible for maintaining the water spray system and components therein, so that it performs properly when required.

Rapidrop High Velocity Water Spray Nozzles are available to order in a wide range of K-Factors, spray angles, finishes and models. Please enquire for more information.



Technical Details

Model	HV-AS & HV-BS	
Maximum Working Pressure	12 Bar (175 PSI)	
Effective Working Pressure	3.5 Bar to 10.5 Bar (50 - 150 PSI)	
End Connections	¾" BSPT (¾" NPT Optional)	
Material	HV-AS Housing & Scroll - Brass IS : 291 (Equivalent to ASTM B21) Strainer - Copper	
	HV-BS Stainless Steel CF8M (SS316)	
Included Water Spray Angle and K-Factor	Spray angle	K-Factor metric (US)
	75°	22 (1.54)
	80°	18 (1.26)
	90°	32 (2.24)
	100°	26 (1.82)
	115°	42 (2.94)
120°	23 (1.61)	
Weight (Approx)	200 g	
Finish	Natural Finish	
	Nickel Plated* Chrome Plated* *Optional for HV-AS	
Approvals	UL Listed	
Ordering Informations	Specify Model, K-Factor, Spray angle and Finish	



Europe	UK	Middle East & North Africa
<p>Rapidrop Europe Ltd Harcourt Centre Block 3 Dublin 2 Ireland</p> <p>Telephone: +353 1 447 0550 Facsimile: +44 (0)1733 553 958 E-mail: rapidrop@rapidrop.com</p>	<p>Rapidrop Global Ltd Head Office Rutland Business Park Newark Road Peterborough PE1 5WA United Kingdom</p> <p>Telephone: +44 (0)1733 847 510 Facsimile: +44 (0)1733 553 958 E-mail: rapidrop@rapidrop.com</p>	<p>Rapidrop Middle East Trading LLC P.O Box 232031 Dubai - UAE Telephone: +971 4 8856671 Facsimile: +971 4 8856672 Sharjah - Sales Office Telephone : +9716 5562669 Abu Dhabi - Sales Office Telephone : + 971 2 5528228 E-mail: uae@rapidrop.com</p>
Qatar	India	Asia Pacific
<p>Rapidrop Qatar LLC Salwa Road P.O.Box 17481 Doha Qatar</p> <p>Telephone: +974 4 0161484/482 Facsimile: +974 4 0161483 E-mail: uae@rapidrop.com</p>	<p>Rapidrop India Pvt Ltd Level 13, Office No. 1348 Platinum Techno Park Plot No.17/18, Sector -30A Vashi, Navi Mumbai, 400705 India</p> <p>Telephone: +91 22 61818348 Facsimile: +91 22 61214952 E-mail: rapidrop@rapidrop.com</p>	<p>Rapidrop International P.O Box 232031 Dubai - UAE</p> <p>Telephone: +971 6 566 2773 Facsimile: +971 4 8856672 E-mail: rdi@rapidrop.com</p>
South Africa	Saudi Arabia	Approvals
<p>Rapidrop Global Ltd Dachser South Africa (Pty) Ltd South Africa Country Office Air & Sea Logistics 9 Sim Road Pomona, Kempton Park 1619 Office Telephone: +27(0)11 396 1113 Telephone: +27(0)727601627 E-mail: rapidrop@rapidrop.com</p>	<p>Sales Office Imam Saud Road Cross Abu Berker Aj Siddiq PO BOX 54092 Riyadh 11514 Kingdom of Saudi Arabia</p> <p>Telephone: +966 5569 80094 E-mail: saudi@rapidrop.com</p>	<p>The Rapidrop range includes products which have internationally recognised approvals and listings from FM/UL/VDS and LPCB.</p> <p>      </p>

v1.0