



Malleable Iron Pipe Fittings

Material

Malleable Cast Iron

*Ductile Iron (Optional)

Standards

- ASTM A-197, ASTM A47
- BS EN 1562

Working Pressure

Class 150 - Max. Working Pressure 20.7 bar (300 psi)

Class 300 - Max. Working Pressure 34.5 bar (500 psi)

Threads

ISO 7-1

Finish

HDF - Standard

*Electroplated (Optional)

*Black (Optional)

Sizes Available

DN6 (1/8") to DN150 (6")

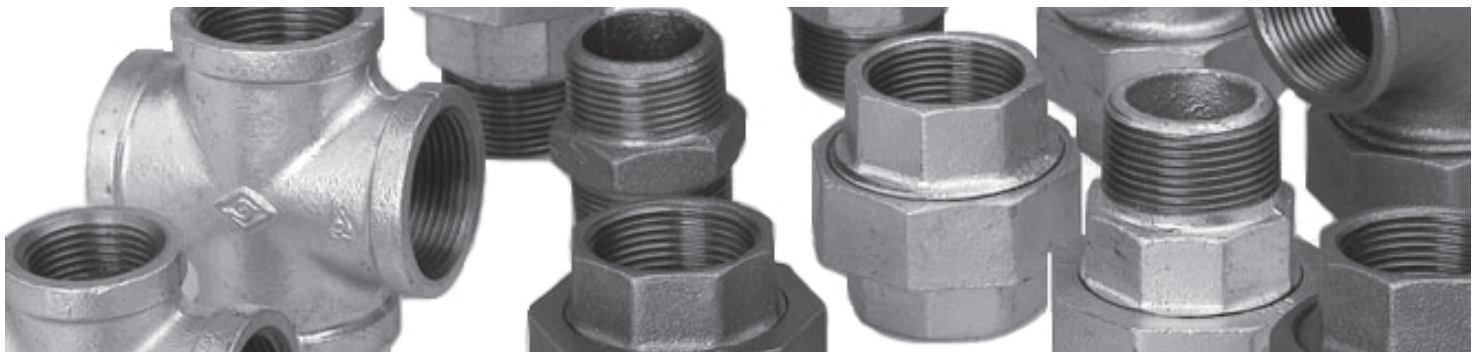
Note: Due to size constraints UL/FM markings are not available on all items 1/2" & below



Pressure - Temperature Ratings

Temperature °F	Class 150, psi	Class 300, psi		
		Size	Size	Size
		1/4" - 1"	1 1/4" - 2"	2 1/2" - 3"
20 to 150	300	2000	1500	1000
200	265	1785	1350	910
250	225	1575	1200	825
300	185	1360	1050	735
350	150*	1150	900	650
400	20 to 150	935	750	580
450	20 to 150	725	600	475
500	20 to 150	510	450	585
550	20 to 150	300	300	300

*Permissible for service temperature up to 366 °F, Reflecting the temperature of saturated steam at 150 psi.



Malleable Iron Pipe Fittings

No	Description	Model	Page No.
1	 90° Elbow	90	4
2	 90° Reducing Elbow	90R	4, 5
3	 90° Street Elbow	92	5
4	 Union Elbow FxF Conical Joint Iron to Iron	96	6
5	 Union Elbow MxF Conical Joint Iron to Iron	98	6
6	 45° Elbow	120	6
7	 Tee	130	7
8	 Reducing Tee	130R	8
9	 Reducing Tee	130R	8
10	 Reducing Tee	130R	10
11	 Reducing Tee	130R	11
12	 Reducing Tee	130R	12
13	 Service Tee	134	13
14	 45° Lethal Y Branch	165	13
15	 Cross	180	13

No	Description	Model	Page No.
16	 Reducing Cross	180R	14
17	 Socket	220	14
18	 Reducing Socket	240	15
19	 Bushing	241	16
20	 Parallel Thread Socket	270	17
21	 Hexagon Nipple	280	18
22	 Plain Plug	291	18
23	 Cap	300	18
24	 Locknut	310	19
25	 Flange BS 4504	321-4	19
26	 Flange 1600/4	321-6	19
27	 Flange	321-H	20
28	 Flange DRP D	321P	20
29	 Flange U/D	321PW	21
30	 Flange BS Table D	321TD	21

Malleable Iron Pipe Fittings

No	Description	Model	Page No.
31	 Flat Seat Union without gasket	330	22
32	 Conical Union Fitting Iron to Iron	340	22
33	 Conical Union Fitting MxF Iron to Iron	341	23
34	 Conical Union Fitting Brass to Iron	342	23
35	 Long Extension Piece	529A	24
36	 Short Extension Piece	529X	24
37	 Side Outlet Elbow	1221	24
38	 Side Outlet Tee	1223	24
39	 Side Outlet Cross	1224	25
40	 Long Compression Coupling	LCC	25
41	 Short Compression Coupling	SCC	25
42	 Compression Tee	TCC	25

Malleable Iron Pipe Fittings

90

90° Elbow



90R

90° Reducing Elbow



Dimensions

Size		Dimensions A	Max Working Pressure bar (psi)	
mm	in		UL	FM
DN6	1/8"	19	34.5 (500)	-
DN8	1/4"	21	34.5 (500)	-
DN10	3/8"	25	34.5 (500)	-
DN15	1/2"	28	34.5 (500)	34.5 (500)
DN20	3/4"	33	34.5 (500)	34.5 (500)
DN25	1"	38	34.5 (500)	34.5 (500)
DN32	1 1/4"	45	34.5 (500)	34.5 (500)
DN40	1 1/2"	50	34.5 (500)	34.5 (500)
DN50	2"	58	34.5 (500)	34.5 (500)
DN65	2 1/2"	69	34.5 (500)	34.5 (500)
DN80	3"	78	34.5 (500)	34.5 (500)
DN100	4"	96	34.5 (500)	34.5 (500)
DN125	5"	115	34.5 (500)	20.7 (300)
DN150	6"	131	34.5 (500)	20.7 (300)

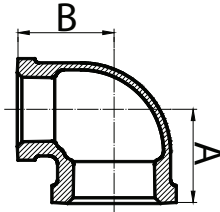
Dimensions

Size		Dimensions		Max Working Pressure bar (psi)	
mm	in	A	B	UL	FM
DN8 x DN6	1/4" x 1/8"	18.5	19	34.5 (500)	-
DN10 x DN6	3/8" x 1/8"	20.5	21.5	34.5 (500)	-
DN10 x DN8	3/8" x 1/4"	23	23	34.5 (500)	-
DN15 x DN8	1/2" x 1/4"	24	24	34.5 (500)	34.5 (500)
DN15 x DN10	1/2" x 3/8"	26	26	34.5 (500)	34.5 (500)
DN20 x DN8	3/4" x 1/4"	26	27	34.5 (500)	34.5 (500)
DN20 x DN10	3/4" x 3/8"	28	28	34.5 (500)	34.5 (500)
DN20 x DN15	3/4" x 1/2"	30	31	34.5 (500)	34.5 (500)
DN25 x DN8	1" x 1/4"	27	31	34.5 (500)	34.5 (500)
DN25 x DN10	1" x 3/8"	30	32	34.5 (500)	34.5 (500)
DN25 x DN15	1" x 1/2"	32	34	34.5 (500)	34.5 (500)
DN25 x DN20	1" x 3/4"	35	36	34.5 (500)	34.5 (500)
DN32 x DN10	1 1/4" x 3/8"	32	36.5	34.5 (500)	34.5 (500)
DN32 x DN15	1 1/4" x 1/2"	32	37	34.5 (500)	34.5 (500)
DN32 x DN20	1 1/4" x 3/4"	36	41	34.5 (500)	34.5 (500)
DN32 x DN25	1 1/4" x 1"	40	42	34.5 (500)	34.5 (500)
DN40 x DN15	1 1/2" x 1/2"	34	41	34.5 (500)	34.5 (500)
DN40 x DN20	1 1/2" x 3/4"	37	42	34.5 (500)	34.5 (500)
DN40 x DN25	1 1/2" x 1"	42	46	34.5 (500)	34.5 (500)
DN40 x DN32	1 1/2" x 1 1/4"	46	48	34.5 (500)	34.5 (500)
DN50 x DN15	2" x 1/2"	35	47	34.5 (500)	34.5 (500)
DN50 x DN20	2" x 3/4"	40	48	34.5 (500)	34.5 (500)
DN50 x DN25	2" x 1"	43	50	34.5 (500)	34.5 (500)
DN50 x DN32	2" x 1 1/4"	47	53	34.5 (500)	34.5 (500)
DN50 x DN40	2" x 1 1/2"	52	56	34.5 (500)	34.5 (500)

Malleable Iron Pipe Fittings

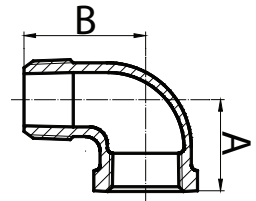
90R

90° Reducing Elbow



92

90° Street Elbow



Dimensions

Size		Dimensions		Max Working Pressure bar (psi)	
mm	in	A	B	UL	FM
DN65 x DN20	2 1/2" x 3/4"	42.5	57	34.5 (500)	34.5 (500)
DN65 x DN25	2 1/2" x 1"	46.5	58.5	34.5 (500)	34.5 (500)
DN65 x DN32	2 1/2" x 1 1/4"	50.5	60	34.5 (500)	34.5 (500)
DN65 x DN40	2 1/2" x 1 1/2"	53.5	61	34.5 (500)	34.5 (500)
DN65 x DN50	2 1/2" x 2"	61	66	34.5 (500)	34.5 (500)
DN80 x DN20	3" x 3/4"	45	65	34.5 (500)	34.5 (500)
DN80 x DN25	3" x 1"	50	68	34.5 (500)	34.5 (500)
DN80 x DN32	3" x 1 1/4"	53.5	68	34.5 (500)	34.5 (500)
DN80 x DN40	3" x 1 1/2"	56	69	34.5 (500)	34.5 (500)
DN80 x DN50	3" x 2"	60.5	71	34.5 (500)	34.5 (500)
DN80 x DN65	3" x 2 1/2"	71	74	34.5 (500)	34.5 (500)
DN100 x DN32	4" x 1 1/4"	60	85	34.5 (500)	34.5 (500)
DN100 x DN40	4" x 1 1/2"	62	85	34.5 (500)	34.5 (500)
DN100 x DN50	4" x 2"	68	86	34.5 (500)	34.5 (500)
DN100 x DN65	4" x 2 1/2"	77	89	34.5 (500)	34.5 (500)
DN100 x DN80	4" x 3"	82	90	34.5 (500)	34.5 (500)
DN150 x DN100	6" x 4"	102	125	34.5 (500)	20.7 (300)

Dimensions

Size		Dimensions		Max Working Pressure bar (psi)	
mm	in	A	B	UL	FM
DN6	1/8"	19	25	34.5 (500)	-
DN8	1/4"	21	28	34.5 (500)	-
DN10	3/8"	25	32	34.5 (500)	-
DN15	1/2"	28	37	34.5 (500)	34.5 (500)
DN20	3/4"	33	43	34.5 (500)	34.5 (500)
DN25	1"	38	52	34.5 (500)	34.5 (500)
DN32	1 1/4"	45	60	34.5 (500)	34.5 (500)
DN40	1 1/2"	50	65	34.5 (500)	34.5 (500)
DN50	2"	58	74	34.5 (500)	34.5 (500)
DN65	2 1/2"	69	88	34.5 (500)	34.5 (500)
DN80	3"	78	98	34.5 (500)	34.5 (500)
DN100	4"	96	118	34.5 (500)	34.5 (500)
DN150	6"	127.5	202	34.5 (500)	20.7 (300)

Malleable Iron Pipe Fittings

96

Union Elbow FxF, Conical Joint Iron to Iron



Dimensions

Size		Dimensions		Max Working Pressure bar (psi)	
mm	in	A	B	UL	FM
DN15	1/2"	28	58	34.5 (500)	34.5 (500)
DN20	3/4"	33	62	34.5 (500)	34.5 (500)
DN25	1"	38	72	34.5 (500)	34.5 (500)
DN32	1 1/4"	45	82	34.5 (500)	34.5 (500)
DN40	1 1/2"	50	90	34.5 (500)	34.5 (500)
DN50	2"	58	100	34.5 (500)	34.5 (500)

120

45° Elbow



Dimensions

Size		Dimensions		Max Working Pressure bar (psi)	
mm	in	A	UL	FM	
DN6	1/8"	16	34.5 (500)	-	
DN8	1/4"	18.5	34.5 (500)	-	
DN10	3/8"	20	34.5 (500)	-	
DN15	1/2"	22	34.5 (500)	34.5 (500)	
DN20	3/4"	25	34.5 (500)	34.5 (500)	
DN25	1"	28	34.5 (500)	34.5 (500)	
DN32	1 1/4"	33	34.5 (500)	34.5 (500)	
DN40	1 1/2"	50	34.5 (500)	34.5 (500)	
DN50	2"	58	34.5 (500)	34.5 (500)	
DN65	2 1/2"	69	34.5 (500)	34.5 (500)	
DN80	3"	78	34.5 (500)	34.5 (500)	
DN100	4"	96	34.5 (500)	34.5 (500)	
DN125	5"	77.5	34.5 (500)	20.7 (300)	
DN150	6"	86	34.5 (500)	20.7 (300)	

98

Union Elbow MxF, Conical Joint Iron to Iron



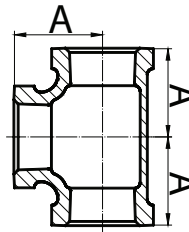
Dimensions

Size		Dimensions		Max Working Pressure bar (psi)	
mm	in	A	B	UL	FM
DN15	1/2"	76	28	34.5 (500)	34.5 (500)
DN20	3/4"	82	33	34.5 (500)	34.5 (500)
DN25	1"	94	38	34.5 (500)	34.5 (500)
DN32	1 1/4"	107	45	34.5 (500)	34.5 (500)
DN40	1 1/2"	115	50	34.5 (500)	34.5 (500)

Malleable Iron Pipe Fittings

130

Tee



Dimensions

Size		Dimensions		Max Working Pressure bar (psi)	
mm	in	A	UL	FM	
DN6	1/8"	19	34.5 (500)	-	
DN8	1/4"	21	34.5 (500)	-	
DN10	3/8"	25	34.5 (500)	-	
DN15	1/2"	28	34.5 (500)	34.5 (500)	
DN20	3/4"	33	34.5 (500)	34.5 (500)	
DN25	1"	38	34.5 (500)	34.5 (500)	
DN32	1 1/4"	45	34.5 (500)	34.5 (500)	
DN40	1 1/2"	50	34.5 (500)	34.5 (500)	
DN50	2"	58	34.5 (500)	34.5 (500)	
DN65	2 1/2"	69	34.5 (500)	34.5 (500)	
DN80	3"	78	34.5 (500)	34.5 (500)	
DN100	4"	96	34.5 (500)	34.5 (500)	
DN125	5"	115	34.5 (500)	20.7 (300)	
DN150	6"	131	34.5 (500)	20.7 (300)	



Malleable Iron Pipe Fittings

130R

Reducing Tee



Dimensions

Size		Dimensions		Max Working Pressure bar (psi)	
mm	in	A	B	UL	FM
DN8 x DN6	1/4" x 1/8"	18.5	19	34.5 (500)	-
DN10 x DN8	3/8" x 1/4"	22	22.5	34.5 (500)	-
DN15 x DN6	1/2" x 1/8"	22	23	34.5 (500)	-
DN15 x DN8	1/2" x 1/4"	24	24	34.5 (500)	34.5 (500)
DN15 x DN10	1/2" x 3/8"	26	26	34.5 (500)	34.5 (500)
DN20 x DN8	3/4" x 1/4"	26	27	34.5 (500)	34.5 (500)
DN20 x DN10	3/4" x 3/8"	28	28	34.5 (500)	34.5 (500)
DN20 x DN15	3/4" x 1/2"	30	31	34.5 (500)	34.5 (500)
DN25 x DN8	1" x 1/4"	28	31	34.5 (500)	34.5 (500)
DN25 x DN10	1" x 3/8"	30	32	34.5 (500)	34.5 (500)
DN25 x DN15	1" x 1/2"	32	34	34.5 (500)	34.5 (500)
DN25 x DN20	1" x 3/4"	35	36	34.5 (500)	34.5 (500)
DN32 x DN10	1 1/4" x 3/8"	32	36	34.5 (500)	34.5 (500)
DN32 x DN15	1 1/4" x 1/2"	34	38	34.5 (500)	34.5 (500)
DN32 x DN20	1 1/4" x 3/4"	36	41	34.5 (500)	34.5 (500)
DN32 x DN25	1 1/4" x 1"	40	42	34.5 (500)	34.5 (500)
DN40 x DN10	1 1/2" x 3/8"	34	39	34.5 (500)	34.5 (500)
DN40 x DN15	1 1/2" x 1/2"	36	42	34.5 (500)	34.5 (500)
DN40 x DN20	1 1/2" x 3/4"	38	44	34.5 (500)	34.5 (500)
DN40 x DN25	1 1/2" x 1"	42	46	34.5 (500)	34.5 (500)
DN40 x DN32	1 1/2" x 1 1/4"	46	48	34.5 (500)	34.5 (500)
DN50 x DN10	2" x 3/8"	36	46	34.5 (500)	34.5 (500)
DN50 x DN15	2" x 1/2"	38	48	34.5 (500)	34.5 (500)
DN50 x DN20	2" x 3/4"	40	50	34.5 (500)	34.5 (500)
DN50 x DN25	2" x 1"	44	52	34.5 (500)	34.5 (500)

130R

Reducing Tee



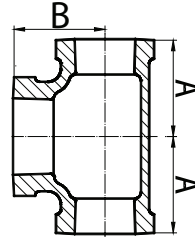
Dimensions

Size		Dimensions		Max Working Pressure bar (psi)	
mm	in	A	B	UL	FM
DN50 x DN32	2" x 1 1/4"	48	54	34.5 (500)	34.5 (500)
DN50 x DN40	2" x 1 1/2"	52	55	34.5 (500)	34.5 (500)
DN65 x DN15	2 1/2" x 1/2"	40	56	34.5 (500)	34.5 (500)
DN65 x DN20	2 1/2" x 3/4"	43	57	34.5 (500)	34.5 (500)
DN65 x DN25	2 1/2" x 1"	47	60	34.5 (500)	34.5 (500)
DN65 x DN32	2 1/2" x 1 1/4"	52	62	34.5 (500)	34.5 (500)
DN65 x DN40	2 1/2" x 1 1/2"	55	63	34.5 (500)	34.5 (500)
DN65 x DN50	2 1/2" x 2"	61	66	34.5 (500)	34.5 (500)
DN80 x DN15	3" x 1/2"	42	64	34.5 (500)	34.5 (500)
DN80 x DN20	3" x 3/4"	45	65	34.5 (500)	34.5 (500)
DN80 x DN25	3" x 1"	51	67	34.5 (500)	34.5 (500)
DN80 x DN32	3" x 1 1/4"	55	70	34.5 (500)	34.5 (500)
DN80 x DN40	3" x 1 1/2"	58	71	34.5 (500)	34.5 (500)
DN80 x DN50	3" x 2"	64	73	34.5 (500)	34.5 (500)
DN80 x DN65	3" x 2 1/2"	72	76	34.5 (500)	34.5 (500)
DN100 x DN15	4" x 1.2"	50	79	34.5 (500)	34.5 (500)
DN100 x DN20	4" x 3/4"	53	79	34.5 (500)	34.5 (500)
DN100 x DN25	4" x 1"	56	81	34.5 (500)	34.5 (500)
DN100 x DN32	4" x 1 1/4"	60	84	34.5 (500)	34.5 (500)
DN100 x DN40	4" x 1 1/2"	61	84	34.5 (500)	34.5 (500)
DN100 x DN50	4" x 2"	70	86	34.5 (500)	34.5 (500)
DN100 x DN65	4" x 2 1/2"	84	92	34.5 (500)	34.5 (500)
DN100 x DN80	4" x 3"	82	90	34.5 (500)	34.5 (500)
DN150 x DN50	6" x 2"	75	115	34.5 (500)	20.7 (300)
DN150 x DN80	6" x 3"	92.5	120.5	34.5 (500)	20.7 (300)
DN150 x DN100	6" x 4"	105	125.5	34.5 (500)	20.7 (300)

Malleable Iron Pipe Fittings

130R

Reducing Tee



Dimensions

Size		Dimensions		Max Working Pressure bar (psi)	
mm	in	A	B	UL	FM
DN15 x DN15 x DN20	1/2" x 1/2" x 3/4"	31	30	34.5 (500)	34.5 (500)
DN15 x DN15 x DN25	1/2" x 1/2" x 1"	34	32	34.5 (500)	34.5 (500)
DN20 x DN20 x DN25	3/4" x 3/4" x 1"	36	35	34.5 (500)	34.5 (500)
DN20 x DN20 x DN32	3/4" x 3/4" x 1 1/4"	41	36	34.5 (500)	34.5 (500)
DN25 x DN25 x DN32	1" x 1" x 1 1/4"	42	40	34.5 (500)	34.5 (500)
DN25 x DN25 x DN40	1" x 1" x 1 1/2"	46	42	34.5 (500)	34.5 (500)
DN25 x DN25 x DN50	1" x 1" x 2"	51	48.5	34.5 (500)	34.5 (500)
DN25 x DN25 x DN65	1" x 1" x 2 1/2"	60	48	34.5 (500)	34.5 (500)
DN32 x DN32 x DN40	1 1/4" x 1 1/4" x 1 1/2"	48	46	34.5 (500)	34.5 (500)
DN32 x DN32 x DN50	1 1/4" x 1 1/4" x 2"	54	48	34.5 (500)	34.5 (500)
DN40 x DN40 x DN50	1 1/2" x 1 1/2" x 2"	55	52	34.5 (500)	34.5 (500)
DN40 x DN40 x DN65	1 1/2" x 1 1/2" x 2 1/2"	65	55	34.5 (500)	34.5 (500)
DN50 x DN50 x DN65	2" x 2" x 2 1/2"	64	59	34.5 (500)	34.5 (500)
DN65 x DN65 x DN80	2 1/2" x 2 1/2" x 3"	75	72	34.5 (500)	34.5 (500)
DN65 x DN65 x DN100	2 1/2" x 2 1/2" x 4"	90	78	34.5 (500)	34.5 (500)

Malleable Iron Pipe Fittings

130R

Reducing Tee



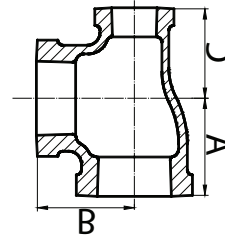
Dimensions

Size		Dimensions			Max Working Pressure bar (psi)	
mm	in	A	B	C	UL	FM
DN20 x DN15 x DN15	3/4" x 1/2" x 1/2"	30	31	28	34.5 (500)	34.5 (500)
DN25 x DN15 x DN15	1" x 1/2" x 1/2"	32	34	28	34.5 (500)	34.5 (500)
DN25 x DN20 x DN20	1" x 3/4" x 3/4"	35	36	33	34.5 (500)	34.5 (500)
DN32 x DN15 x DN15	1 1/4" x 1/2" x 1/2"	34	38	27	34.5 (500)	34.5 (500)
DN32 x DN20 x DN20	1 1/4" x 3/4" x 3/4"	36	41	33	34.5 (500)	34.5 (500)
DN32 x DN25 x DN25	1 1/4" x 1" x 1"	40	42	38	34.5 (500)	34.5 (500)
DN40 x DN20 x DN20	1 1/2" x 3/4" x 3/4"	38	43	32	34.5 (500)	34.5 (500)
DN40 x DN25 x DN25	1 1/2" x 1" x 1"	42	46	38	34.5 (500)	34.5 (500)
DN40 x DN32 x DN32	1 1/2" x 1 1/4" x 1 1/4"	46	48	45	34.5 (500)	34.5 (500)
DN50 x DN25 x DN25	2" x 1" x 1"	44	51	38	34.5 (500)	34.5 (500)
DN50 x DN32 x DN32	2" x 1 1/4" x 1 1/4"	48	54	45	34.5 (500)	34.5 (500)
DN50 x DN40 x DN40	2" x 1 1/2" x 1 1/2"	52	55	50	34.5 (500)	34.5 (500)
DN65 x DN50 x DN50	2 1/2" x 2" x 2"	60.5	66	57	34.5 (500)	34.5 (500)
DN80 x DN50 x DN50	3" x 2" x 2"	64	73	57	34.5 (500)	34.5 (500)

Malleable Iron Pipe Fittings

130R

Reducing Tee



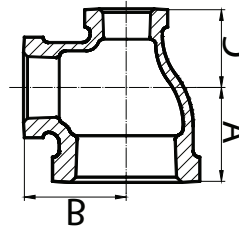
Dimensions

Size		Dimensions			Max Working Pressure bar (psi)	
mm	in	A	B	C	UL	FM
DN20 x DN15 x DN20	3/4" x 1/2" x 3/4"	33	33	31	34.5 (500)	34.5 (500)
DN25 x DN8 x DN25	1" x 1/4" x 1"	38	38	30	34.5 (500)	34.5 (500)
DN25 x DN15 x DN 25	1" x 1/2" x 1"	38	38	34	34.5 (500)	34.5 (500)
DN25 x DN20 x DN 25	1" x 3/4" x 1"	38	38	36	34.5 (500)	34.5 (500)
DN32 x DN15 x DN32	1 1/4" x 1/2" x 1 1/4"	45	45	38	34.5 (500)	34.5 (500)
DN32 x DN20 x DN32	1 1/4" x 3/4" x 1 1/4"	45	45	41	34.5 (500)	34.5 (500)
DN32 x DN25 x DN32	1 1/4" x 1" x 1 1/4"	45	45	42	34.5 (500)	34.5 (500)
DN40 x DN15 x DN40	1 1/2" x 1/2" x 1 1/2"	50	50	42	34.5 (500)	34.5 (500)
DN40 x DN20 x DN40	1 1/2" x 3/4" x 1 1/2"	50	50	44	34.5 (500)	34.5 (500)
DN40 x DN25 x DN40	1 1/2" x 1" x 1 1/2"	50	50	46	34.5 (500)	34.5 (500)
DN40 x DN32 x DN40	1 1/2" x 1 1/4" x 1 1/2"	50	50	48	34.5 (500)	34.5 (500)
DN50 x DN15 x DN50	2" x 1/2" x 2"	57	57	47.5	34.5 (500)	34.5 (500)
DN50 x DN20 x DN50	2" x 3/4" x 2"	58	58	50	34.5 (500)	34.5 (500)
DN50 x DN25 x DN50	2" x 1" x 2"	58	58	52	34.5 (500)	34.5 (500)
DN50 x DN32 x DN50	2" x 1 1/4" x 2"	58	58	54	34.5 (500)	34.5 (500)
DN50 x DN40 x DN50	2" x 1 1/2" x 2"	58	58	55	34.5 (500)	34.5 (500)
DN65 x DN40 x DN65	2 1/2" x 1 1/2" x 2 1/2"	68.5	68.5	63.5	34.5 (500)	34.5 (500)
DN65 x DN50 x DN65	2 1/2" x 2" x 2 1/2"	67	67	65	34.5 (500)	34.5 (500)

Malleable Iron Pipe Fittings

130R

Reducing Tee



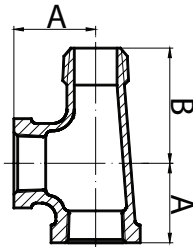
Dimensions

Size		Dimensions			Max Working Pressure bar (psi)	
mm	in	A	B	C	UL	FM
DN20 x DN15 x DN25	3/4" x 1/2" x 1"	38	34	33	34.5 (500)	34.5 (500)
DN25 x DN15 x DN20	1" x 1/2" x 3/4"	35	36	31	34.5 (500)	34.5 (500)
DN32 x DN15 x DN20	1 1/4" x 1/2" x 3/4"	35	38	29	34.5 (500)	34.5 (500)
DN32 x DN15 x DN25	1 1/4" x 1/2" x 1"	39	41.5	34	34.5 (500)	34.5 (500)
DN32 x DN20 x DN15	1 1/4" x 3/4" x 1/2"	40	42.5	37	34.5 (500)	34.5 (500)
DN32 x DN20 x DN25	1 1/4" x 3/4" x 1"	40	42	36	34.5 (500)	34.5 (500)
DN32 x DN25 x DN15	1 1/4" x 1" x 1/2"	34	38	32	34.5 (500)	34.5 (500)
DN32 x DN25 x DN20	1 1/4" x 1" x 3/4"	36	41	35	34.5 (500)	34.5 (500)
DN40 x DN15 x DN25	1 1/2" x 1/2" x 1"	44	46	34	-	-
DN40 x DN20 x DN25	1 1/2" x 3/4" x 1"	44	46	35	34.5 (500)	34.5 (500)
DN40 x DN20 x DN32	1 1/2" x 3/4" x 1 1/4"	46	48	41	34.5 (500)	34.5 (500)
DN40 x DN25 x DN15	1 1/2" x 1" x 1/2"	37	41	32	34.5 (500)	34.5 (500)
DN40 x DN25 x DN32	1 1/2" x 1" x 1 1/4"	45	47	41.5	34.5 (500)	34.5 (500)
DN40 x DN32 x DN15	1 1/2" x 1 1/4" x 1/2"	36	42	34	34.5 (500)	34.5 (500)
DN40 x DN32 x DN20	1 1/2" x 1 1/4" x 3/4"	38	44	36	34.5 (500)	34.5 (500)
DN40 x DN32 x DN25	1 1/2" x 1 1/4" x 1"	42	46	40	34.5 (500)	-
DN40 x DN32 x DN50	1 1/2" x 1 1/4" x 2"	55	51.5	53.5	34.5 (500)	34.5 (500)
DN50 x DN25 x DN40	2" x 1" x 1 1/2"	51	55	45.5	34.5 (500)	34.5 (500)
DN50 x DN32 x DN25	2" x 1 1/4" x 1"	40	51	44	34.5 (500)	34.5 (500)
DN50 x DN32 x DN40	2" x 1 1/4" x 1 1/2"	52	55	48	34.5 (500)	34.5 (500)
DN50 x DN40 x DN15	2" x 1 1/2" x 1/2"	38	48	36	34.5 (500)	-
DN50 x DN40 x DN20	2" x 1 1/2" x 3/4"	40	50	39	34.5 (500)	34.5 (500)
DN50 x DN40 x DN25	2" x 1 1/2" x 1"	44	52	42	34.5 (500)	34.5 (500)
DN50 x DN40 x DN32	2" x 1 1/2" x 1 1/4"	48	54	46	34.5 (500)	34.5 (500)
DN65 x DN50 x DN15	2 1/2" x 2" x 1/2"	57	64	52	34.5 (500)	34.5 (500)
DN65 x DN50 x DN25	2 1/2" x 2" x 1"	53	60	53	34.5 (500)	34.5 (500)
DN65 x DN50 x DN32	2 1/2" x 2" x 1 1/4"	57	64	52	34.5 (500)	34.5 (500)
DN80 x DN65 x DN50	3" x 2 1/2" x 2"	67	74.5	64	-	-
DN100 x DN80 x DN50	4" x 3" x 2"	67	83.5	60	-	-

Malleable Iron Pipe Fittings

134

Service Tee

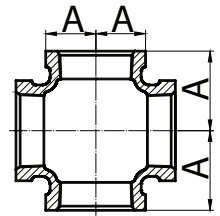


Dimensions

Size		Dimensions		Max Working Pressure bar (psi)	
mm	in	A	B	UL	FM
DN15	1/2"	28.5	41.5	34.5 (500)	34.5 (500)
DN20	3/4"	33.5	48	34.5 (500)	34.5 (500)
DN25	1"	38	54.5	34.5 (500)	34.5 (500)
DN32	1 1/4"	44.5	62	34.5 (500)	34.5 (500)
DN40	1 1/2"	49.5	68.5	34.5 (500)	34.5 (500)
DN50	2"	57	83	34.5 (500)	34.5 (500)

180

Cross

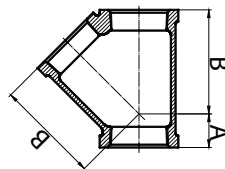


Dimensions

Size		Dimensions	Max Working Pressure bar (psi)	
mm	in	A	UL	FM
DN6	1/8"	19	34.5 (500)	-
DN8	1/4"	21	34.5 (500)	-
DN10	3/8"	25	34.5 (500)	-
DN15	1/2"	28	34.5 (500)	34.5 (500)
DN20	3/4"	33	34.5 (500)	34.5 (500)
DN25	1"	38	34.5 (500)	34.5 (500)
DN32	1 1/4"	45	34.5 (500)	34.5 (500)
DN40	1 1/2"	50	34.5 (500)	34.5 (500)
DN50	2"	58	34.5 (500)	34.5 (500)
DN65	2 1/2"	69	34.5 (500)	34.5 (500)
DN80	3"	78	34.5 (500)	34.5 (500)
DN100	4"	96	34.5 (500)	34.5 (500)

165

45° Lethal Y Branch



Dimensions

Size		Dimensions		Max Working Pressure bar (psi)	
mm	in	A	B	UL	FM
DN15	1/2"	15.5	43.5	34.5 (500)	34.5 (500)
DN20	3/4"	18.3	52	34.5 (500)	34.5 (500)
DN25	1"	21.6	67.7	34.5 (500)	34.5 (500)
DN32	1 1/4"	26	74.2	34.5 (500)	34.5 (500)
DN40	1 1/2"	27.9	83.3	34.5 (500)	34.5 (500)
DN50	2"	31.5	99.8	34.5 (500)	34.5 (500)
DN65	2 1/2"	38.6	120	34.5 (500)	34.5 (500)
DN80	3"	43.4	141	34.5 (500)	34.5 (500)
DN100	4"	51	177	34.5 (500)	34.5 (500)

Malleable Iron Pipe Fittings

180R

Reducing Cross



220

Socket



Dimensions

Size		Dimensions		Max Working Pressure bar (psi)	
mm	in	A	B	UL	FM
DN20 x DN15	3/4" x 1/2"	30	31	34.5 (500)	34.5 (500)
DN25 x DN15	1" x 1/2"	32	34	34.5 (500)	34.5 (500)
DN25 x DN20	1" x 3/4"	35	36	34.5 (500)	34.5 (500)
DN32 x DN15	1 1/4" x 1/2"	34	38	34.5 (500)	34.5 (500)
DN32 x DN20	1 1/4" x 3/4"	36	41	34.5 (500)	34.5 (500)
DN32 x DN25	1 1/4" x 1"	40	42	34.5 (500)	34.5 (500)
DN40 x DN15	1 1/2" x 1/2"	36	42	34.5 (500)	34.5 (500)
DN40 x DN20	1 1/2" x 3/4"	38	44	34.5 (500)	34.5 (500)
DN40 x DN25	1 1/2" x 1"	42	46	34.5 (500)	34.5 (500)
DN40 x DN32	1 1/2" x 1 1/4"	46	48	34.5 (500)	34.5 (500)
DN50 x DN20	2" x 3/4"	40	50	34.5 (500)	34.5 (500)
DN50 x DN25	2" x 1"	44	52	34.5 (500)	34.5 (500)
DN50 x DN32	2" x 1 1/4"	48	54	34.5 (500)	34.5 (500)
DN50 x DN40	2" x 1 1/2"	52	55	34.5 (500)	34.5 (500)
DN65 x DN20	2 1/2" x 3/4"	43	57	-	34.5 (500)
DN65 x DN25	2 1/2" x 1"	47	60	34.5 (500)	34.5 (500)
DN65 x DN32	2 1/2" x 1 1/4"	52	62	34.5 (500)	34.5 (500)
DN65 x DN40	2 1/2" x 1 1/2"	55	63	34.5 (500)	34.5 (500)
DN65 x DN50	2 1/2" x 2"	61	66	34.5 (500)	34.5 (500)
DN80 x DN20	3" x 3/4"	45	65	34.5 (500)	34.5 (500)
DN80 x DN25	3" x 1"	51	67	34.5 (500)	34.5 (500)
DN80 x DN32	3" x 1 1/4"	55	70	34.5 (500)	34.5 (500)
DN80 x DN40	3" x 1 1/2"	58	71	34.5 (500)	34.5 (500)
DN80 x DN50	3" x 2"	64	73	34.5 (500)	34.5 (500)
DN80 x DN65	3" x 2 1/2"	72	76	34.5 (500)	-
DN100 x DN25	4" x 1"	56	81	34.5 (500)	34.5 (500)
DN100 x DN32	4" x 1 1/4"	60	84	34.5 (500)	34.5 (500)
DN100 x DN40	4" x 1 1/2"	61	84	34.5 (500)	34.5 (500)
DN100 x DN50	4" x 2"	70	86	34.5 (500)	34.5 (500)
DN100 x DN65	4" x 2 1/2"	84	92	34.5 (500)	34.5 (500)
DN100 x DN80	4" x 3"	82	90	34.5 (500)	34.5 (500)

Dimensions

Size		Dimensions	Max Working Pressure bar (psi)	
mm	in	A	UL	FM
DN6	1/8"	25	34.5 (500)	-
DN8	1/4"	27	34.5 (500)	-
DN10	3/8"	30	34.5 (500)	-
DN15	1/2"	36	34.5 (500)	34.5 (500)
DN20	3/4"	39	34.5 (500)	34.5 (500)
DN25	1"	45	34.5 (500)	34.5 (500)
DN32	1 1/4"	50	34.5 (500)	34.5 (500)
DN40	1 1/2"	55	34.5 (500)	34.5 (500)
DN50	2"	65	34.5 (500)	34.5 (500)
DN65	2 1/2"	74	34.5 (500)	34.5 (500)
DN80	3"	80	34.5 (500)	34.5 (500)
DN100	4"	94	34.5 (500)	34.5 (500)
DN125	5"	95	34.5 (500)	20.7 (300)
DN150	6"	105	34.5 (500)	20.7 (300)

Malleable Iron Pipe Fittings

240

Reducing Socket



Dimensions

Size		Dimensions	Max Working Pressure bar (psi)	
mm	in	A	UL	FM
DN8 x DN6	1/4" x 1/8"	27	34.5 (500)	-
DN10 x DN6	3/8" x 1/8"	30	34.5 (500)	-
DN10 x DN8	3/8" x 1/4"	30	34.5 (500)	-
DN15 x DN6	1/2" x 1/8"	36	34.5 (500)	-
DN15 x DN8	1/2" x 1/4"	36	34.5 (500)	34.5 (500)
DN15 x DN10	1/2" x 3/8"	36	34.5 (500)	34.5 (500)
DN20 x DN6	3/4" x 1/8"	39	34.5 (500)	-
DN20 x DN8	3/4" x 1/4"	39	34.5 (500)	34.5 (500)
DN20 x DN10	3/4" x 3/8"	39	34.5 (500)	34.5 (500)
DN20 x DN15	3/4" x 1/2"	39	34.5 (500)	34.5 (500)
DN25 x DN8	1" x 1/4"	45	34.5 (500)	34.5 (500)
DN25 x DN10	1" x 3/8"	45	34.5 (500)	34.5 (500)
DN25 x DN15	1" x 1/2"	45	34.5 (500)	34.5 (500)
DN25 x DN20	1" x 3/4"	45	34.5 (500)	34.5 (500)
DN32 x DN8	1 1/4" x 1/4"	50	34.5 (500)	34.5 (500)
DN32 x DN10	1 1/4" x 3/8"	50	34.5 (500)	34.5 (500)
DN32 x DN15	1 1/4" x 1/2"	50	34.5 (500)	34.5 (500)
DN32 x DN20	1 1/4" x 3/4"	50	34.5 (500)	34.5 (500)
DN32 x DN25	1 1/4" x 1"	50	34.5 (500)	34.5 (500)
DN40 x DN8	1 1/2" x 1/4"	55	34.5 (500)	34.5 (500)
DN40 x DN10	1 1/2" x 3/8"	55	34.5 (500)	34.5 (500)
DN40 x DN15	1 1/2" x 1/2"	55	34.5 (500)	34.5 (500)
DN40 x DN20	1 1/2" x 3/4"	55	34.5 (500)	34.5 (500)
DN40 x DN25	1 1/2" x 1"	55	34.5 (500)	34.5 (500)
DN40 x DN32	1 1/2" x 1 1/4"	55	34.5 (500)	34.5 (500)
DN50 x DN15	2" x 1/2"	65	34.5 (500)	34.5 (500)

240

Reducing Socket



Dimensions

Size		Dimensions	Max Working Pressure bar (psi)	
mm	in	A	UL	FM
DN50 x DN20	2" x 3/4"	65	34.5 (500)	34.5 (500)
DN50 x DN25	2" x 1"	65	34.5 (500)	34.5 (500)
DN50 x DN32	2" x 1 1/4"	65	34.5 (500)	34.5 (500)
DN50 x DN40	2" x 1 1/2"	74	34.5 (500)	34.5 (500)
DN65 x DN15	2 1/2" x 1/2"	74	34.5 (500)	34.5 (500)
DN65 x DN20	2 1/2" x 3/4"	74	34.5 (500)	34.5 (500)
DN65 x DN25	2 1/2" x 1"	74	34.5 (500)	34.5 (500)
DN65 x DN32	2 1/2" x 1 1/4"	74	34.5 (500)	34.5 (500)
DN65 x DN40	2 1/2" x 1 1/2"	74	34.5 (500)	34.5 (500)
DN65 x DN50	2 1/2" x 2"	74	34.5 (500)	34.5 (500)
DN80 x DN15	3" x 1/2"	80	34.5 (500)	34.5 (500)
DN80 x DN20	3" x 3/4"	80	34.5 (500)	34.5 (500)
DN80 x DN25	3" x 1"	80	34.5 (500)	34.5 (500)
DN80 x DN32	3" x 1 1/4"	80	34.5 (500)	34.5 (500)
DN80 x DN40	3" x 1 1/2"	80	34.5 (500)	34.5 (500)
DN80 x DN50	3" x 2"	80	34.5 (500)	34.5 (500)
DN80 x DN65	3" x 2 1/2"	80	34.5 (500)	34.5 (500)
DN100 x DN25	4" x 1"	94	-	-
DN100 x DN32	4" x 1 1/4"	94	-	-
DN100 x DN40	4" x 1 1/2"	94	-	-
DN100 x DN50	4" x 2"	94	-	-
DN100 x DN65	4" x 2 1/2"	94	-	-
DN100 x DN80	4" x 3"	94	-	-
DN125 x DN100	5" x 4"	122	-	-
DN150 x DN50	6" x 2"	105	-	-
DN150 x DN80	6" x 3"	105	-	-
DN150 x DN100	6" x 4"	105	-	-

Malleable Iron Pipe Fittings

241

Bushing



241

Bushing



Dimensions

Size		Dimensions	Max Working Pressure bar (psi)	
mm	in		UL	FM
DN8 x DN6	1/4" x 1/8"	20	34.5 (500)	-
DN10 x DN6	3/8" x 1/8"	20	34.5 (500)	-
DN10 x DN8	3/8" x 1/4"	20	34.5 (500)	-
DN15 x DN6	1/2" x 1/8"	24	34.5 (500)	-
DN15 x DN8	1/2" x 1/4"	24	34.5 (500)	34.5 (500)
DN15 x DN10	1/2" x 3/8"	24	34.5 (500)	34.5 (500)
DN20 x DN6	3/4" x 1/8"	26	34.5 (500)	-
DN20 x DN8	3/4" x 1/4"	26	34.5 (500)	34.5 (500)
DN20 x DN10	3/4" x 3/8"	26	34.5 (500)	34.5 (500)
DN20 x DN15	3/4" x 1/2"	26	34.5 (500)	34.5 (500)
DN25 x DN8	1" x 1/4"	29	34.5 (500)	34.5 (500)
DN25 x DN10	1" x 3/8"	29	34.5 (500)	34.5 (500)
DN25 x DN15	1" x 1/2"	29	34.5 (500)	34.5 (500)
DN25 x DN20	1" x 3/4"	29	34.5 (500)	34.5 (500)
DN32 x DN10	1 1/4" x 3/8"	31	34.5 (500)	34.5 (500)
DN32 x DN15	1 1/4" x 1/2"	31	34.5 (500)	34.5 (500)
DN32 x DN20	1 1/4" x 3/4"	31	34.5 (500)	34.5 (500)
DN32 x DN25	1 1/4" x 1"	31	34.5 (500)	34.5 (500)
DN40 x DN8	1 1/2" x 1/4"	31	34.5 (500)	34.5 (500)
DN40 x DN10	1 1/2" x 3/8"	31	34.5 (500)	34.5 (500)
DN40 x DN15	1 1/2" x 1/2"	31	34.5 (500)	34.5 (500)
DN40 x DN20	1 1/2" x 3/4"	31	34.5 (500)	34.5 (500)
DN40 x DN25	1 1/2" x 1"	31	34.5 (500)	34.5 (500)
DN40 x DN32	1 1/2" x 1 1/4"	31	34.5 (500)	34.5 (500)

Dimensions

Size		Dimensions	Max Working Pressure bar (psi)	
mm	in		UL	FM
DN50 x DN25	2" x 1"	35	34.5 (500)	34.5 (500)
DN50 x DN32	2" x 1 1/4"	35	34.5 (500)	34.5 (500)
DN50 x DN40	2" x 1 1/2"	35	34.5 (500)	34.5 (500)
DN65 x DN15	2 1/2" x 1/2"	40	34.5 (500)	34.5 (500)
DN65 x DN20	2 1/2" x 3/4"	40	34.5 (500)	34.5 (500)
DN65 x DN40	2 1/2" x 1 1/2"	40	34.5 (500)	34.5 (500)
DN65 x DN50	2 1/2" x 2"	40	34.5 (500)	34.5 (500)
DN80 x DN50	3" x 2"	44	34.5 (500)	34.5 (500)
DN80 x DN65	3" x 2 1/2"	44	34.5 (500)	34.5 (500)
DN100 x DN20	4" x 3/4"	51	34.5 (500)	34.5 (500)
DN100 x DN25	4" x 1"	51	34.5 (500)	34.5 (500)
DN100 x DN32	4" x 1 1/4"	51	34.5 (500)	34.5 (500)
DN100 x DN40	4" x 1 1/2"	51	34.5 (500)	34.5 (500)
DN100 x DN80	4" x 3"	51	34.5 (500)	34.5 (500)
DN125 x DN100	5" x 4"	47	34.5 (500)	20.7 (300)
DN150 x DN65	6" x 2 1/2"	69	34.5 (500)	20.7 (300)
DN150 x DN125	6" x 5"	69	34.5 (500)	20.7 (300)

Malleable Iron Pipe Fittings

270

Parallel Thread Socket



280

Hexagon Nipple



Dimensions

Size		Dimensions A	Max Working Pressure bar (psi)	
mm	in		UL	FM
DN6	1/8"	25	34.5 (500)	-
DN8	1/4"	27	34.5 (500)	-
DN10	3/8"	30	34.5 (500)	-
DN15	1/2"	36	34.5 (500)	34.5 (500)
DN20	3/4"	39	34.5 (500)	34.5 (500)
DN25	1"	45	34.5 (500)	34.5 (500)
DN32	1 1/4"	50	34.5 (500)	34.5 (500)
DN40	1 1/2"	55	34.5 (500)	34.5 (500)
DN50	2"	65	34.5 (500)	34.5 (500)
DN65	2 1/2"	74	34.5 (500)	34.5 (500)
DN80	3"	80	34.5 (500)	34.5 (500)
DN100	4"	94	34.5 (500)	34.5 (500)
DN150	6"	120	34.5 (500)	20.7 (300)

Dimensions

Size		Dimensions A	Max Working Pressure bar (psi)	
mm	in		UL	FM
DN6	1/8"	29	34.5 (500)	-
DN8	1/4"	36	34.5 (500)	-
DN10	3/8"	38	34.5 (500)	-
DN15	1/2"	44	34.5 (500)	34.5 (500)
DN20	3/4"	47	34.5 (500)	34.5 (500)
DN25	1"	53	34.5 (500)	34.5 (500)
DN32	1 1/4"	57	34.5 (500)	34.5 (500)
DN40	1 1/2"	59	34.5 (500)	34.5 (500)
DN50	2"	68	34.5 (500)	34.5 (500)
DN65	2 1/2"	75	34.5 (500)	34.5 (500)
DN80	3"	83	34.5 (500)	34.5 (500)
DN100	4"	95	34.5 (500)	34.5 (500)
DN125	5"	103	34.5 (500)	20.7 (300)
DN150	6"	110	34.5 (500)	20.7 (300)

Malleable Iron Pipe Fittings

291

Plain Plug



300

Cap



Dimensions

Size		Dimensions A	Max Working Pressure bar (psi)	
mm	in		UL	FM
DN6	1/8"	11	34.5 (500)	-
DN8	1/4"	14	34.5 (500)	-
DN10	3/8"	15	34.5 (500)	-
DN15	1/2"	18	34.5 (500)	34.5 (500)
DN20	3/4"	20	34.5 (500)	34.5 (500)
DN25	1"	23	34.5 (500)	34.5 (500)
DN32	1 1/4"	29	34.5 (500)	34.5 (500)
DN40	1 1/2"	30	34.5 (500)	34.5 (500)
DN50	2"	36	34.5 (500)	34.5 (500)
DN65	2 1/2"	39	34.5 (500)	34.5 (500)
DN80	3"	44	34.5 (500)	34.5 (500)
DN100	4"	58	34.5 (500)	34.5 (500)
DN150	6"	71.5	34.5 (500)	20.7 (300)

Dimensions

Size		Dimensions A	Max Working Pressure bar (psi)	
mm	in		UL	FM
DN6	1/8"	13	34.5 (500)	-
DN8	1/4"	15	34.5 (500)	-
DN10	3/8"	17	34.5 (500)	-
DN15	1/2"	19	34.5 (500)	34.5 (500)
DN20	3/4"	22	34.5 (500)	34.5 (500)
DN25	1"	24	34.5 (500)	34.5 (500)
DN32	1 1/4"	27	34.5 (500)	34.5 (500)
DN40	1 1/2"	27	34.5 (500)	34.5 (500)
DN50	2"	32	34.5 (500)	34.5 (500)
DN65	2 1/2"	35	34.5 (500)	34.5 (500)
DN80	3"	38	34.5 (500)	34.5 (500)
DN100	4"	45	34.5 (500)	34.5 (500)
DN125	5"	54	34.5 (500)	20.7 (300)
DN150	6"	61	34.5 (500)	20.7 (300)

Malleable Iron Pipe Fittings

310

Lock Nut



Dimensions

Size		Dimensions	Max Working Pressure bar (psi)	
mm	in	A	UL	FM
DN8	1/4"	6	34.5 (500)	-
DN10	3/8"	7	34.5 (500)	-
DN15	1/2"	8	34.5 (500)	34.5 (500)
DN20	3/4"	9	34.5 (500)	34.5 (500)
DN25	1"	10	34.5 (500)	34.5 (500)
DN32	1 1/4"	11	34.5 (500)	34.5 (500)
DN40	1 1/2"	12	34.5 (500)	34.5 (500)
DN50	2"	13	34.5 (500)	34.5 (500)
DN65	2 1/2"	16	34.5 (500)	34.5 (500)
DN80	3"	19	34.5 (500)	34.5 (500)
DN100	4"	23	34.5 (500)	34.5 (500)

321-4

Flange BS 4504



Dimensions

Size		Dimensions	Max Working Pressure bar (psi)	
mm	in	A	UL	FM
DN32	1 1/4"	23	34.5 (500)	34.5 (500)
DN40	1 1/2"	23	34.5 (500)	34.5 (500)
DN50	2"	28	34.5 (500)	34.5 (500)
DN65	2 1/2"	35	34.5 (500)	34.5 (500)
DN80	3"	38	34.5 (500)	34.5 (500)
DN100	4"	38	34.5 (500)	34.5 (500)
DN150	6"	46	34.5 (500)	20.7 (300)

321-6

Flange 1600/4



Dimensions

Size		Dimensions	Max Working Pressure bar (psi)	
mm	in	B	UL	FM
DN32	1 1/4"	20	34.5 (500)	34.5 (500)
DN40	1 1/2"	20	34.5 (500)	34.5 (500)
DN50	2"	22	34.5 (500)	34.5 (500)
DN65	2 1/2"	26	34.5 (500)	34.5 (500)
DN80	3"	28	34.5 (500)	34.5 (500)
DN100	4"	34	34.5 (500)	34.5 (500)
DN150	6"	40	34.5 (500)	20.7 (300)

Malleable Iron Pipe Fittings

321-H

Flange



321P

Flange DRP D



Dimensions

Size		Dimensions A	Max Working Pressure bar (psi)	
mm	in		UL	FM
DN15	1/2"	15	34.5 (500)	34.5 (500)
DN20	3/4"	16	34.5 (500)	34.5 (500)
DN25	1"	19	34.5 (500)	34.5 (500)
DN32	1 1/4"	21	34.5 (500)	34.5 (500)
DN40	1 1/2"	21	34.5 (500)	34.5 (500)
DN50	2"	26	34.5 (500)	34.5 (500)
DN65	2 1/2"	30	34.5 (500)	34.5 (500)
DN80	3"	33	34.5 (500)	34.5 (500)
DN100	4"	39	34.5 (500)	34.5 (500)

Dimensions

Size		Dimensions A	Max Working Pressure bar (psi)	
mm	in		UL	FM
DN15	1/2"	15	34.5 (500)	34.5 (500)
DN20	3/4"	16	34.5 (500)	34.5 (500)
DN25	1"	19	34.5 (500)	34.5 (500)
DN32	1 1/4"	21	34.5 (500)	34.5 (500)
DN40	1 1/2"	21	34.5 (500)	34.5 (500)
DN50	2"	26	34.5 (500)	34.5 (500)
DN65	2 1/2"	30	34.5 (500)	34.5 (500)
DN80	3"	33	34.5 (500)	34.5 (500)
DN100	4"	39	34.5 (500)	34.5 (500)
DN125	5"	40	34.5 (500)	20.7 (300)
DN150	6"	40	34.5 (500)	20.7 (300)

Malleable Iron Pipe Fittings

321PW

Flange U/D



321TD

Flange BS Table D



Dimensions

Size		Dimensions	Max Working Pressure bar (psi)	
mm	in		UL	FM
DN15	1/2"	15	34.5 (500)	34.5 (500)
DN20	3/4"	16	34.5 (500)	34.5 (500)
DN25	1"	19	34.5 (500)	34.5 (500)
DN32	1 1/4"	21	34.5 (500)	34.5 (500)
DN40	1 1/2"	21	34.5 (500)	34.5 (500)
DN50	2"	26	34.5 (500)	34.5 (500)
DN65	2 1/2"	30	34.5 (500)	34.5 (500)
DN80	3"	33	34.5 (500)	34.5 (500)
DN100	4"	39	34.5 (500)	34.5 (500)
DN125	5"	40	34.5 (500)	20.7 (300)
DN150	6"	40	34.5 (500)	20.7 (300)

Dimensions

Size		Dimensions	Max Working Pressure bar (psi)	
mm	in		UL	FM
DN25	1"	16	34.5 (500)	34.5 (500)
DN32	1 1/4"	17.4	34.5 (500)	34.5 (500)
DN40	1 1/2"	23	34.5 (500)	34.5 (500)
DN50	2"	25	34.5 (500)	34.5 (500)
DN65	2 1/2"	25	34.5 (500)	34.5 (500)
DN80	3"	26.8	34.5 (500)	34.5 (500)
DN100	4"	31.5	34.5 (500)	34.5 (500)
DN150	6"	35	34.5 (500)	20.7 (300)

Malleable Iron Pipe Fittings

330

Flat Seat Union without gasket



Dimensions

Size		Dimensions	Max Working Pressure bar (psi)	
mm	in	A	UL	FM
DN6	1/8"	38	-	-
DN8	1/4"	42	-	-
DN10	3/8"	45	-	-
DN15	1/2"	48	-	34.5 (500)
DN20	3/4"	52	-	34.5 (500)
DN25	1"	58	-	34.5 (500)
DN32	1 1/4"	65	-	34.5 (500)
DN40	1 1/2"	70	-	34.5 (500)
DN50	2"	78	-	34.5 (500)
DN65	2 1/2"	85	-	34.5 (500)
DN80	3"	95	-	34.5 (500)
DN100	4"	100	-	34.5 (500)
DN150	6"	144	-	-

340

Conical Union Fitting Iron to Iron



Dimensions

Size		Dimensions	Max Working Pressure bar (psi)	
mm	in	A	UL	FM
DN6	1/8"	38	-	-
DN8	1/4"	42	-	-
DN10	3/8"	45	-	-
DN15	1/2"	48	-	34.5 (500)
DN20	3/4"	52	-	34.5 (500)
DN25	1"	58	-	34.5 (500)
DN32	1 1/4"	65	-	34.5 (500)
DN40	1 1/2"	70	-	34.5 (500)
DN50	2"	78	-	34.5 (500)
DN65	2 1/2"	85	-	34.5 (500)
DN80	3"	95	-	34.5 (500)
DN100	4"	100	-	34.5 (500)

Malleable Iron Pipe Fittings

341

Conical Union Fitting MxF Iron to Iron



342

Conical Union Fitting Brass to Iron



Dimensions

Size		Dimensions	Max Working Pressure bar (psi)	
mm	in	A	UL	FM
DN8	1/4"	55	-	-
DN10	3/8"	55	-	-
DN15	1/2"	66	-	34.5 (500)
DN20	3/4"	72	-	34.5 (500)
DN25	1"	80	-	34.5 (500)
DN32	1 1/4"	90	-	34.5 (500)
DN40	1 1/2"	95	-	34.5 (500)
DN50	2"	106	-	34.5 (500)
DN65	2 1/2"	118	-	34.5 (500)
DN80	3"	130	-	34.5 (500)
DN100	4"	133	-	34.5 (500)

Dimensions

Size		Dimensions	Max Working Pressure bar (psi)	
mm	in	A	UL	FM
DN6	1/8"	32	-	-
DN8	1/4"	36.5	-	-
DN10	3/8"	41	-	-
DN15	1/2"	43.5	-	34.5 (500)
DN20	3/4"	49.5	-	34.5 (500)
DN25	1"	52.5	-	34.5 (500)
DN32	1 1/4"	57.5	-	34.5 (500)
DN40	1 1/2"	61	-	34.5 (500)
DN50	2"	70	-	34.5 (500)
DN65	2 1/2"	82	-	34.5 (500)
DN80	3"	89	-	34.5 (500)
DN100	4"	98	-	34.5 (500)
DN150	6"	76.2	-	-

Malleable Iron Pipe Fittings

529A

Long Extension Piece



Dimensions

Size		Dimensions	Max Working Pressure bar (psi)	
mm	in	A	UL	FM
DN8	1/4"	33		-
DN10	3/8"	35		-
DN15	1/2"	43	34.5 (500)	34.5 (500)
DN20	3/4"	48	34.5 (500)	34.5 (500)
DN25	1"	55	34.5 (500)	34.5 (500)
DN32	1 1/4"	60	34.5 (500)	34.5 (500)
DN40	1 1/2"	61.5	34.5 (500)	34.5 (500)
DN50	2"	68	34.5 (500)	34.5 (500)
DN65	2 1/2"	76	-	-
DN80	3"	83	-	-
DN100	4"	97	-	-

529X

Short Extension Piece



Dimensions

Size		Dimensions	Max Working Pressure bar (psi)	
mm	in	A	UL	FM
DN15	1/2"	32	34.5 (500)	34.5 (500)

1221

Side Outlet Elbow



Dimensions

Size		Dimensions	Max Working Pressure bar (psi)	
mm	in	A	UL	FM
DN15	1/2"	28	34.5 (500)	34.5 (500)
DN20	3/4"	33	34.5 (500)	34.5 (500)
DN25	1"	38	34.5 (500)	34.5 (500)
DN40	1 1/2"	50	34.5 (500)	-
DN50	2"	58	34.5 (500)	34.5 (500)

1223

Side Outlet Tee



Dimensions

Size		Dimensions	Max Working Pressure bar (psi)	
mm	in	A	UL	FM
DN15	1/2"	28	34.5 (500)	34.5 (500)
DN20	3/4"	33	34.5 (500)	34.5 (500)
DN25	1"	38	34.5 (500)	34.5 (500)
DN32	1 1/4"	45	-	-

Malleable Iron Pipe Fittings

1224

Side Outlet Cross

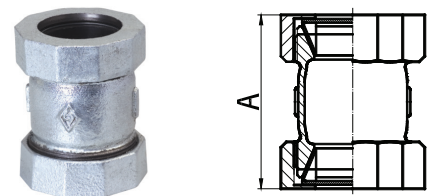


Dimensions

Size		Dimensions	Max Working Pressure bar (psi)	
mm	in	A	UL	FM
DN32	1 1/4"	45	-	-
DN40	1 1/2"	50	-	-

SCC

Short Compression Coupling

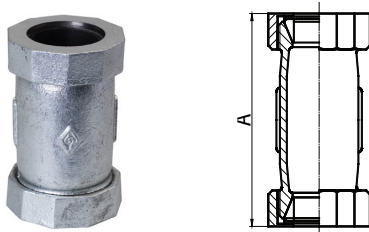


Dimensions

Size		Dimensions	Max Working Pressure bar (psi)	
mm	in	A	UL	FM
DN15	1/2"	62	-	-
DN20	3/4"	69	-	-
DN25	1"	73	-	-
DN32	1 1/4"	79	-	-
DN40	1 1/2"	79	-	-
DN50	2"	84	-	-
DN65	2 1/2"	100	-	-
DN80	3"	110	-	-

LCC

Long Compression Coupling

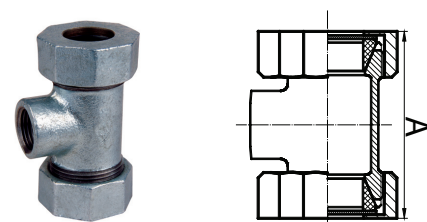


Dimensions

Size		Dimensions	Max Working Pressure bar (psi)	
mm	in	A	UL	FM
DN15	1/2"	93	-	-
DN20	3/4"	101	-	-
DN25	1"	109	-	-
DN32	1 1/4"	114	-	-
DN40	1 1/2"	118	-	-
DN50	2"	121	-	-
DN65	2 1/2"	137	-	-
DN80	3"	145	-	-
DN100	4"	155	-	-

TCC

Compression Tee



Dimensions

Size		Dimensions	Max Working Pressure bar (psi)	
mm	in	A	UL	FM
DN15	1/2"	80	-	-
DN20	3/4"	88	-	-