



## Grooved Y-Type Strainer Fig. 701



### General Description

Rapidrop Figure 701 Strainers filter out the dirt, rust, and other debris in the water flow protecting the valves and other equipment in the piping system.

All sizes are equipped with a grooved coupling which allows easy removal of the retainer cap and stainless steel screen for cleaning.

Rapidrop Figure 701 Strainer should be installed horizontally with the cap facing downwards with access to remove the basket/screen.

### Standard Screen

Sizes		Sieve No.	Hole Dia.	Free Flow Area (%)
Inch	mm		mm	%
2"~2.5"	DN 50~65	25	4	48
3"~4"	DN 80~100	19	5	59
5"	DN 125	14	6	63
6"~12"	DN 150~300	13	6.3	64

### Connections

Groove to ISO 6182/ AWWA C606

### Maximum Working Pressure

300PSI

### Temperature Range

0°-80°C

### Coating

Fusion Bonded Epoxy Coating

In accordance with ANSI / AWWA C550 or painting upon request

### Approvals

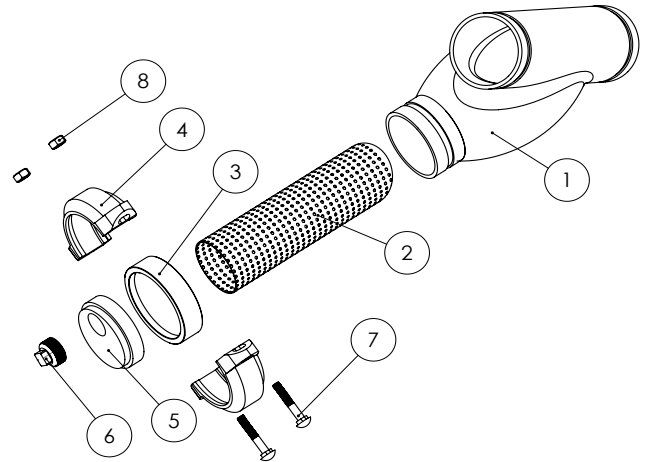
UL

# Grooved Y-Type Strainer

## Fig. 701

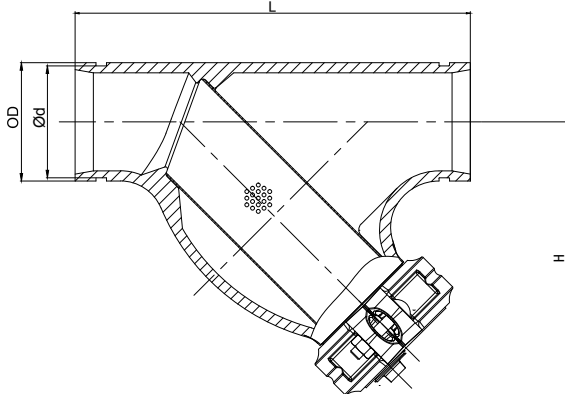
### Material Specification

No	Description	Material
1	Valve Body	Ductile Iron 65-45-12
2	Screen	Stainless Steel
3	Gasket	EPDM
4	Grooved Coupling	Ductile Iron 65-45-12
5	Cap	Ductile Iron 65-45-12
6	Drain Plug	Malleable Iron Galvanized
7	Bolts	Carbon Steel Zinc Plated
8	Nuts	Carbon Steel Zinc Plated



### Cleaning Process

1. Notify any authority having jurisdiction and all personnel who may be affected prior to commencing inspection.
2. Close water supply, isolate and drain the system.
3. Unscrew the *drain plug* (6) and drain the strainer.
4. Remove the *grooved coupling* (4), the *gasket* (3) and the *cap* (5).
5. Make sure the *screen* (2) is clean from dirt and rust.
6. Reassemble in reverse order.



### Sizes

Sizes		Dimensions (mm)				Weight (kg)	Product Ordering Code
Inch	mm	L	OD	d	H		
2"	DN 50	247.5	60.3	57.15	170	3.8	RD701YS050
2.5"	DN 65	273	73.0	69.09	185	6.2	RD701YS073
2.5"	DN 65	273	76.1	72.26	185	6.2	RD701YS065
3"	DN 80	298.5	88.9	84.94	207	9.2	RD701YS080
4"	DN 100	362	114.3	110.08	255	15.3	RD701YS100
5"	DN 125	419	139.7	135.48	286	21.8	RD701YS139
5"	DN 125	419	141.3	137.03	286	21.8	RD701YS125
6"	DN 150	470	165.1	160.90	340	32.7	RD701YS150
6"	DN 150	470	168.3	163.96	340	32.7	RD701YS168
8"	DN 200	609.5	219.1	214.40	420	70.9	RD701YS200
10"	DN 250	686	273.0	268.28	482	108.6	RD701YS250
12"	DN 300	762	323.9	318.29	580	159.5	RD701YS300

### Important Installation Information

- Rapidrop *Figure 701 strainer* must only be installed by a competent person in accordance with requirements of the local authority having jurisdiction. Deviations from these standards will invalidate warranty.
- It is the responsibility of the installing contractor to include a copy of this document in the sprinkler system installation, operating and maintenance manual.
- Alterations to Rapidrop products will void any warranty.
- *Figure 701 strainer* should be inspected and maintained during routine sprinkler system inspections by a competent person in accordance with national codes/requirements.
- Failure to follow these instructions could cause improper operation, resulting in personal injury and/or property damage.
- For further details and technical support please contact your Rapidrop sales representative.